

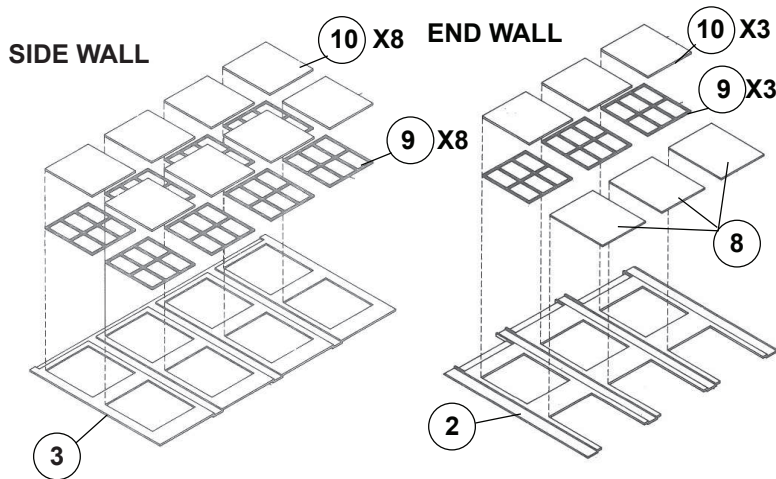


# HO Structure Kit CARSHOP 933-3040

Thanks for purchasing this Cornerstone Series® kit. All parts are molded in styrene, so use compatible paints and glues. Please take a few minutes to study the drawings prior to assembly.

Whether constructing the all-wood cars of the 1920's, or rebuilding the steel cars of today, this kit is perfect for any railroad. It is designed as a modular unit, to be expanded into a larger structure. With its large windows and overhead skylights, this kit is a natural for interior detailing. Most shops had a light duty (about 25 ton capacity) overhead crane. Support brackets are included in this kit, but the crane must be kitbashed. The girders and many other parts from the Overhead Traveling Crane (933 3102) are suitable, but a longer bridge portion is required.

For additional figures, vehicle and accessories to set the scene see your dealer, check out the latest Walthers HO Scale Model Railroad Reference book or visit our web site at [waltherscornerstone.com](http://waltherscornerstone.com) for more ideas.

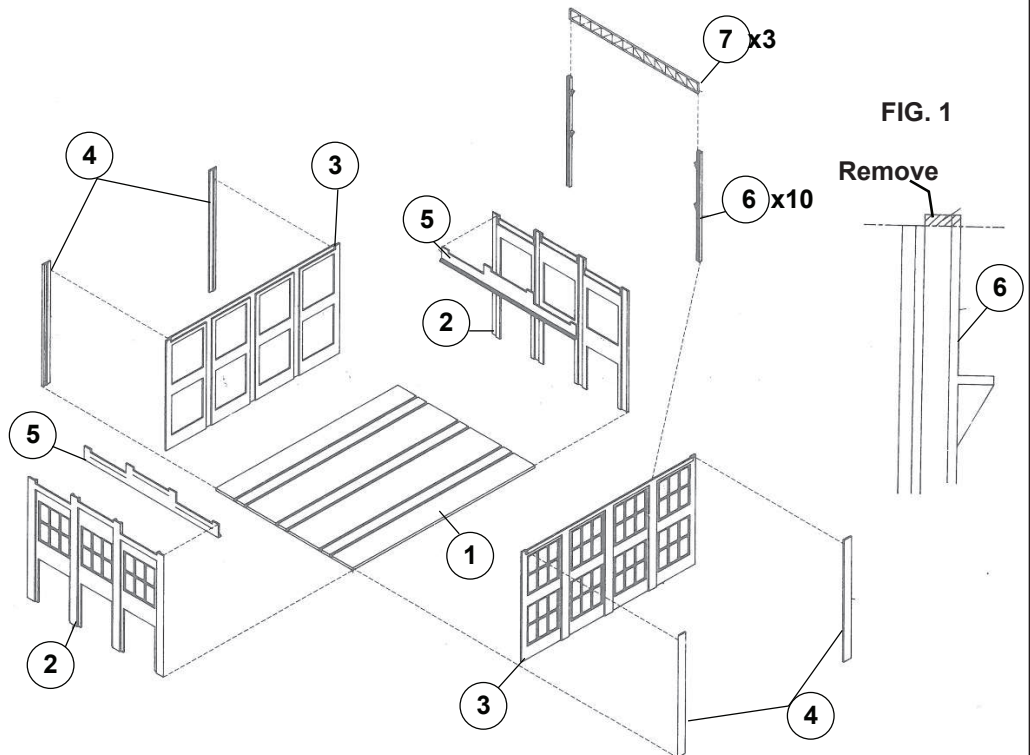


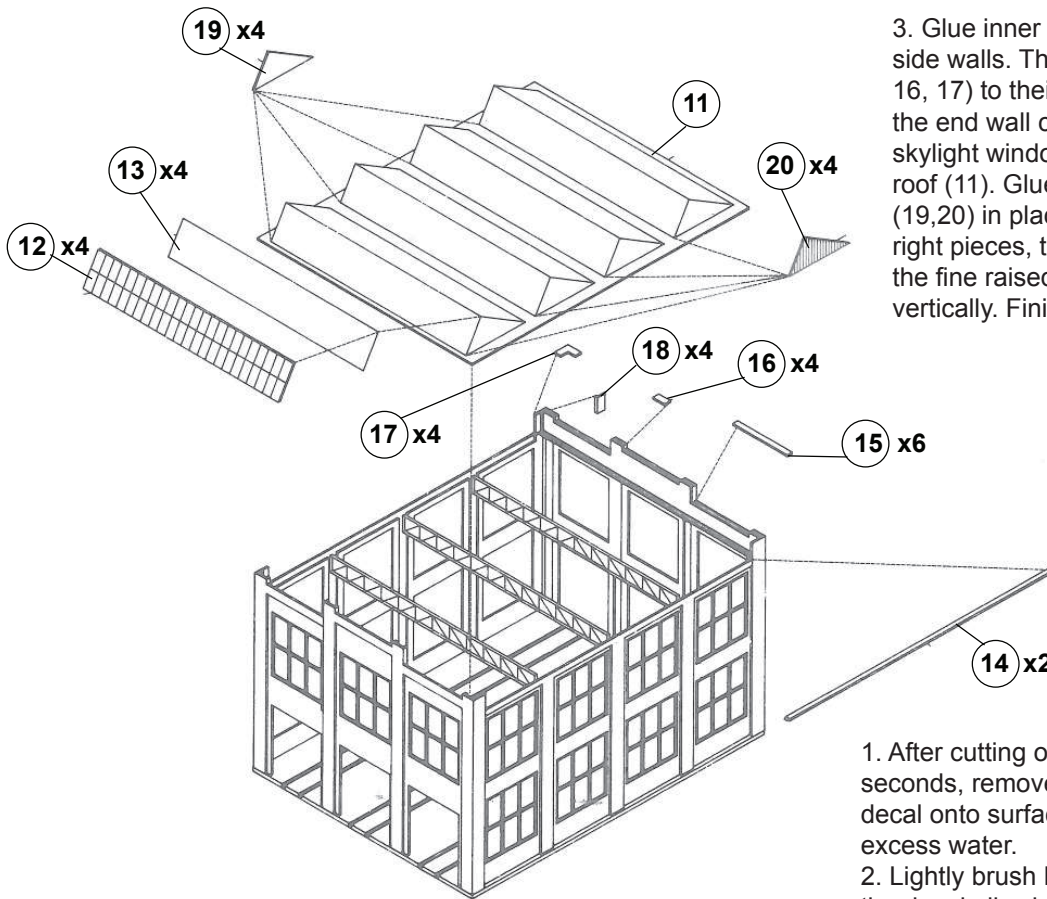
### READ FIRST

Before starting, decide on how big of a structure you want to build. Steps 1-3 instruct how to build the basic one kit building. Step 4 shows what modifications are needed to put multiple kits together. Plan accordingly.

1. Glue window frames (9) in openings in the end walls (2). Glue windows (10) in place. If you desire to have the doors in a closed position, glue them (8) in place. Next, glue frames (9) and windows (10) in place on the side walls (3).

2. First, glue end pilasters (4) to the side walls (3). Next, glue five support columns (6) to the inside of each end wall. NOTE: The support columns that go in the corners must have their tops removed (see fig. 1). Then, glue in the inner wall pieces (5) to backs of the end walls (2). Now, glue the walls to the base (1) and the trusses (7) to the tops of the middle three support columns. NOTE: There will be an extra truss left over.





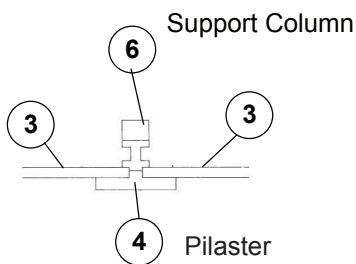
3. Glue inner corner pieces (18) to inside of side walls. Then, glue the end wall caps (15, 16, 17) to their respective places. Next, glue the end wall caps (14) in place. Now, glue skylight windows (13) into the openings in the roof (11). Glue skylight sides (19,20) in place. NOTE: There are left and right pieces, the thick ridge being on top and the fine raised lines facing outwards, running vertically. Finish by gluing the roof on.

### DECALING

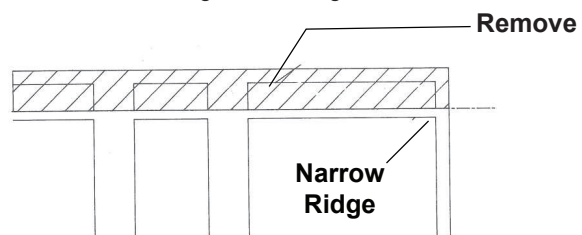
1. After cutting out the decal, dip in water for 10 seconds, remove and let stand for 1 minute. Slide decal onto surface, position and then blot off any excess water.
2. Lightly brush Micro Sol® on top. This will soften the decal allowing it to conform to irregular surfaces. DO NOT TOUCH DECAL while wet!
3. When the decal is thoroughly dry, check for any trapped air bubbles. Prick them with the point of a small pin or hobby knife blade and apply more Micro Sol®.

## TO BUILD LONGER SHOP

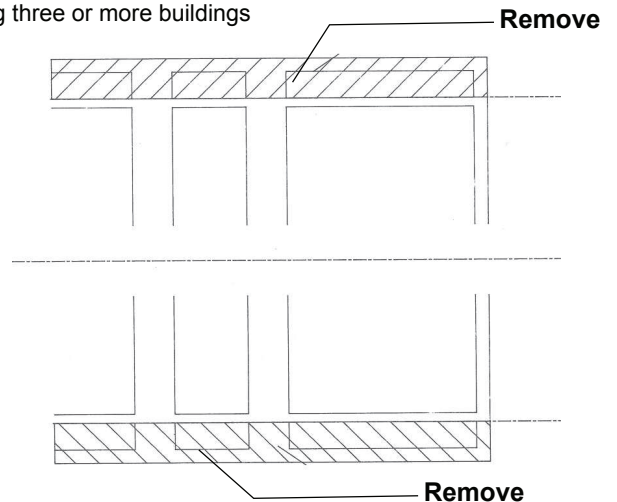
**FIG. 1**  
Top view



**FIG. 2**  
Bottom of bases when combining two buildings



**FIG. 3**  
Bottom of middle base(s) when combining three or more buildings



4. This building is designed to be made longer by combining two or more kits. The side wall can be expanded by using the splice pilaster (4) between two wall (3) sections and gluing the support column (6) to the back of the walls - fig. 1. To accommodate the new wall size, the base must be modified. For splicing two buildings together, you must cut off one side of each base (to the outside of the narrow ridge underneath) as shown in fig. 2, and then glue the modified bases together. For more than two buildings, the middle base(s) must have both ends removed - fig. 3 - in addition to the end bases having one end removed, before gluing all together.