



HO Structure Kit

ALLIED RAIL REBUILDERS

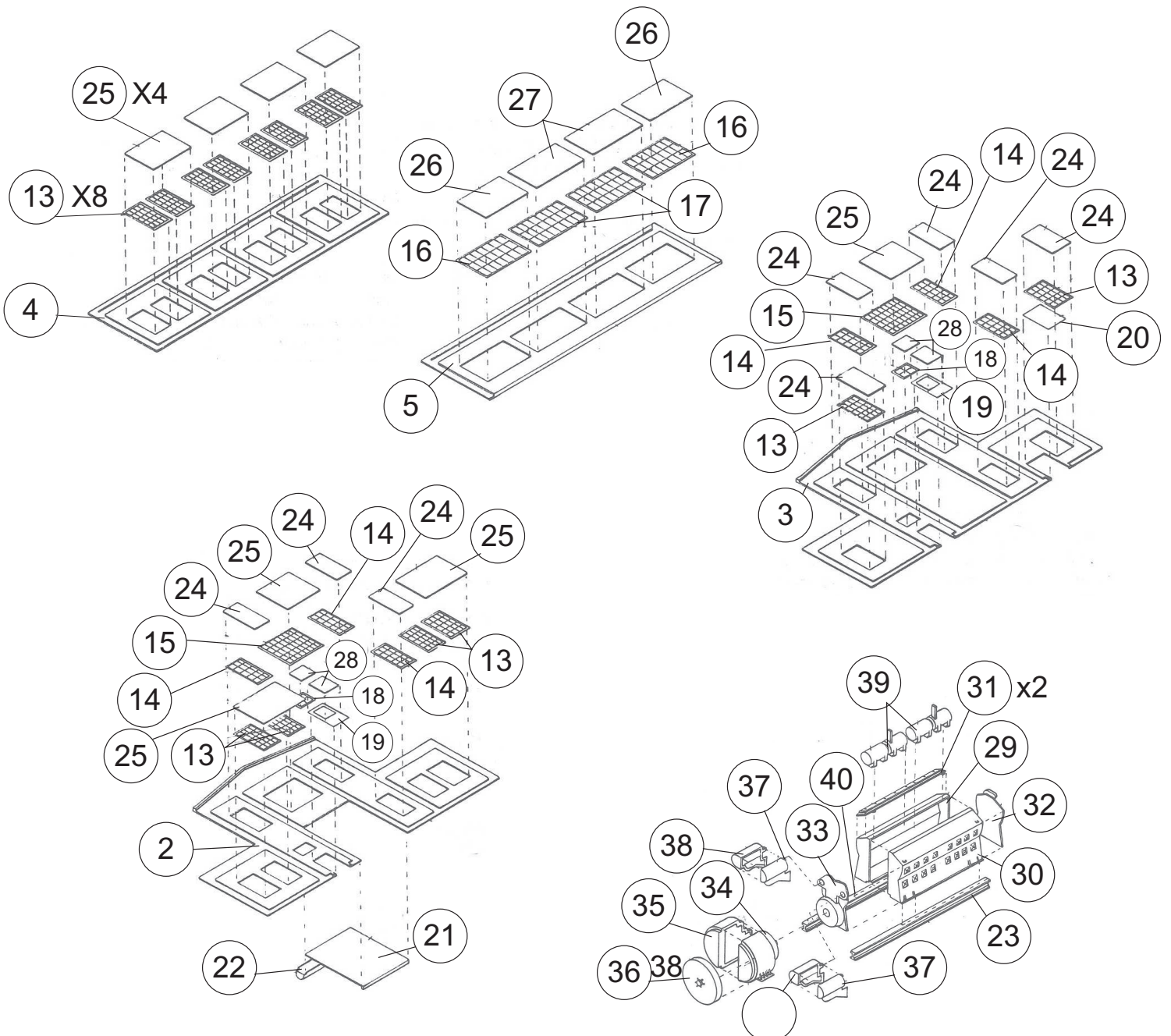
933-3211

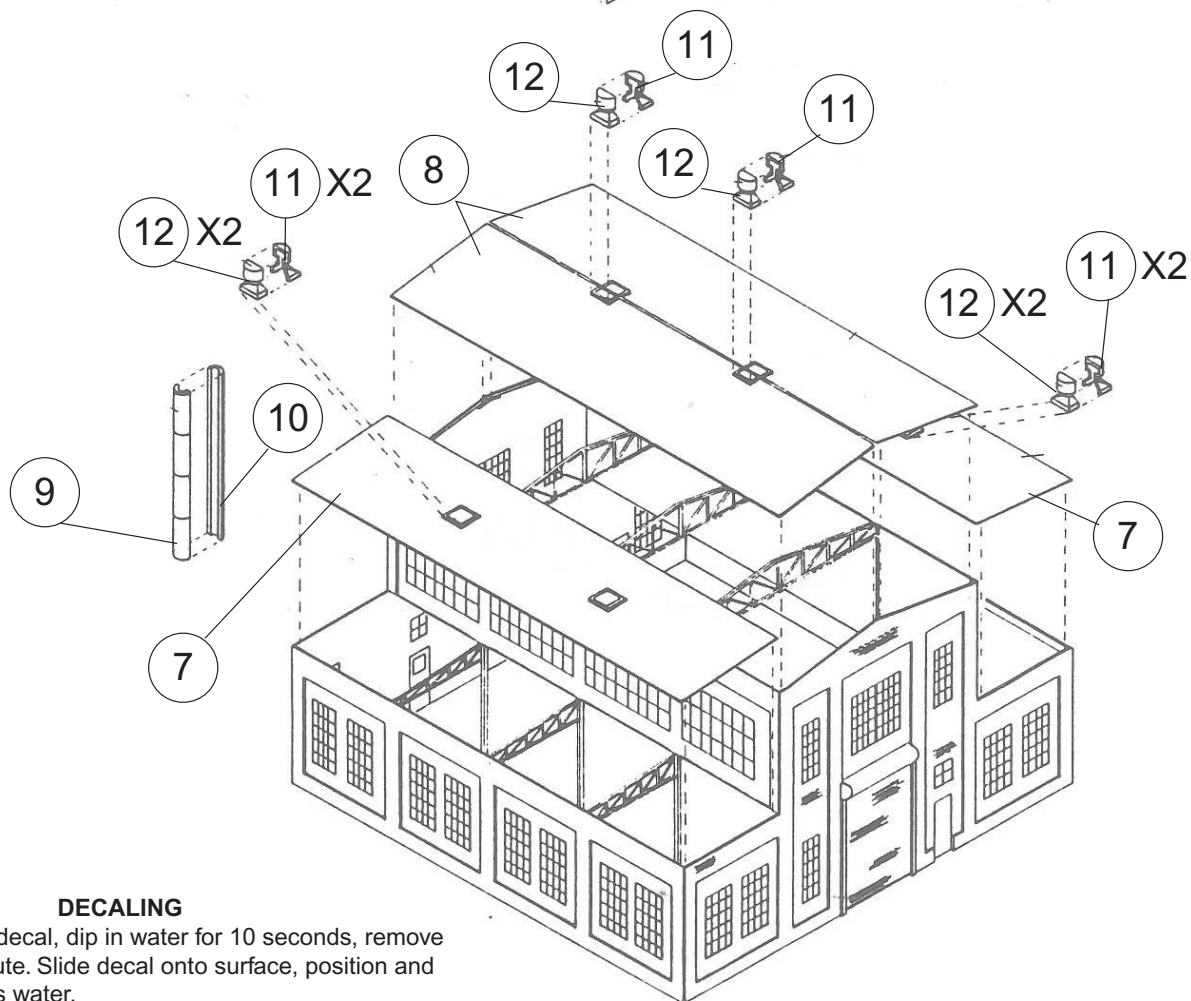
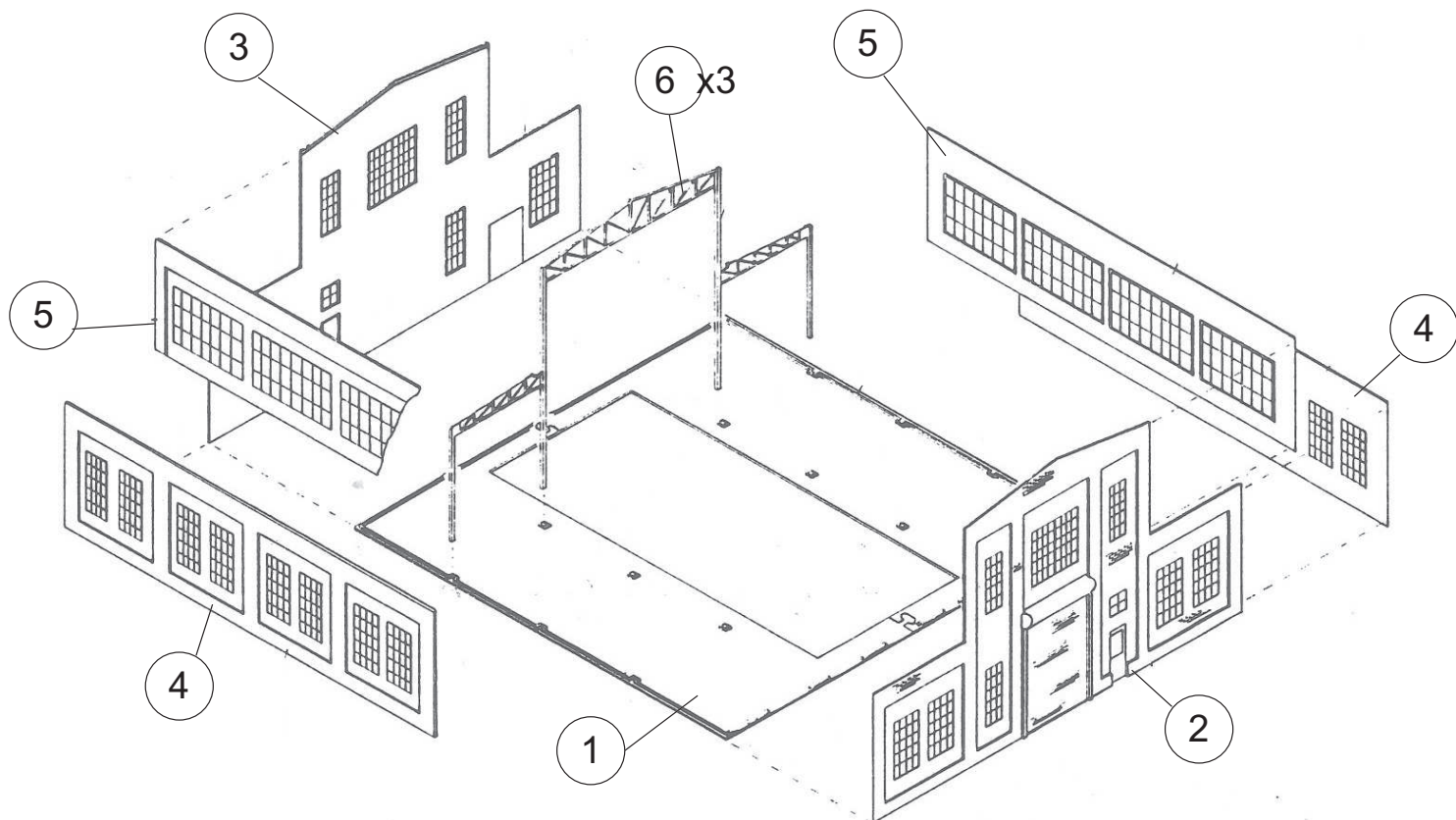
Thanks for purchasing this Cornerstone Series® kit. Please read all instructions and study the drawings before starting. All parts are styrene plastic, so use compatible glue. If you wish to decorate your model, use paints for plastic models. With appropriate details and signs, your finished model fits almost any era.

Many rebuilders started operations in the late 70's, when large railroads began trading in older diesels on new power. These locomotives were often in operating condition, and since so many were available, prices plummeted. The glut of used equipment made it possible to buy the rebuild locomotives for a fraction of the cost of new motive power. Rebuilding services acquired the locomotives, overhauled them and sold them to short lines as well as some larger roads. Some created rebuilt locomotive fleets which could be leased by a line which found it short on motive power.

Allied Rail Rebuilders can be used in many different ways. As a rebuilding shop, you can showcase your collection of cars and locomotives from various railroads. The EMD "567" Prime Mover included in the kit can be used as an interior detail, or loaded on a GSC Flat Car for delivery to an off-line customer.

See your local hobby dealer, Walthers Latest N&Z Scale Reference book or visit our Web site at www.waltherscornerstone.com for additional accessories to complete your new scene.





DECALING

1. After cutting out the decal, dip in water for 10 seconds, remove and let stand for 1 minute. Slide decal onto surface, position and then blot off any excess water.
2. Lightly brush Micro Sol® on top. This will soften the decal allowing it to conform to irregular surfaces. DO NOT TOUCH DECAL while wet!
3. When the decal is thoroughly dry, check for any trapped air bubbles. Prick them with the point of a small pin or hobby knife blade and apply more Micro Sol®.