



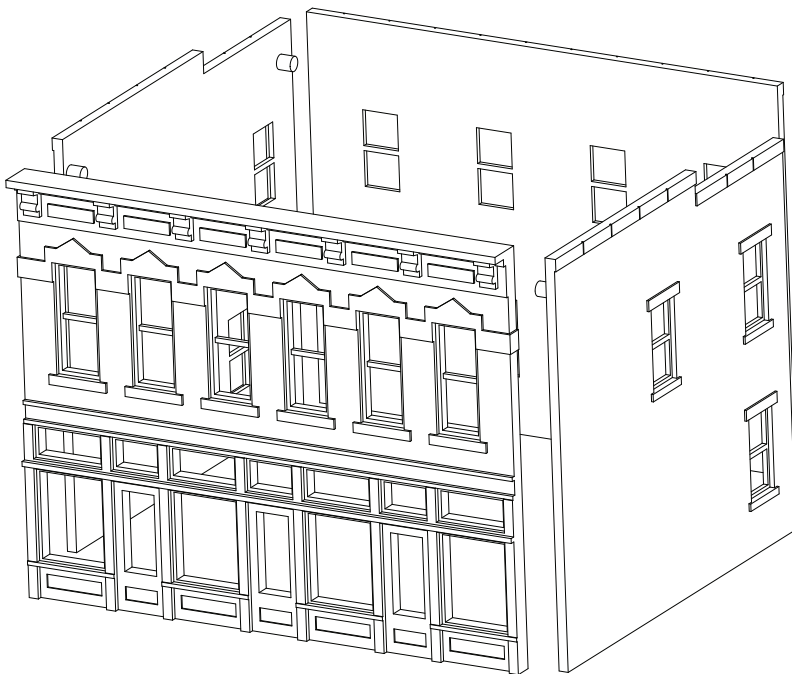
# HO Scale Structure Kit

## JIM'S RED OWL FOODS

# 933-3472

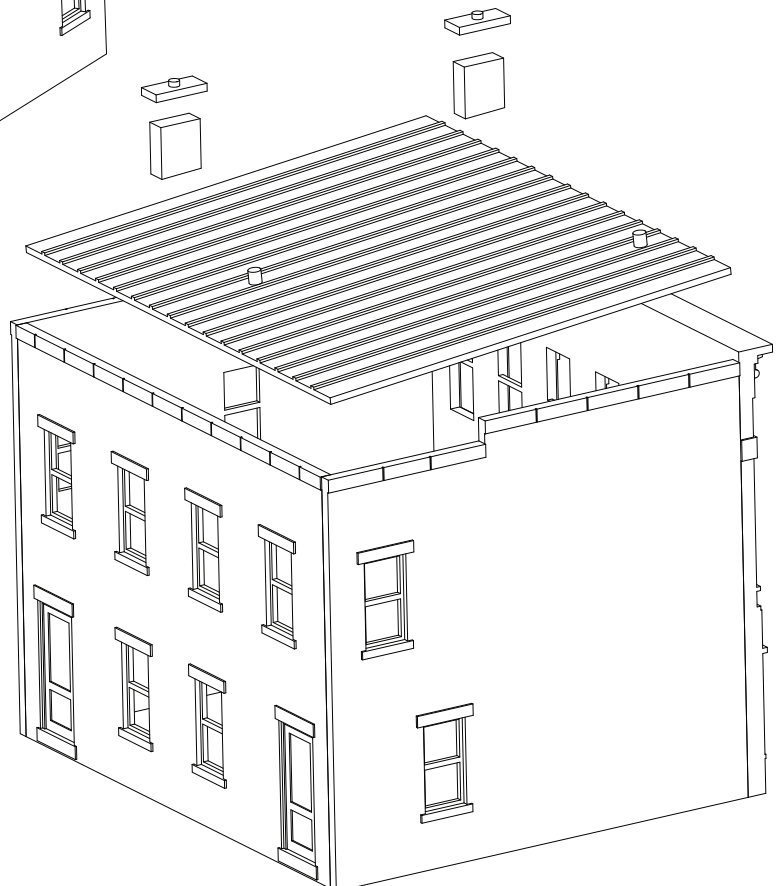
Thanks for purchasing this Cornerstone Series® kit. Please read all instructions and study the drawings before starting. All parts are styrene plastic, so use compatible glue. If you wish to decorate your model, use paints for plastic models. With appropriate details and signs, your finished model fits almost any era.

Almost from the beginning, American's have eagerly sought to improve their diets with processed and specialty foods. With origins in frontier trading posts, grocery stores once offered a wide selection of dry goods and staples such as salt, flour and sugar along with canned and commercially prepared foods sold nationwide. Many of these independent grocers became part of national "chains" in the 1920s (including Red Owl, which was founded in Minnesota in 1922) and 30s, with expanded advertising and "house brands" to compete with nationally known products. Following WWII, the supermarket became popular in suburban areas, and downtown grocery stores followed suit, adding perishables such as meat, dairy and fruits, once available only at specialty stores, and later carrying ethnic foods. In many cities with big populations and limited retail space, the storefront grocery is still the main place for food purchases today.



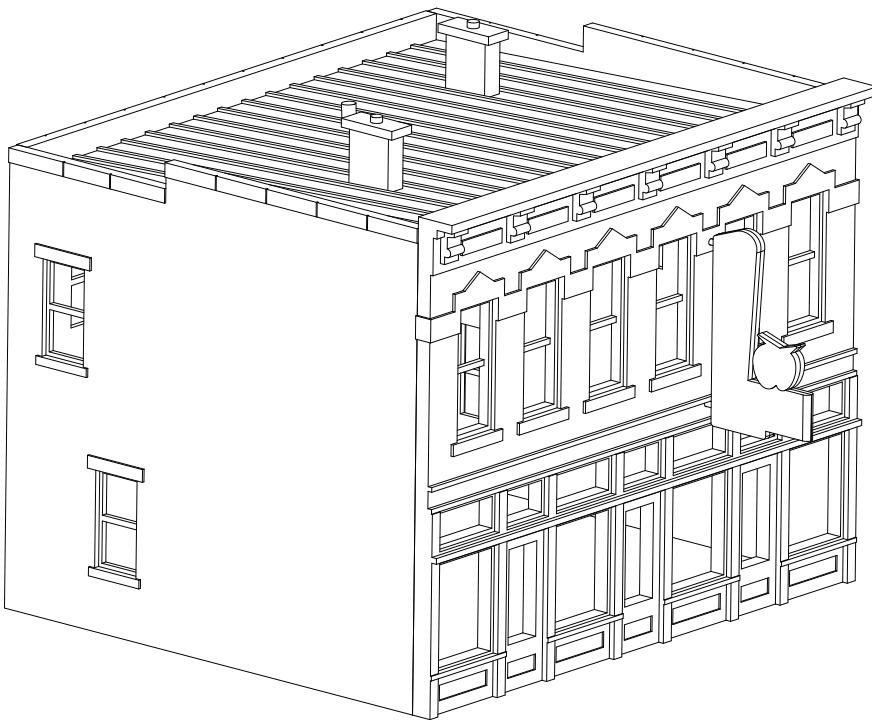
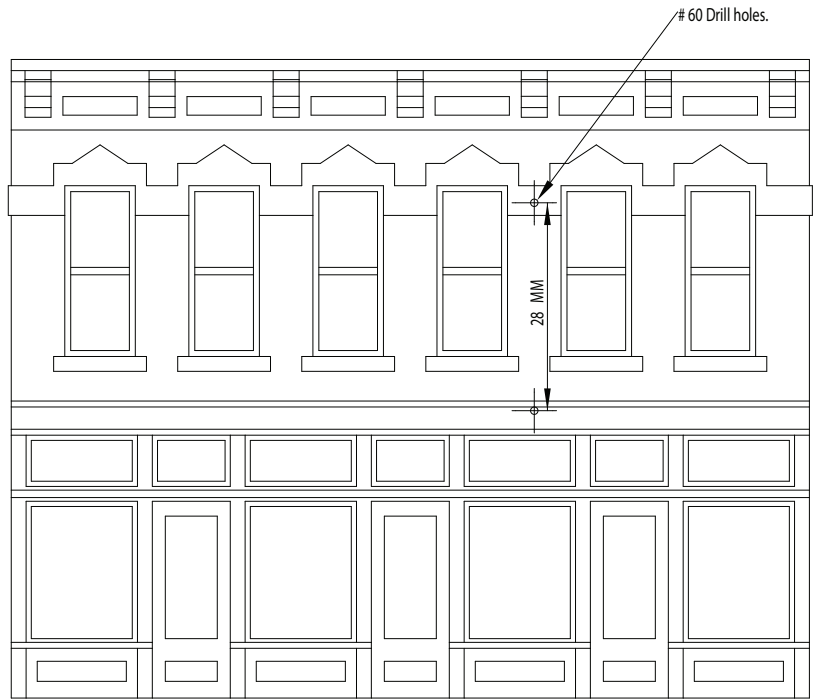
1) Begin assembly by squaring off the front edge of both side walls, and both edges of the back wall using a large file or sandpaper. Note that the side walls fit behind the front wall, and the rear wall fits between the side walls. Glue the walls together and set aside to dry.

2) Test fit the roof, and make any adjustments to obtain a good fit. Do not glue the roof at this time.



3) The acetate windows should be added now. Cut the acetate slightly larger than the window openings, and glue in place with a water-based contact cement. To add the interior graphics, trim them from the paper sheet using a sharp hobby knife and straightedge, or scissors. For a more realistic appearance, the interior should be set back a bit from the front windows. Curtains and other window treatments can be applied directly to the back of windows using a quality tape. The roof may now be glued in place. Add your choice of single or double-stack chimneys as shown, or wherever you wish.

4) The Hanging Store Sign, and painted wall sign are applied last. Use the drill template to locate the hanging sign. Test fit, and adjust, but do not glue into position! Decorate both sides of the sign, and the left side wall of the building with the water-slide decals. Apply a decal setting solution to make the wall sign settle into the brick for a painted-on effect. When the Hanging Store Sign is dry, it can be glued to the front of the building.



5) As an added bonus, additional water-slide decals are provided to decorate your choice of Tractor/Trailer up to 53' long and a painting guide is provided to aid decoration.

### Applying Decals

1. Cut out the decal and dip in water for 10 seconds. Remove decal from water and let stand for 1 minute. Slide decal onto surface and into position. Blot off any excess water.
2. Lightly brush Micro Sol® on top of the decal. This will soften the decal allowing it to conform to any irregular surfaces. DO NOT TOUCH DECAL while wet!
3. When the decal is thoroughly dry, check for any trapped air bubbles. Prick them with the point of a small pin or hobby knife blade and apply more Micro Sol®.