



# HO Structure Kit

## ASHMORE HOTEL

933-3764

Thanks for purchasing this Cornerstone kit. All parts are made of styrene plastic, so use compatible glue and paint to assemble and finish your model. PLEASE READ all of the instructions and study the drawings before starting construction as this kit can be assembled in several different ways, and there will be some left over parts, which you can keep for future projects or discard.

For more ideas for detailing your scene, contact your local dealer, check out the latest Walthers HO Scale Model Railroad Reference Book or visit our Web site at [waltherscornerstone.com](http://waltherscornerstone.com).

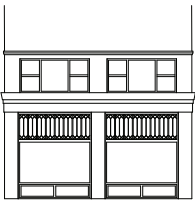
Part one covers basic assembly — please note that parts are provided to model the ground floor as it would appear during the 1900s, 1950s and modern eras as shown below: these are suggestions and parts can be mixed or matched as desired.

In later sections, we'll show you how you can make a shorter, taller, wider or longer building, as well as a low relief background structure, if desired.

### 1900s Era First Floor



Front Wall #1



Left Wall #2



Right Wall #3

#### 1900's Era Parts



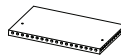
17 x (1)



Clear Glass  
29 x (8)



17-A x (1)



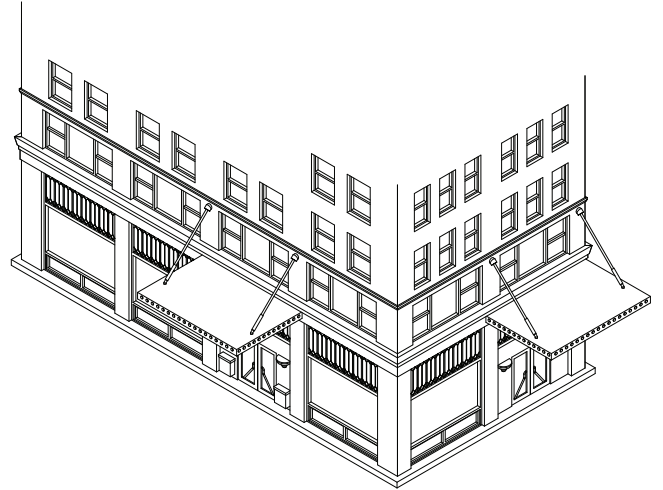
48 x (2)



14 x (6)



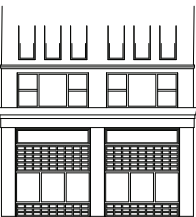
47 x (4)



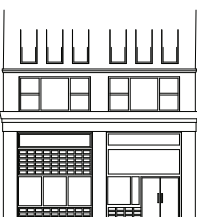
### 1950s Era First Floor



Front Wall #1



Left Wall #2



Right Wall #3

#### 1950's Era Parts



12 x (6)



19



15

#### Clear Glass Parts



53



29 x (7)



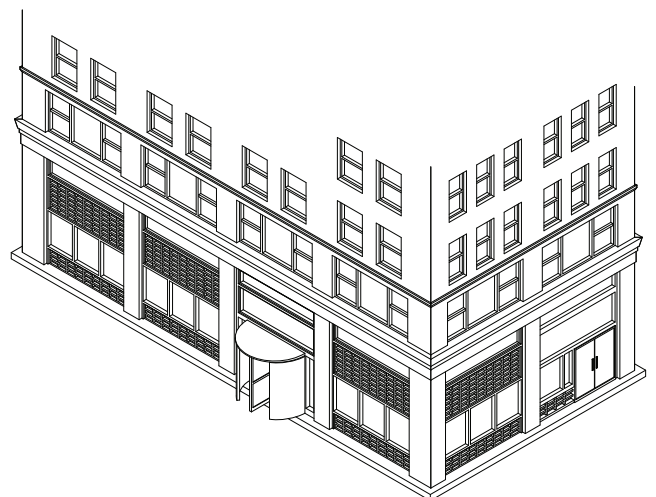
50



51

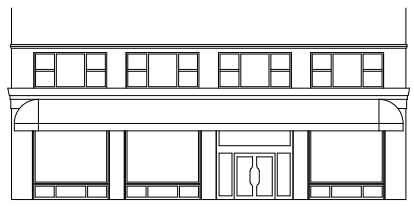
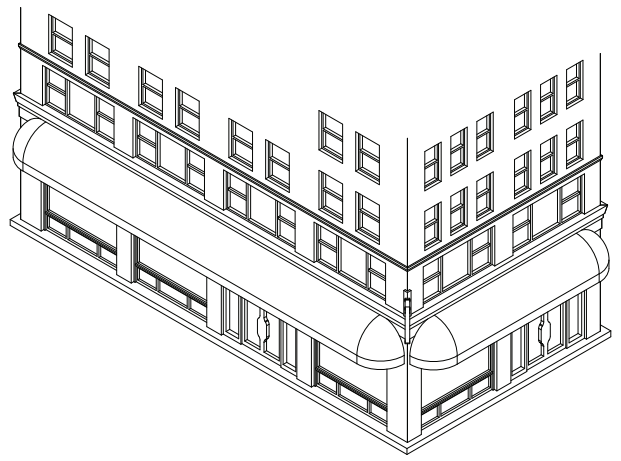
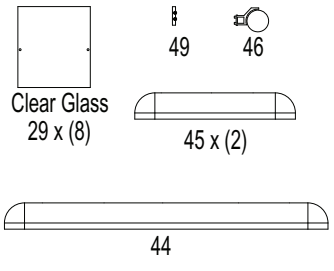
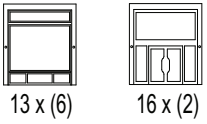


52



# Modern Era First Floor

## Modern Era Parts



Front Wall # 1



Left Wall # 2

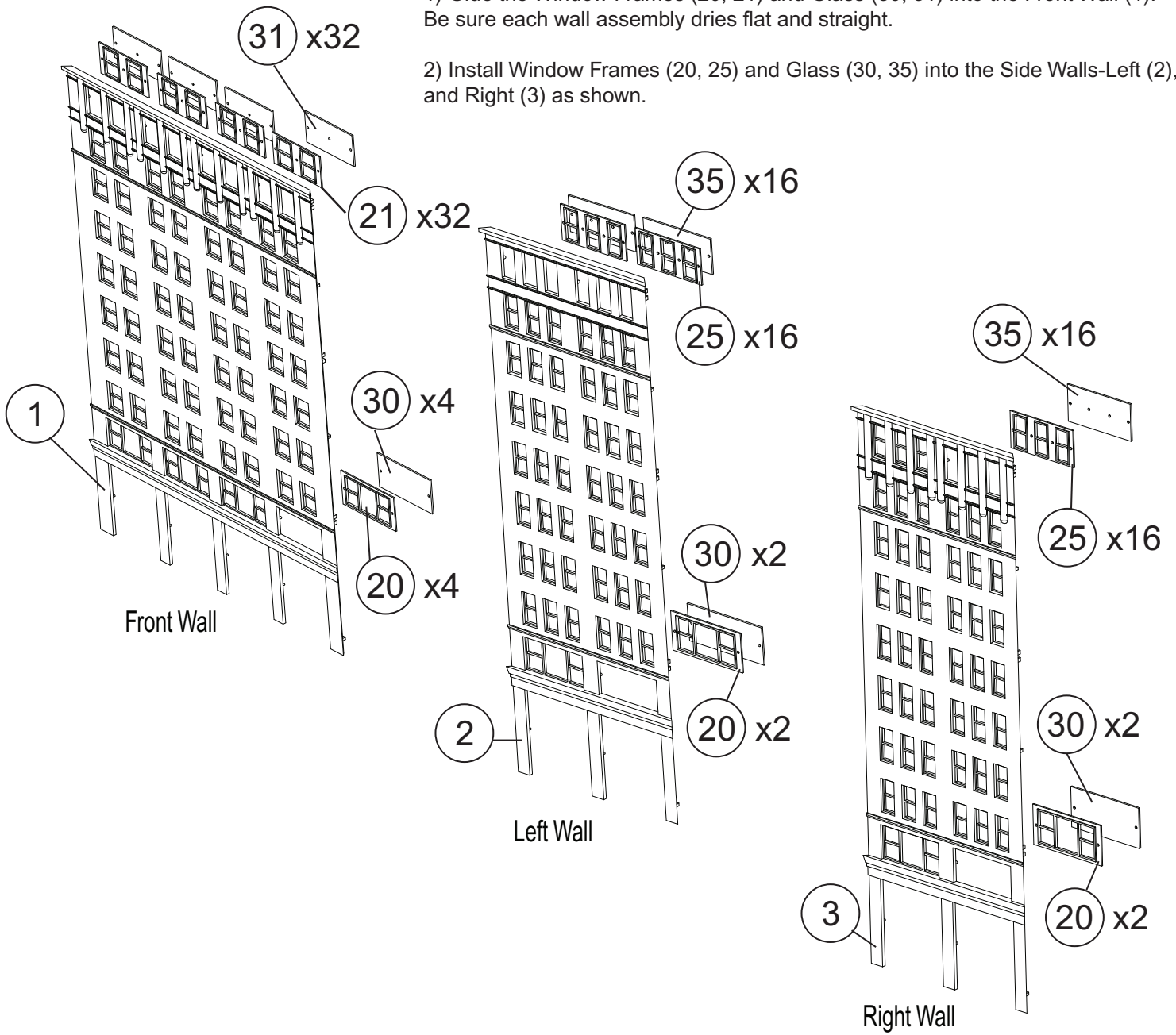


Right Wall # 3

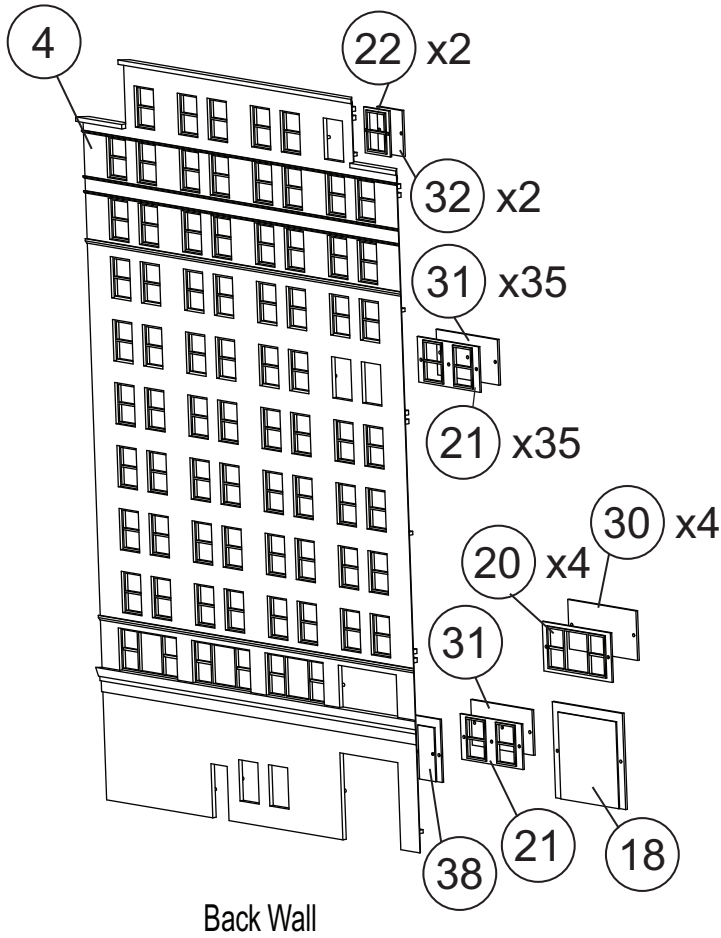
## General Assembly

1) Glue the Window Frames (20, 21) and Glass (30, 31) into the Front Wall (1). Be sure each wall assembly dries flat and straight.

2) Install Window Frames (20, 25) and Glass (30, 35) into the Side Walls-Left (2), and Right (3) as shown.

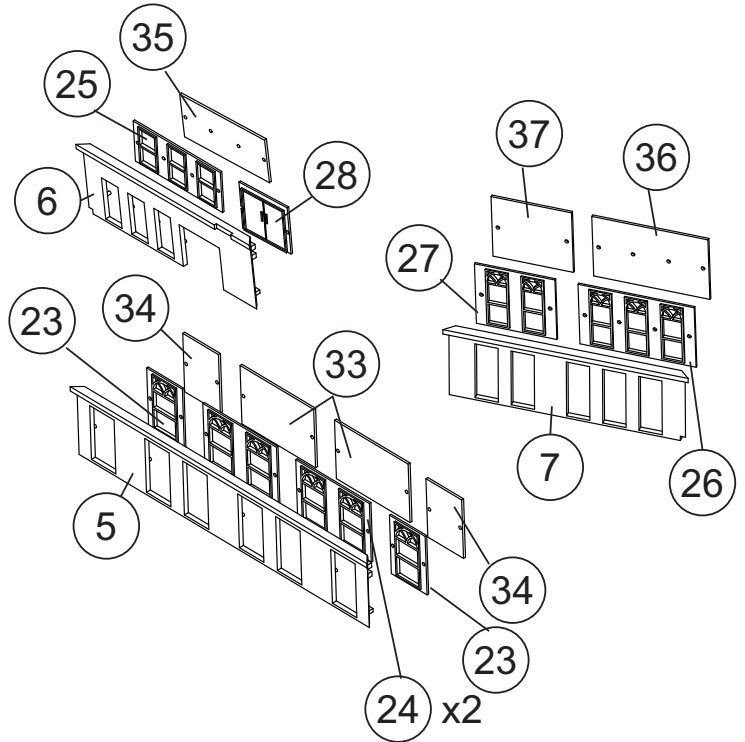


# General Assembly

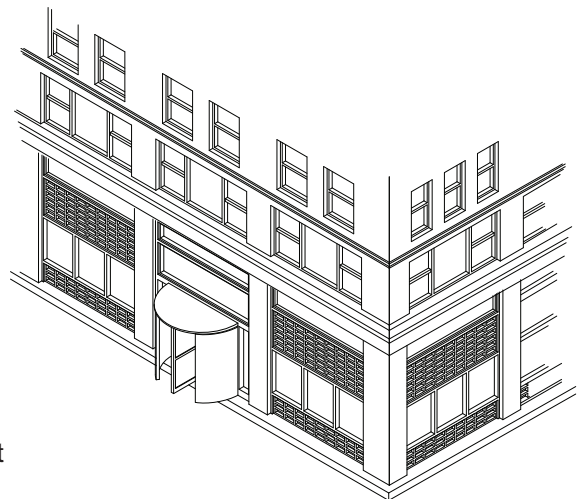
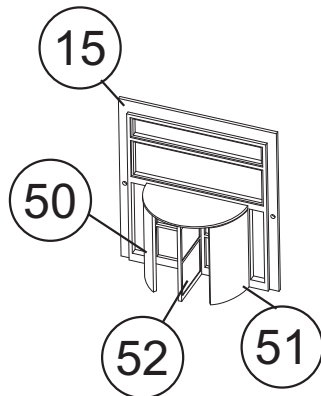


3) Add Doors (18, 38), Window Frames (20, 21, 22), and Glass (30, 31, 32) into the Rear Wall (4).

4) Glue Window Frames (23, 24, 25, 26, 27), Door (28), and Clear Glass (33, 34, 35, 36, 37) to Walls (5, 6, 7) as illustrated.



5) Install the Era-Specific Window and Door Frames that you selected into the ground floor openings - on the back side of Walls 1, 2 & 3. If using the Revolving Door Frame (15), drill out the nine indents on the back using a #68 drill bit. Glue the Curved Glass (50, 51) and the Door (52) to the front of the Frame, and install into the model.



6) Add the printed interior scenes, removing only one at a time to keep track of their location; each has a description to aid in placement. Test fit and trim as needed for the best fit, then secure in place with a quality drafting or masking tape. Add all interior scenes before proceeding.

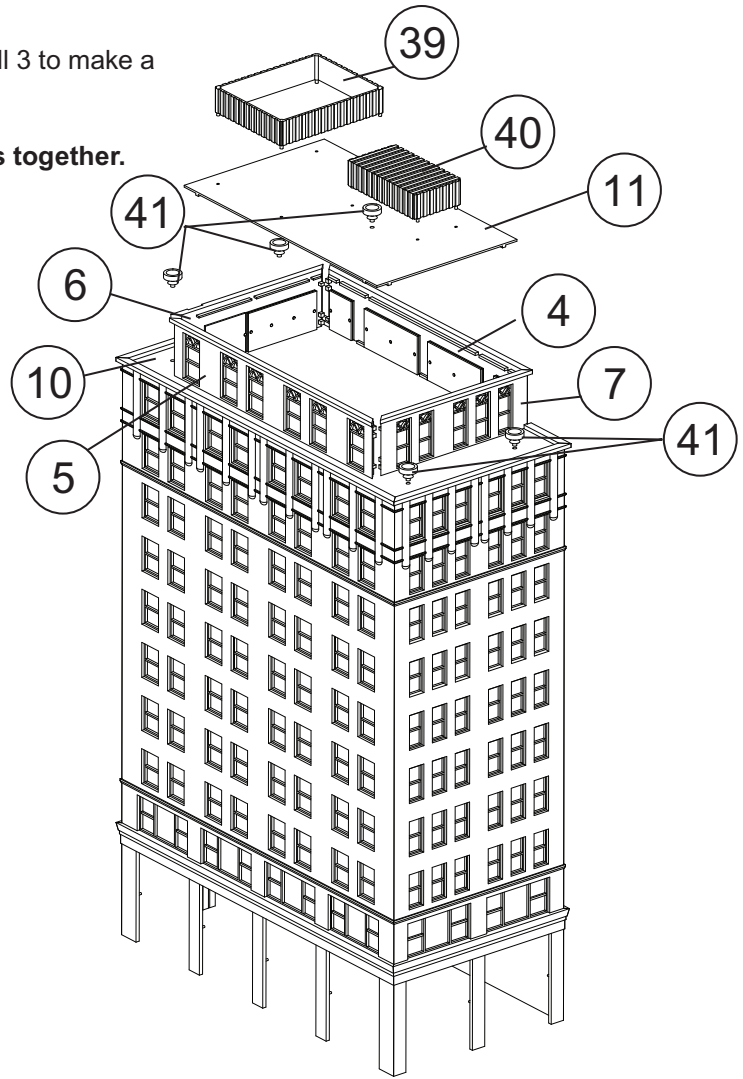
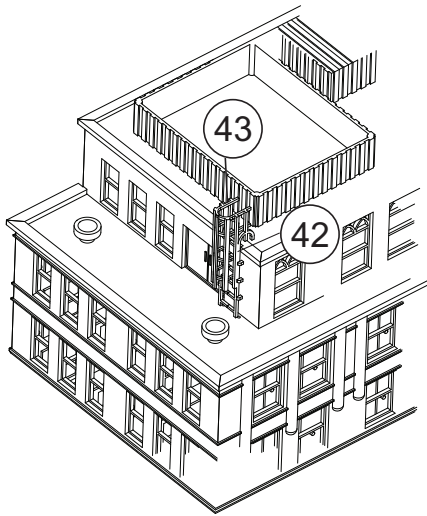
# General Assembly

7) Before beginning this step, determine where you'll install Wall 3 to make a "Left-" or "Right-Corner" structure.

**Read the section on awning installation before gluing walls together.**

Glue Wall Sections (1, 2, 3, 4), Base (9) and Lower Roof (10) together, making sure the assembly is straight and square. When dry, glue Walls (5, 6, 7) together and to Lower Roof (10). Add the Upper Roof (10), Vents (41) and View Blocks (39, 40).

8) Finish by gluing Caged Safety Ladder halves (42, 43) together, and to Wall 6 as indicated. Holes in Roof (10) aid placement. Sign (46) and Corner Bracket (49) can be added where desired.



# Awning Installation

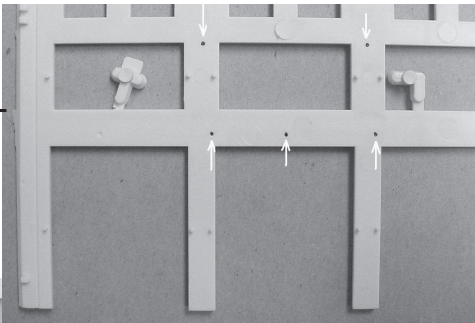
On a standard model, awnings can be installed on any wall, but are intended for Walls 1, 2 and 3 using the indents as shown in the accompanying photos. Use a #56 drill bit to open each indent.

**CAUTION – If you are building a longer or wider structure and plan to use the Cloth Awnings, do not drill out any indents as the modifications for those variants make drill locations obsolete. See the appropriate section for more information.**

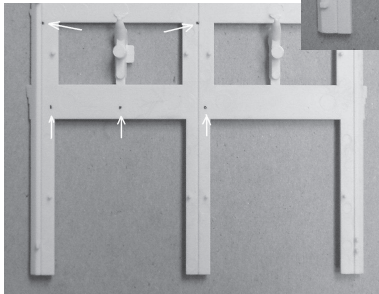
For Vintage scenes (standard model construction), drill out holes shown in photo below. Glue decorative awning (48) into the holes first, then add the supports struts (47). For locations other than stock use the drill template provided.

## VINTAGE DRILL POINTS

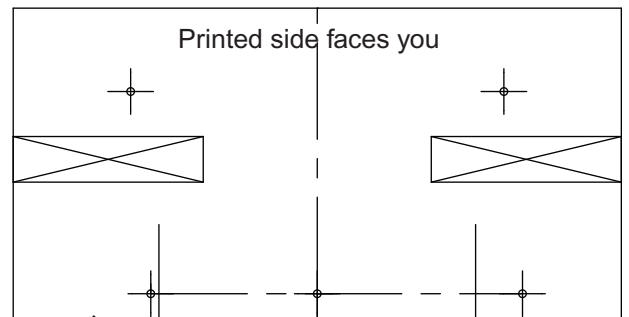
Front Wall #1 Drill Points



Side Wall #3 Drill Points



## TEMPLATE FOR DRILLING VINTAGE AWNINGS



Bottom Edge

Align with window edges

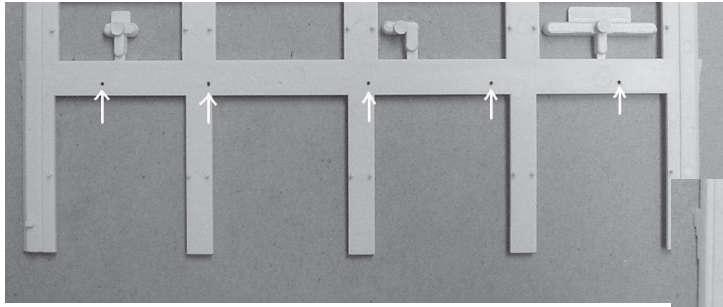
Cut out Template. Remove areas marked with an "X" and lay on back side of wall. Bottom edge is flush with top edge of opening for ground floor windows. Align vertical marks with window opening edges. Mark hole locations and drill out with #56 drill bit.



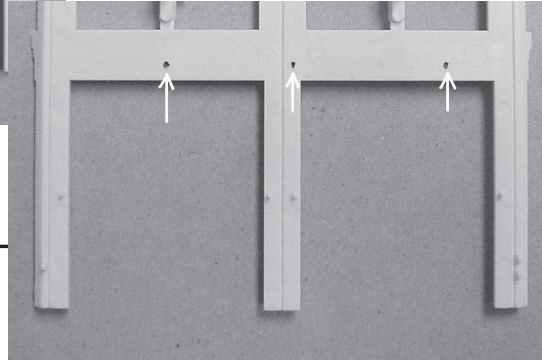
# Awning Installation-Modern

For Modern scenes (standard model construction), glue the Cloth Awnings (44, 45) into the drilled holes.

## MODERN DRILL POINTS



Front Wall #1 Drill Points



Side Wall #3 Drill Points

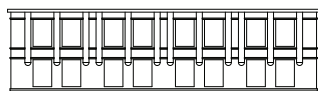
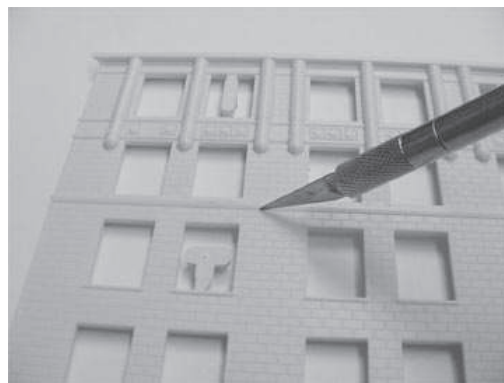
## SHORTER STRUCTURE



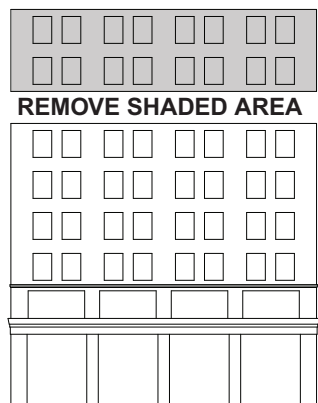
1) Cut wall sections using a fresh, sharp knife blade — carefully score the mortar joint under the concrete belt rail on Walls 1-4. You can remove as many floors as needed, simply cut two blocks above or below any window as shown in the photo.

When cutting, take your time and make several light cuts. Don't cut all the way through — carefully “snap” the wall sections apart and discard the unused portion.

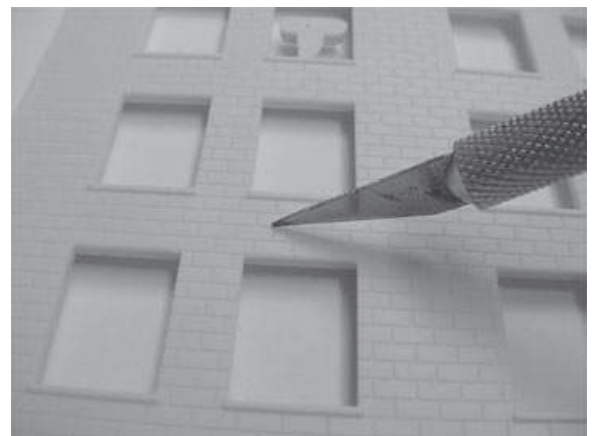
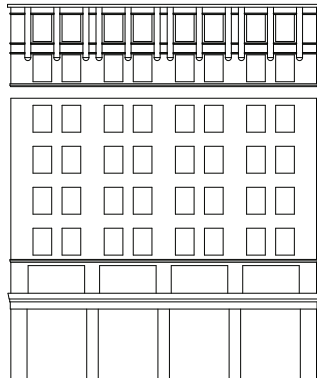
2) Test fit the parts and use a sanding block to true up the snapped edges, When satisfied with the fit, glue the sections together, making sure each dries flat and straight. Turn to Standard Assembly to finish the kit.



**REMOVE SHADED AREA**



**GLUE BACK TOGETHER**



# TALLER STRUCTURE – Requires 2 or More Kits, Each Sold Separately

Refer to the instructions under SHORTER STRUCTURE for the proper ways to cut and sand wall sections.

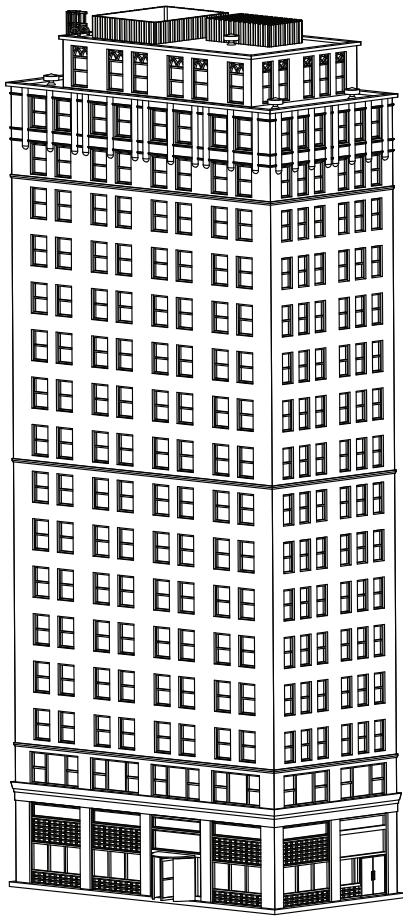
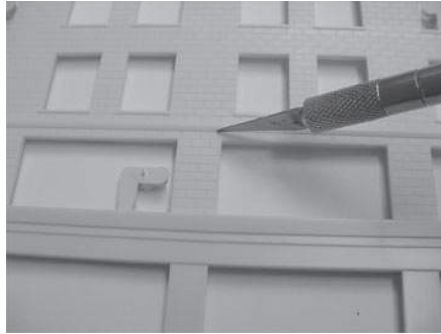
1) Mark the back of the Walls from your first kit with a permanent marker as KIT #1, then do the same for each subsequent set of Walls (KIT #2, KIT #3 etc.) to properly identify parts for the cutting operation.

2) KIT #1 Walls become the upper half of the building; score the mortar joint immediately below the belt rail between the second and third floors as shown in the photo, and snap apart. Do this for Walls 1-4.

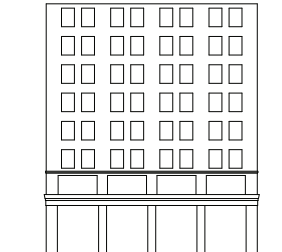
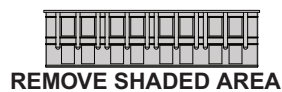
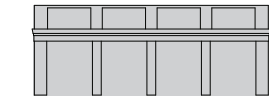
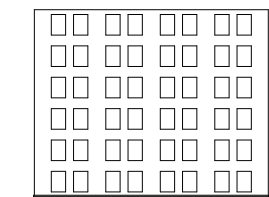
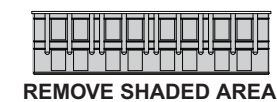
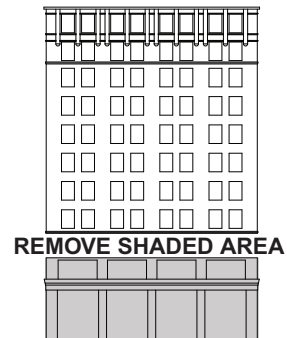
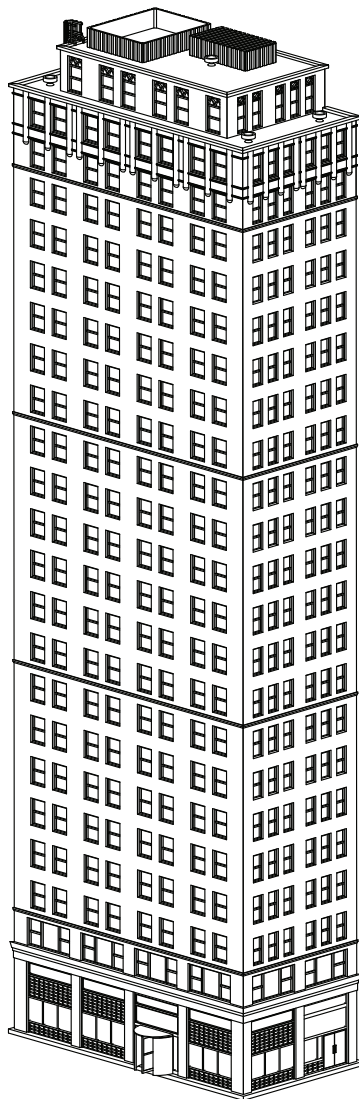
3) KIT #2 Walls become the lower half of the building; score the mortar joint immediately below the belt rail between the eighth and ninth floors as shown in the photo on the previous page, and snap apart. Do this for Walls 1-4. NOTE: You can also remove one or more floors if needed following Step 1 under SHORTER STRUCTURE.

4) If using three or more kits, walls from KIT #3, KIT #4 etc. must have the tops and bottoms removed following steps two and three above for Walls 1-4. These parts will be installed between the upper and lower halves.

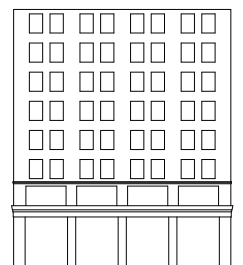
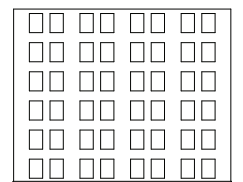
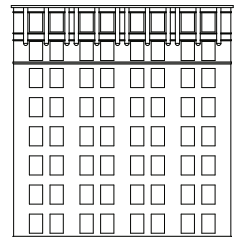
## 2 Kit Construction



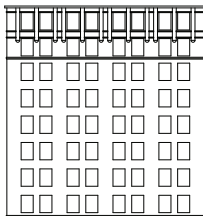
## 3 or More Kit Construction



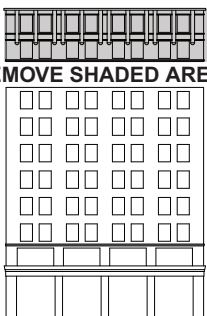
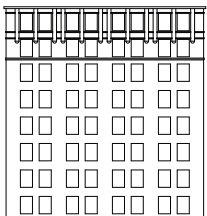
GLUE BACK TOGETHER



GLUE BACK TOGETHER



REMOVE SHADED AREA



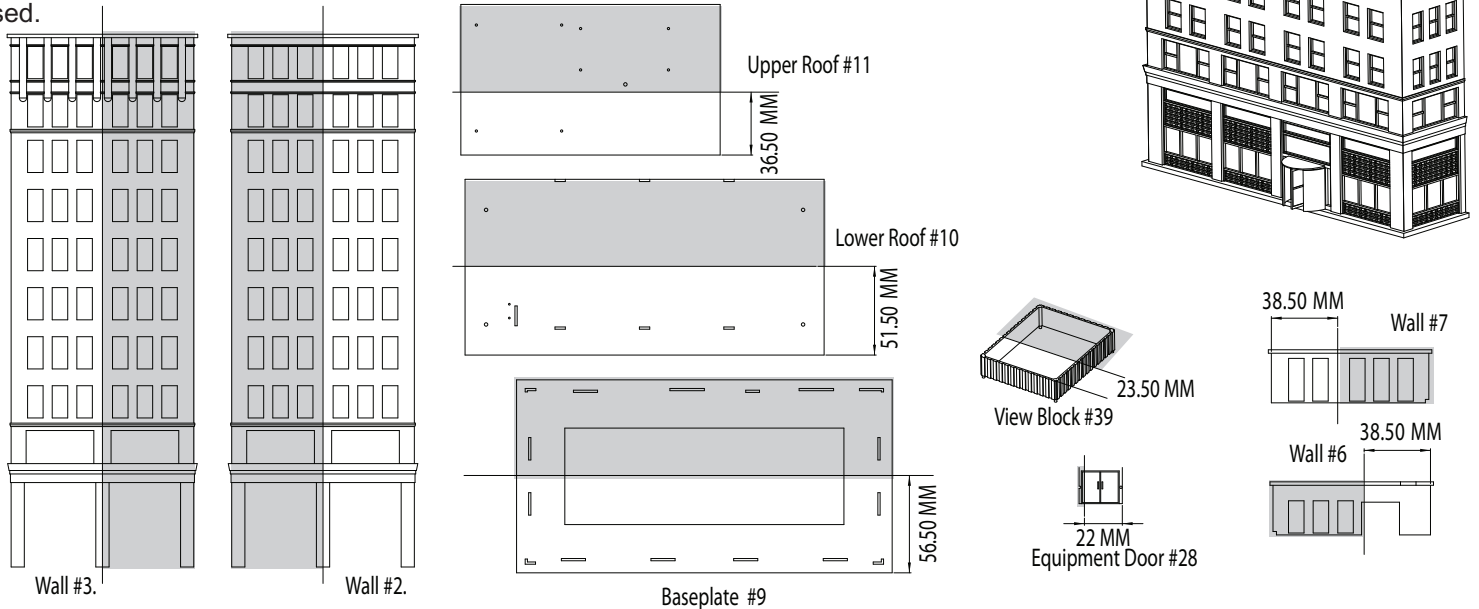
# LOW RELIEF BACKGROUND STRUCTURE

Refer to the instructions under SHORTER STRUCTURE for the proper ways to cut and sand wall sections.

1) Score the middle groove on the back of Walls 2 & 3; as these sections are thicker and have more surface detail, score these parts fairly deeply to prevent damage when snapped. Remove the shaded parts based on the illustrations below.

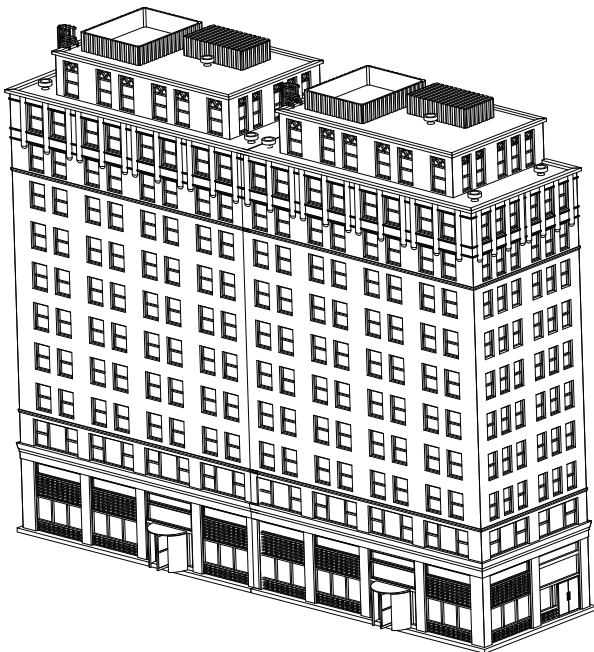
2) Trim the remaining parts to fit — measure carefully and cut squarely as no cut lines are provided. Test fit pieces frequently to check the fit and finish, and true up the snapped edges.

3) Follow the Standard Assembly steps to complete the model, but most of the parts will not be used.



# LONGER STRUCTURE — Requires 2 or More Kits, Each Sold Separately

Refer to the instructions under SHORTER STRUCTURE for the proper ways to cut and sand wall sections.



See Illustrations on following page

1) Mark the back of the Walls from your first kit with a permanent marker as KIT #1, then do the same for each subsequent set of Walls (KIT #2, KIT #3 etc.) to properly identify parts for the cutting operation.

2) Score the edgegroove on the back of Walls 1 & 4; as these sections are thicker and have more surface detail, score these parts fairly deeply to prevent damage when snapped.

3) Test fit the parts and use a sanding block to true up the snapped edges. When satisfied with the fit, glue the sections together, making sure each dries flat and straight.

4) The Lower Roof (10) is keyed to fit in one direction — follow the drawing and remove 5mm from the edge of both roofs as shown — measure carefully and cut squarely as no cut lines are provided. Glue the cut edges together, meeting in the center; the other edges will rest on the appropriate wall.

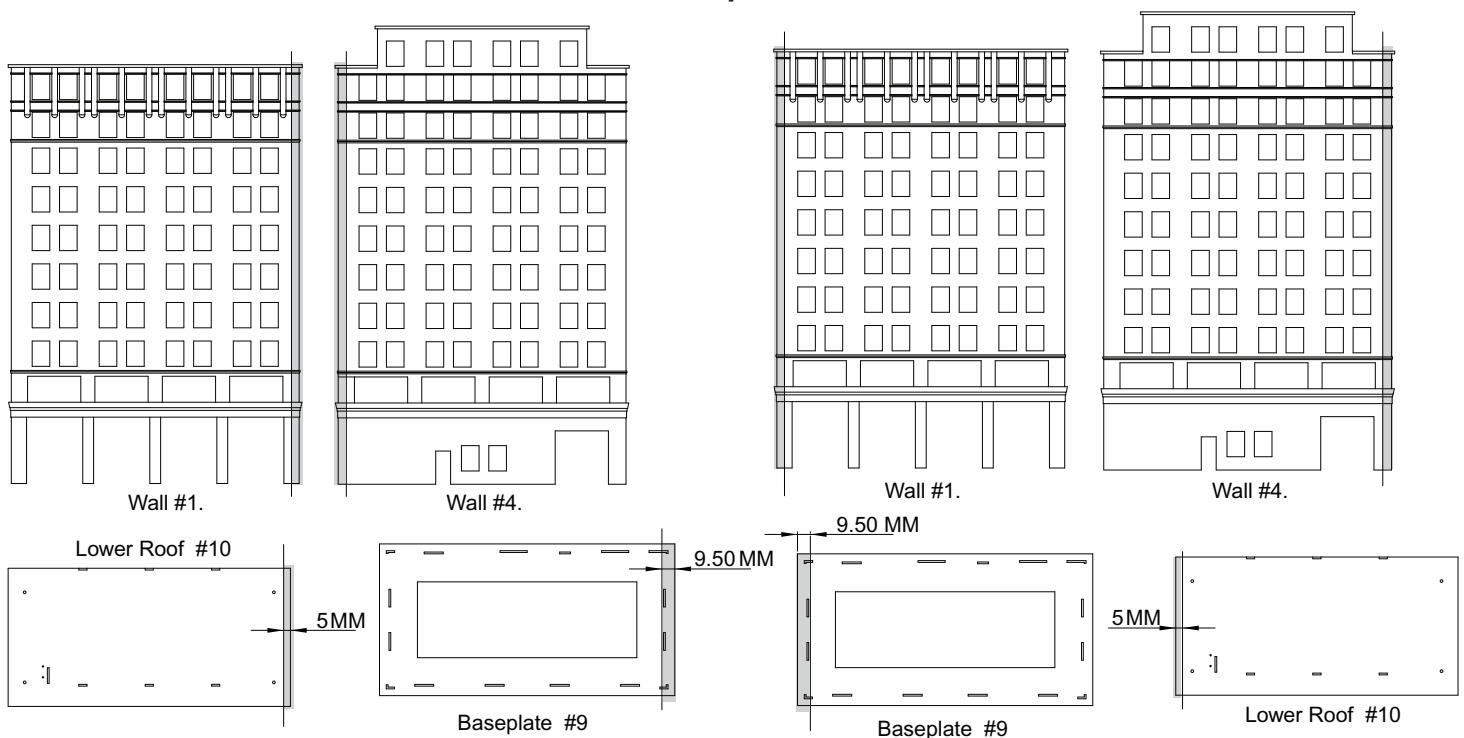
5) The Base (9) is keyed to fit in one direction — follow the drawing and remove 9.5mm from the edge of both bases as shown — measure carefully and cut squarely as no cut lines are provided. Glue the cut edges together, meeting in the center.

6) If using the Cloth Awnings: The Awning for Wall 1 can be used as-is, centered on the front of the building, or a longer version can be made by splicing two long and one short awning together. For both versions, remove all mounting pins from the front awning, and glue it in place where desired. The short awnings can be installed on Wall 3 (or 2 if desired) by drilling out the standard mounting indents.

7) Follow the Standard Assembly steps to complete the model.



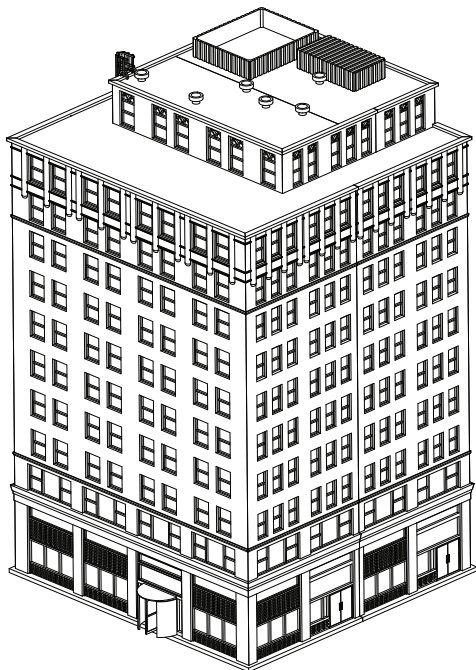
## LONGER STRUCTURE - 2 Kits Required - Illustrations



## WIDER STRUCTURE – Requires 2 or More Kits, Each Sold Separately

Refer to the instructions under SHORTER STRUCTURE for the proper ways to cut and sand wall sections.

See Illustrations on following page.



1) Mark the back of the Walls from your first kit with a permanent marker as KIT #1, then do the same for each subsequent set of Walls (KIT #2, KIT #3 etc.) to properly identify parts for the cutting operation.

2) Score the edge groove on the back of Walls 2 & 3 and remove the proper edges from KIT #1 and KIT #2 parts. As these sections are thicker and have more surface detail, score these parts fairly deeply to prevent damage when snapped.

3) The Upper Roof (11) is keyed to fit in one direction — measure carefully and cut squarely as no cut lines are provided. A few mounting lugs on the bottom of the Roof may need to be removed for a good fit. Drill the marked holes on the diagram to 5/64" to fit vents (41) as suggested. Glue the cut edges together.

4) The Base (9) is keyed to fit in one direction — follow the drawing and remove 6.5mm from the edge of both bases as shown — measure carefully and cut squarely as no cut lines are provided. Glue the cut edges together, meeting in the center.

5) Make a new Lower Roof — parts #10 will not be used — from .030" and .040" styrene sheet (we suggest an 8 x 21" sheet, available at most hobby shops or from walthers.com), each 202.5 x 208.5mm, and laminate together.

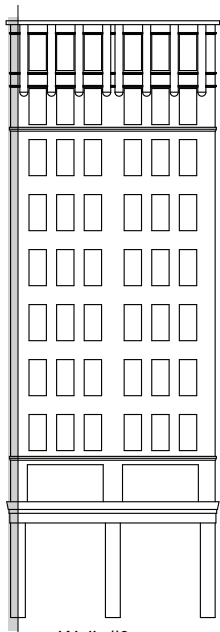
6) Trim the remaining parts shown to the proper dimensions — measure carefully and cut squarely as no cut lines are provided. Glue both #6 Walls together at the cut line to make one longer wall. Do the same for both #7 Walls — after gluing, both sets of walls must be the same length to fit properly, and will fit in the same positions as the unmodified parts.

7) If using the Cloth Awning: The Awning for Wall 1 (part 44) can be used as-is, and installed by drilling out the standard mounting indents. To add the Awning on Wall 3, remove 2mm of material from the center panel of #44 then glue the remaining sections together. Remove all mounting pins and glue in place where desired.

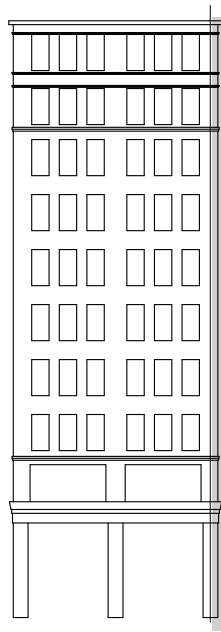
8) Go to the Standard Assembly to finish the kit; note that the bottom mounting pins of the Caged Ladder assembly (42, 43) will need to be clipped due to the custom-built lower roof.



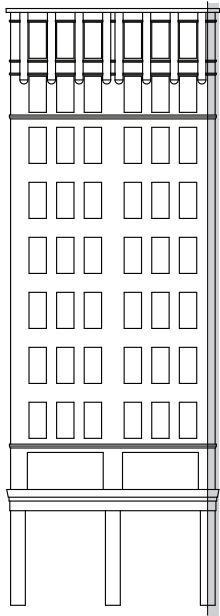
# WIDER STRUCTURE (2 Kits Required) - Illustrations



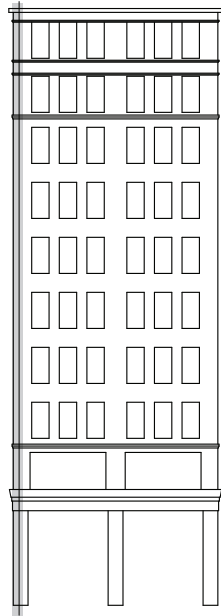
Wall #3.



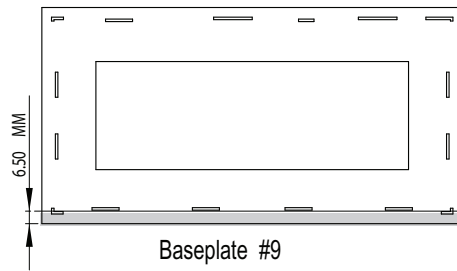
Wall #2.



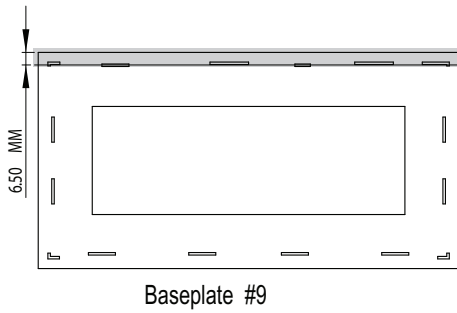
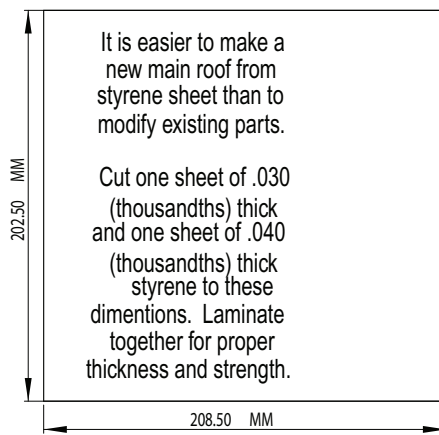
Wall #3.



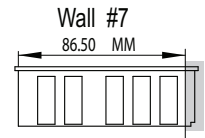
Wall #2.



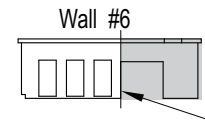
Baseplate #9



Baseplate #9

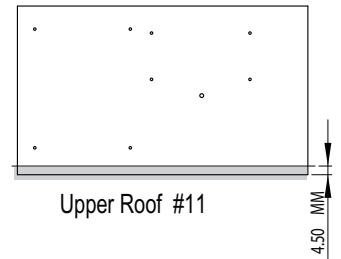


Wall #7  
86.50 MM

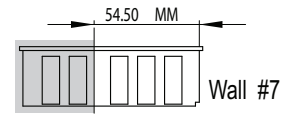


Wall #6

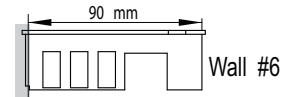
Cut even with edge of door.



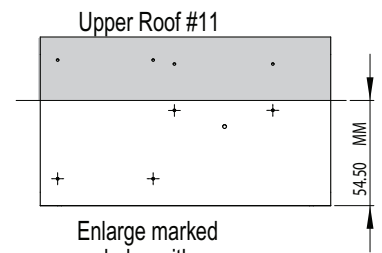
Upper Roof #11  
4.50 MM



Wall #7  
54.50 MM



Wall #6  
90 mm



Upper Roof #11  
54.50 MM

Enlarge marked holes with a 5/64ths drill bit.