

## **63712 Weingut „Hauser-Bühler“ - Hauptgebäude N**

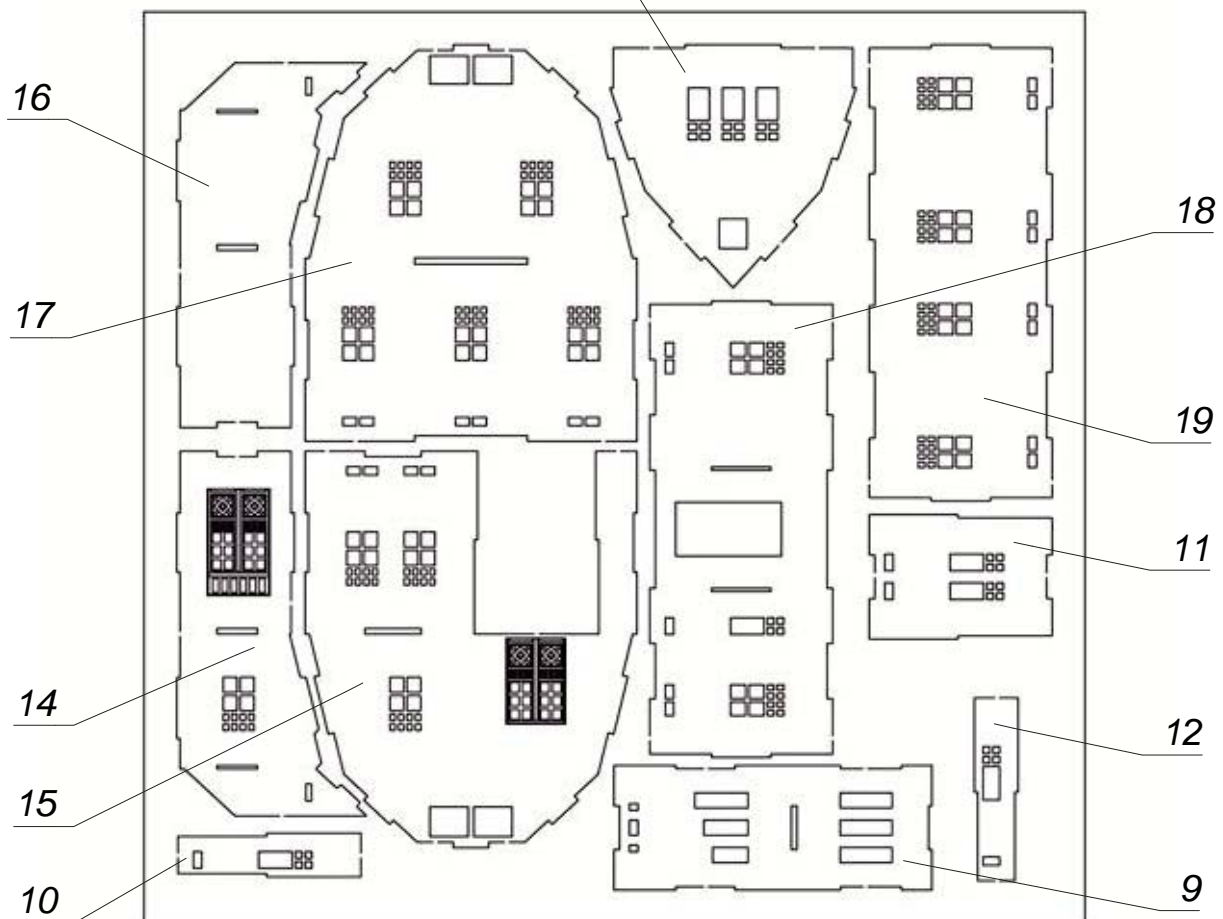
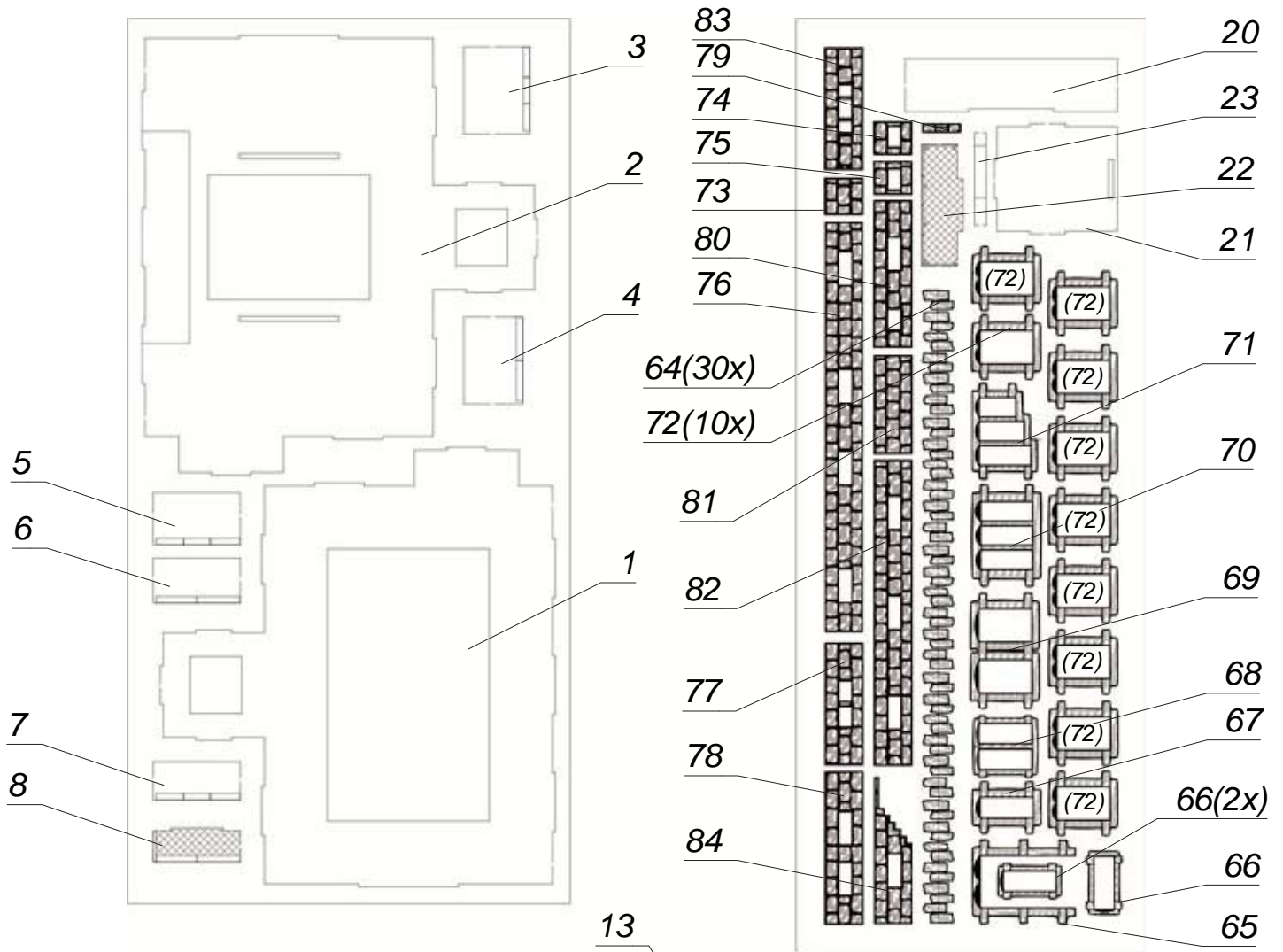
*Winery "Hauser-Bühler"- Main Building N*

*Domaine viticole "Hauser-Bühler" - bâtiment principal N*

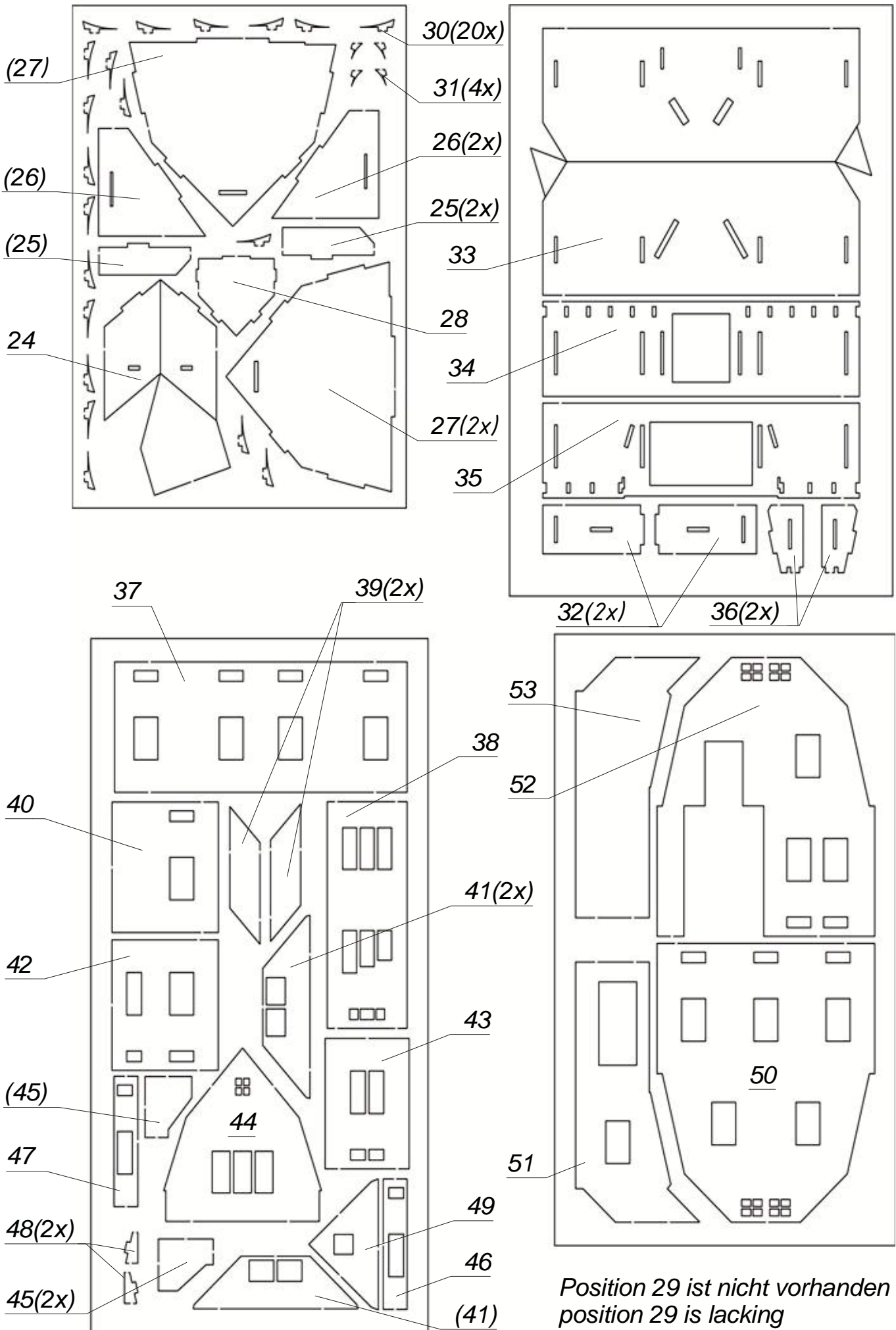
*Propiedad vinícola "Hauser-Bühler" - casa principal N*

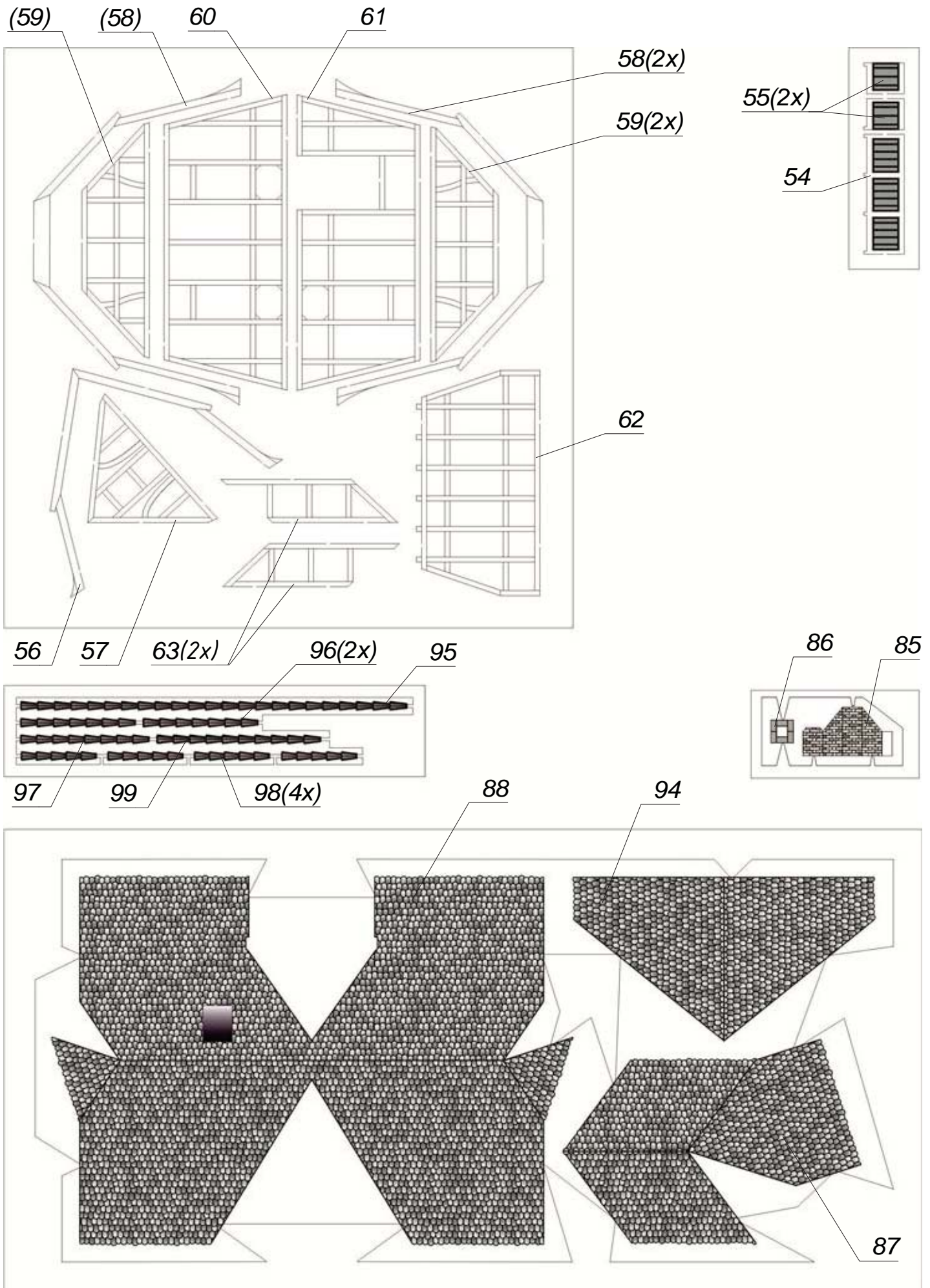
*Wijnhuis "Hauser-Bühler" - hoofdgebouw N*

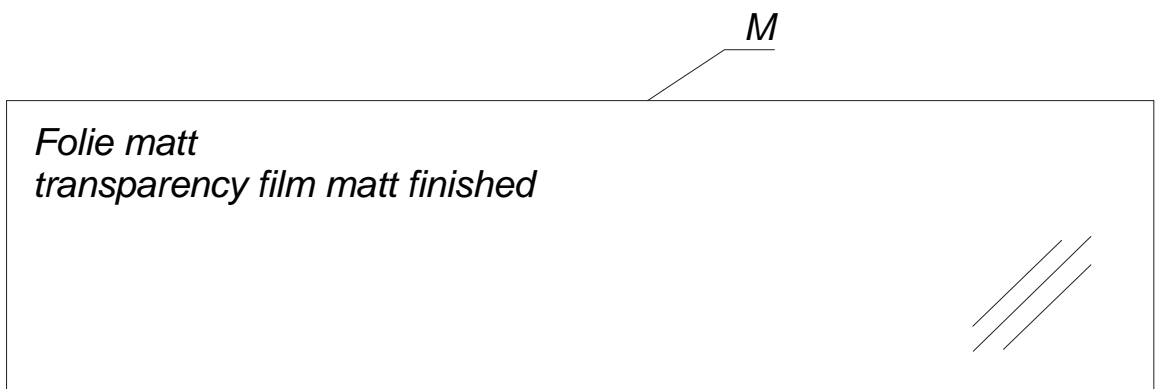
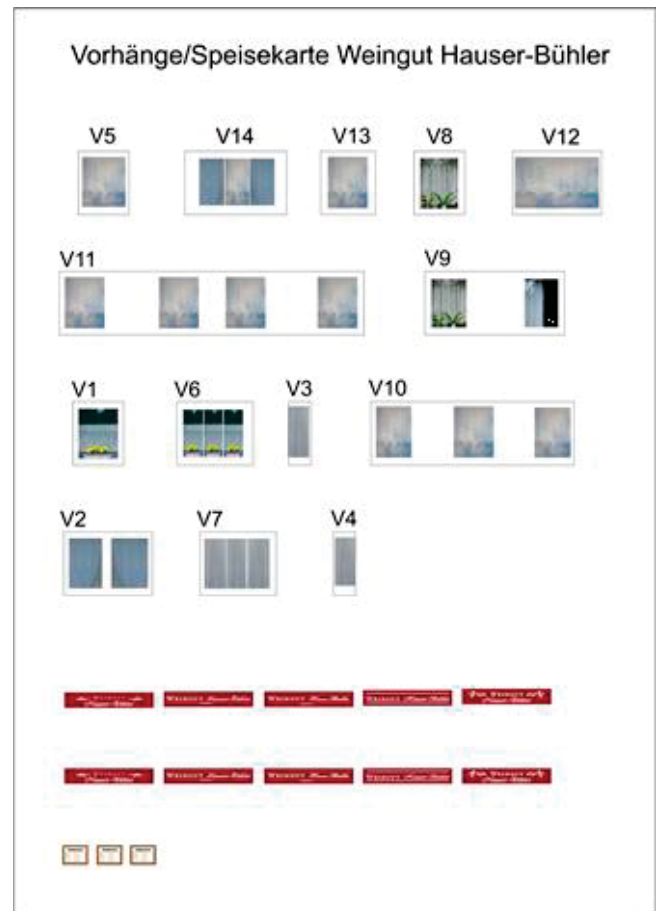
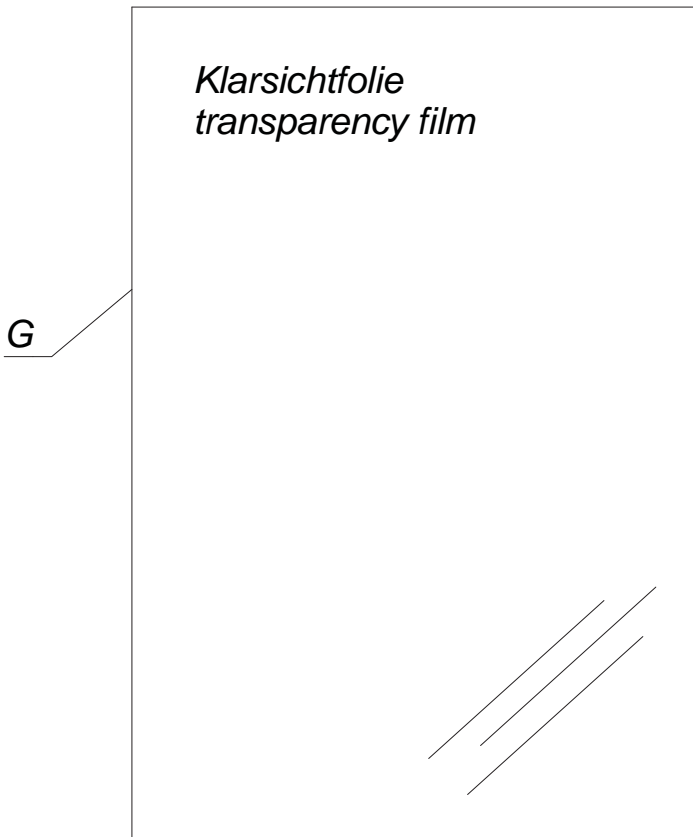
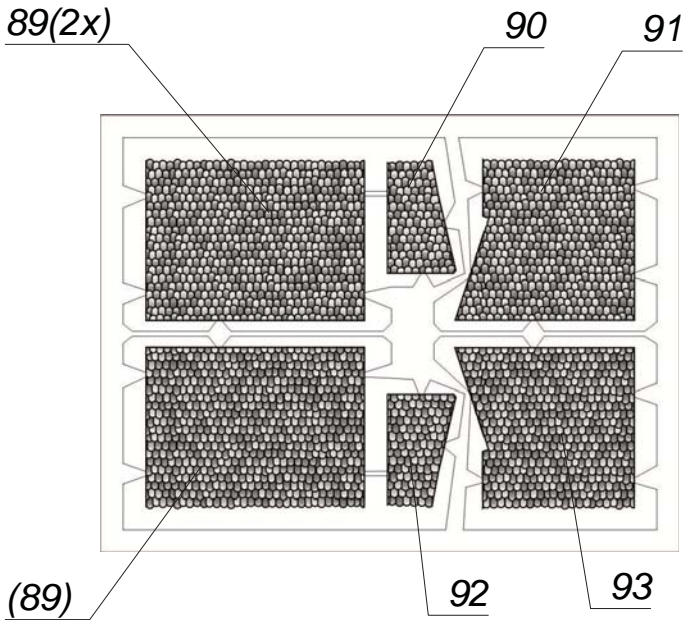




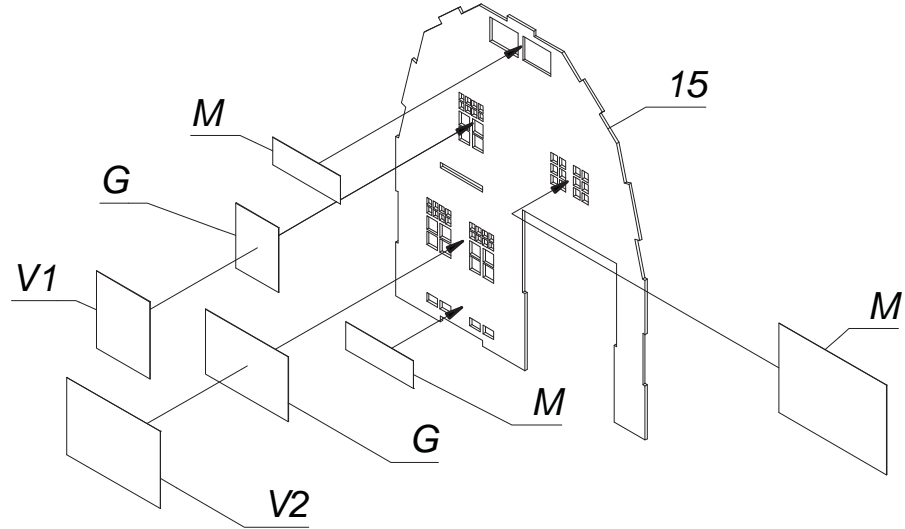




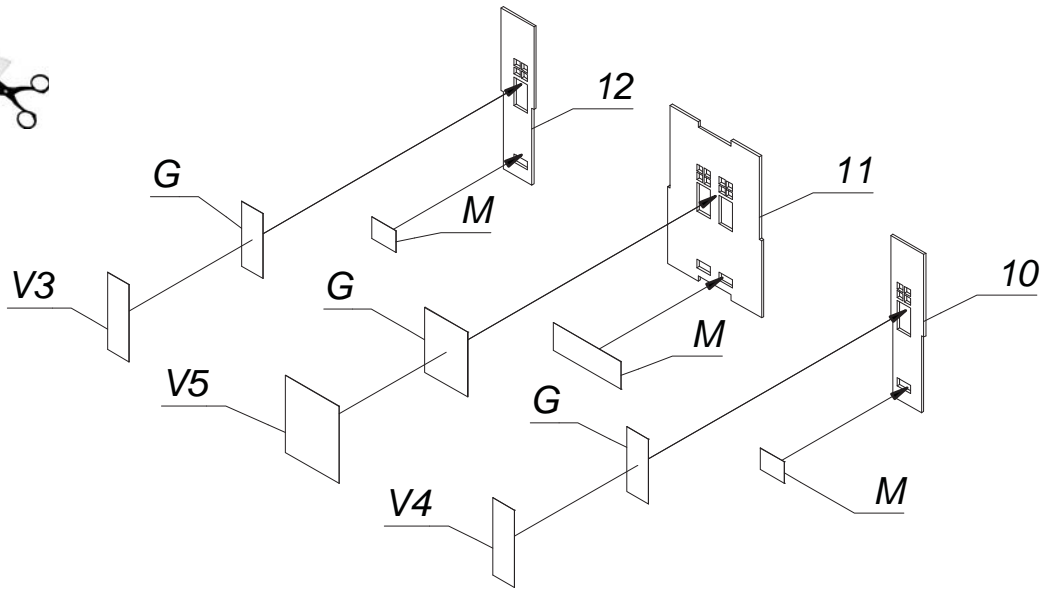




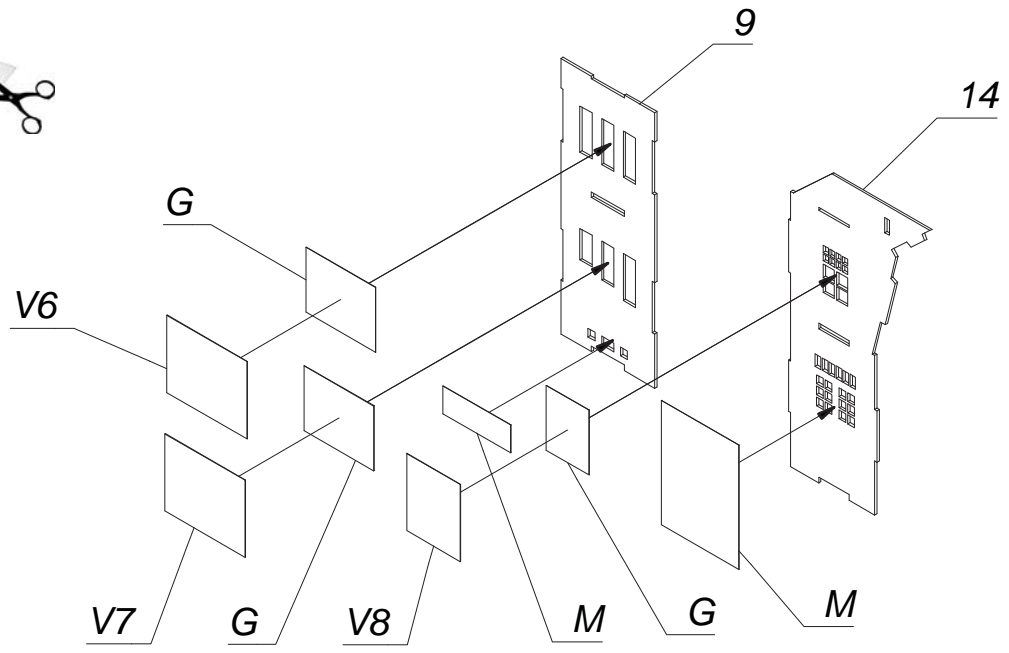
1.



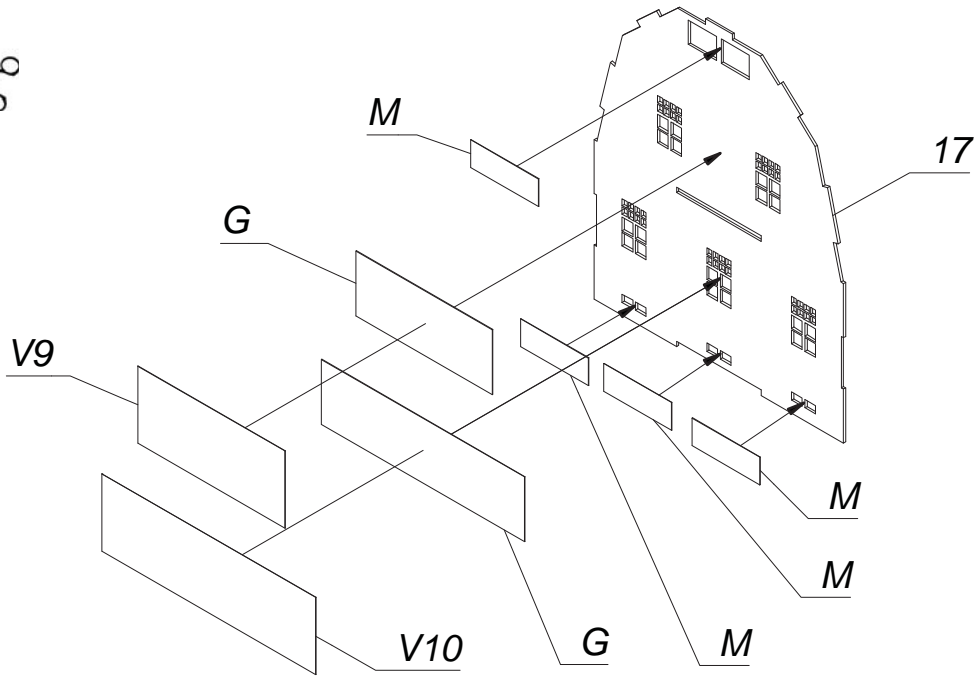
2.



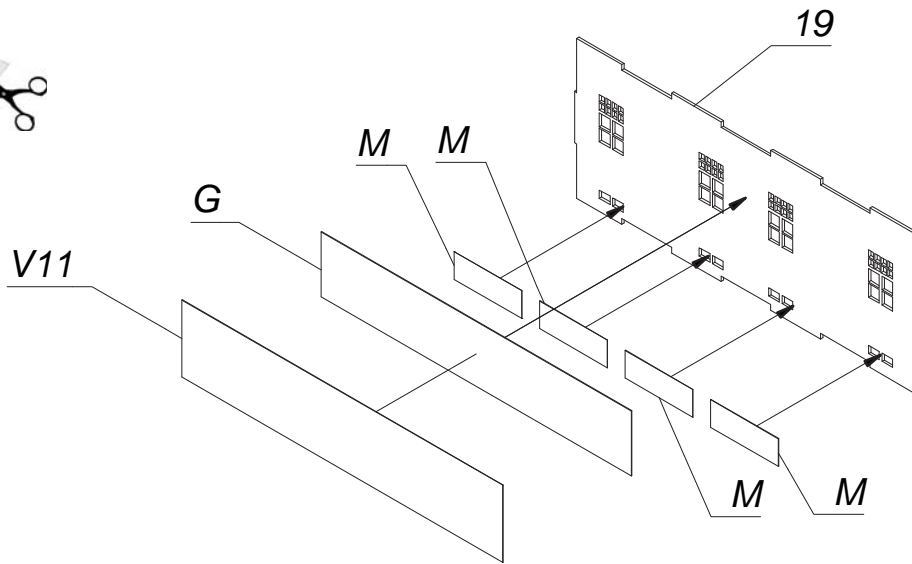
3.



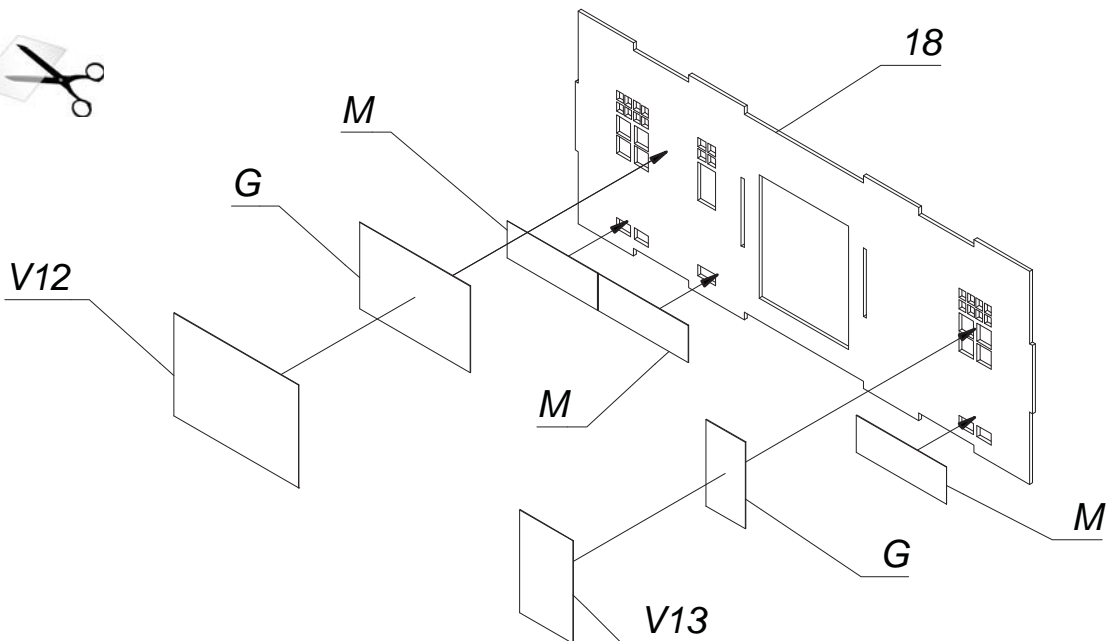
4.



5.

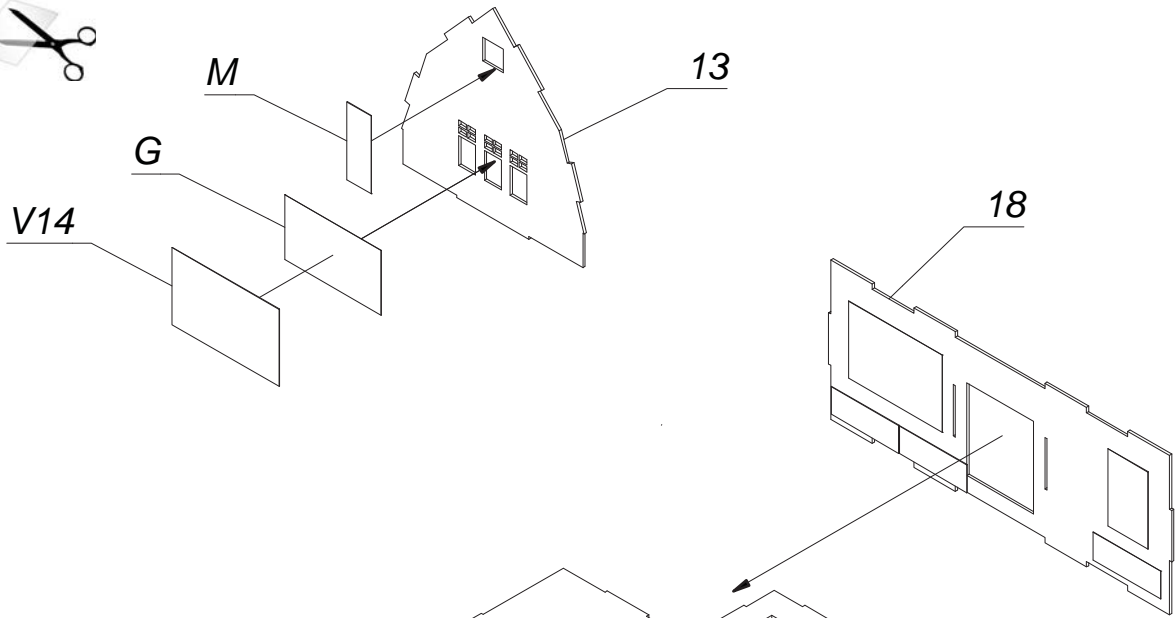


6.

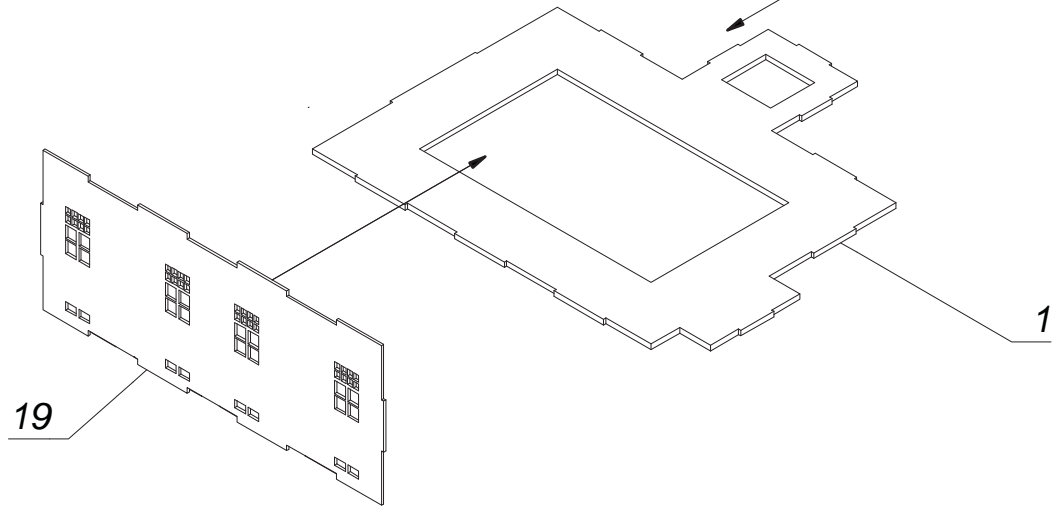




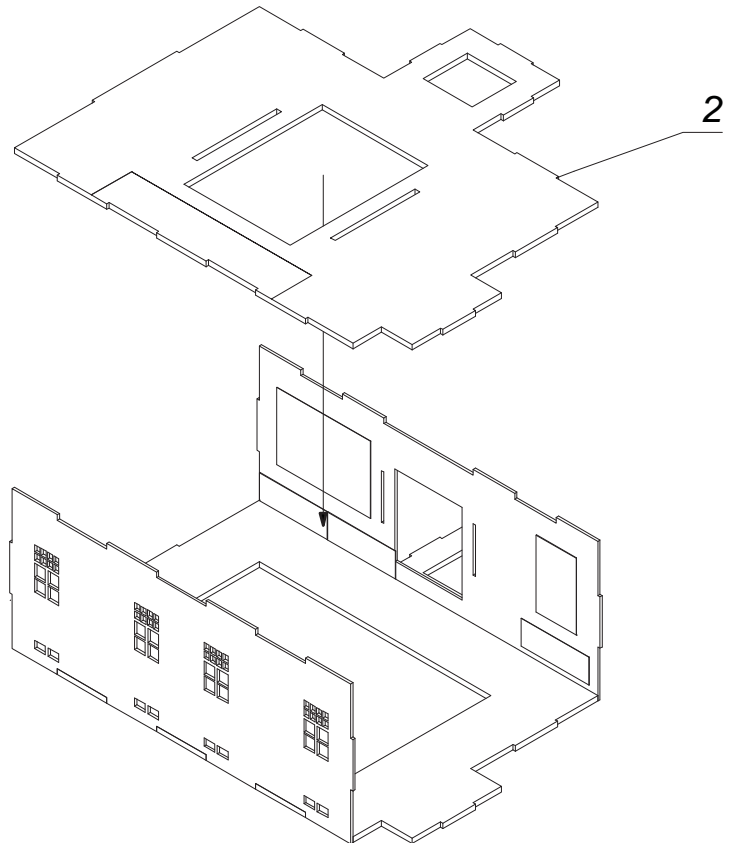
7.



8.

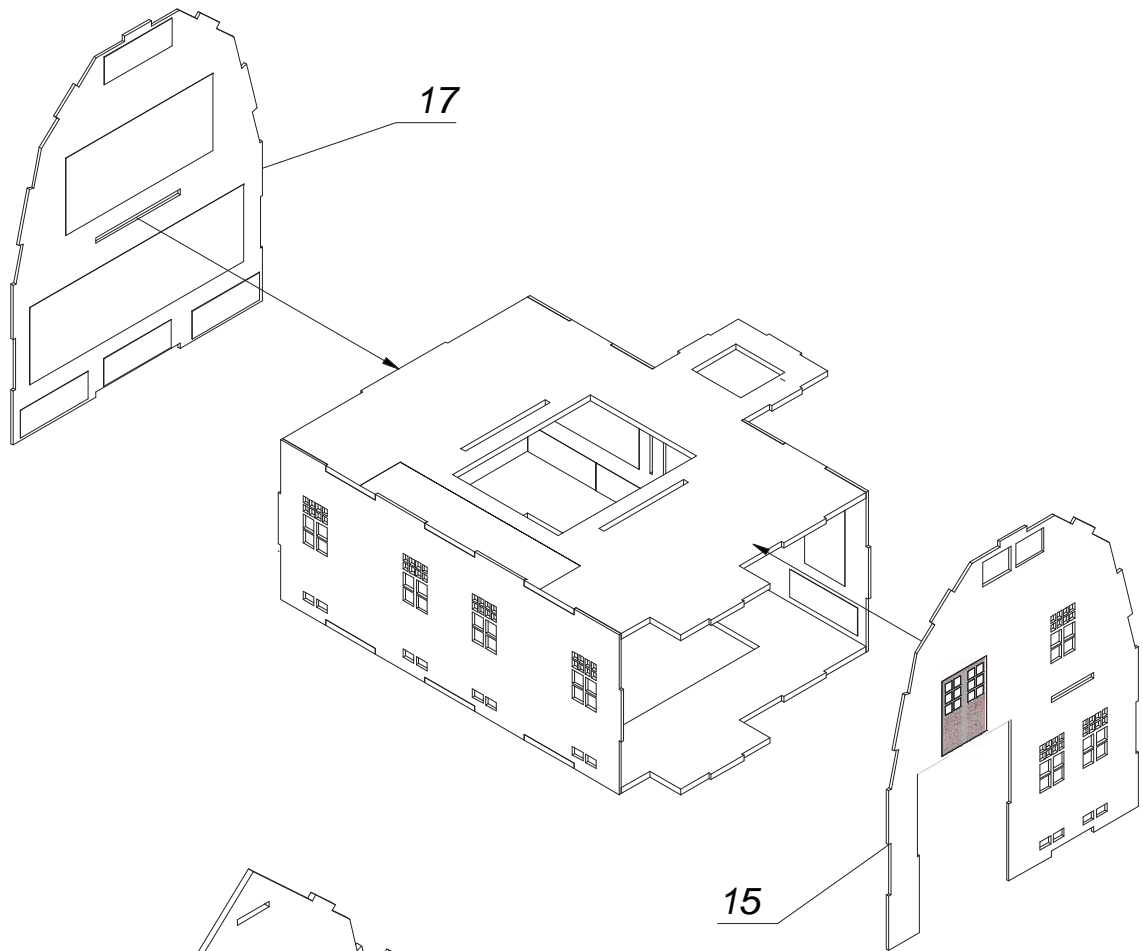


9.

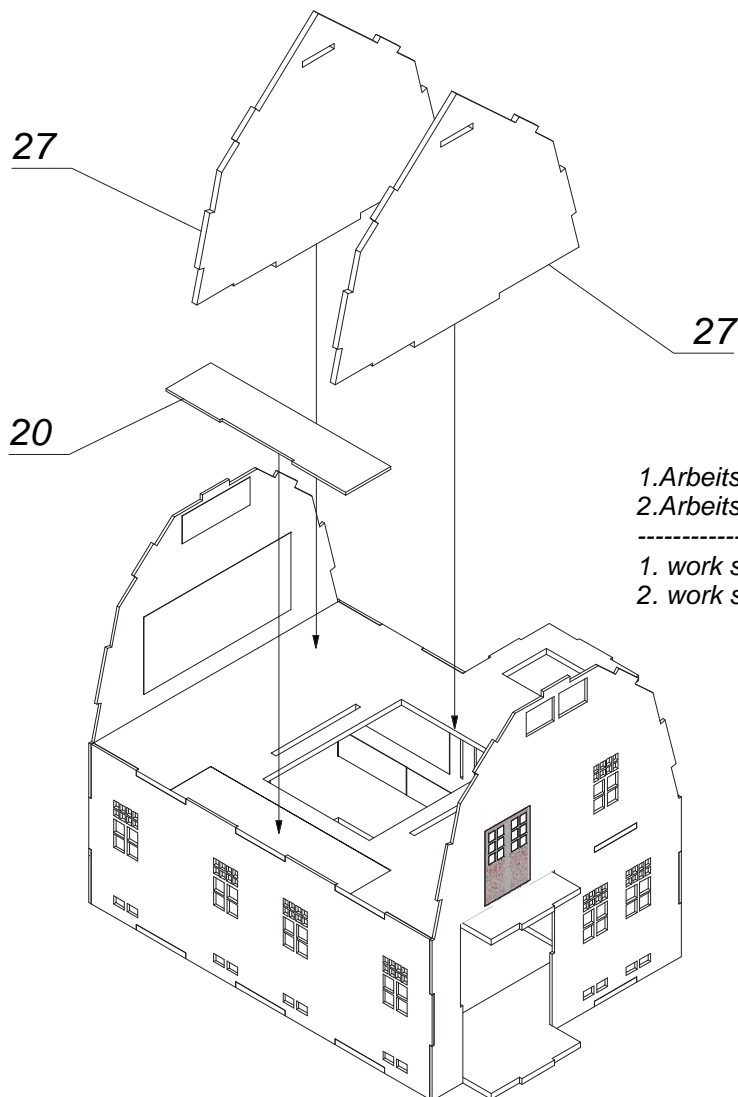




10.



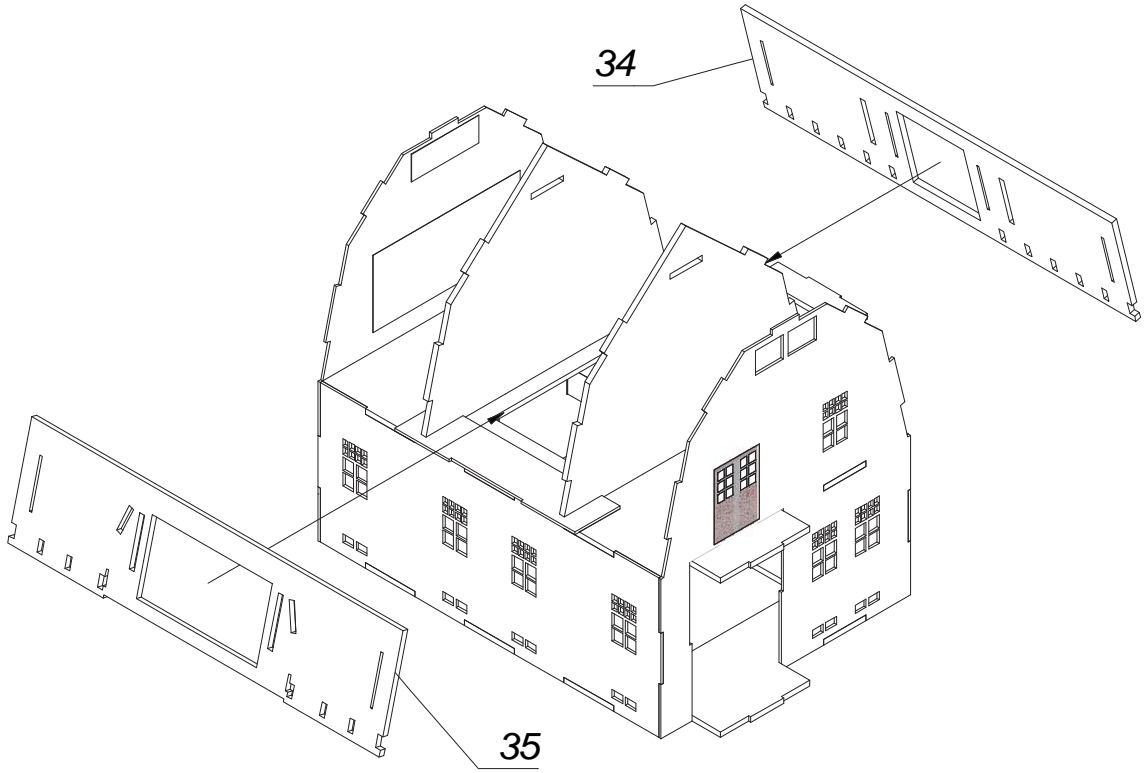
11.



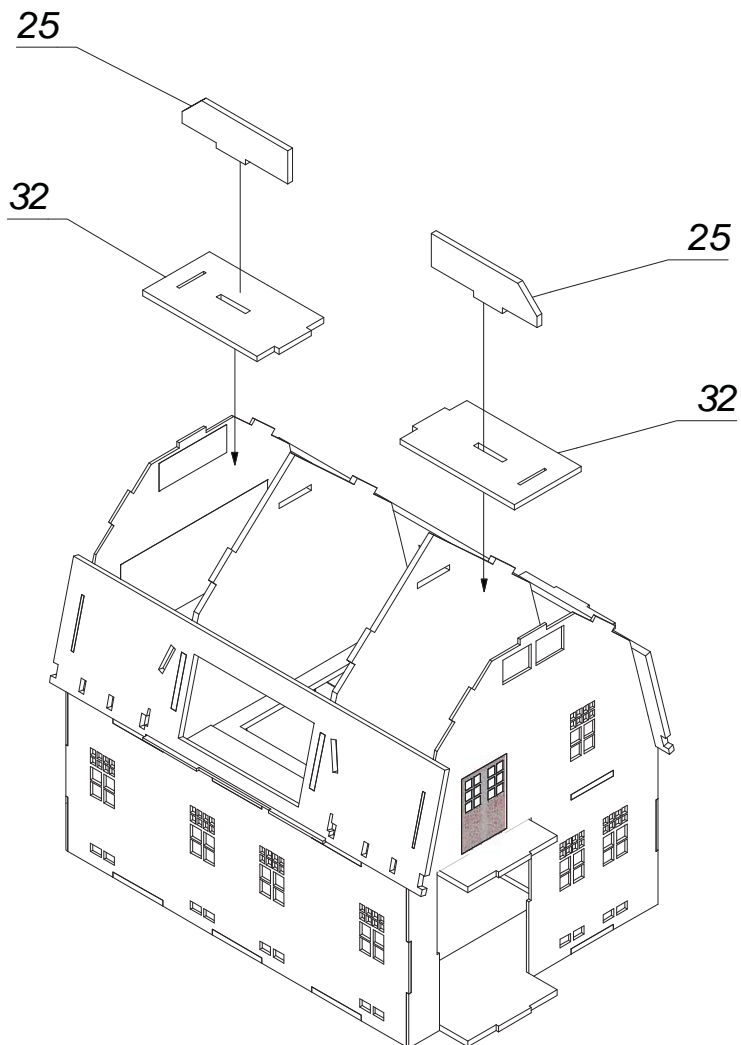
1. Arbeitsschritt: Teil 20 genau in Markierung kleben  
2. Arbeitsschritt: Teil 27 (2x)

-----  
1. work step: part 20 position exactly within marking  
2. work step: part 27 (2x)

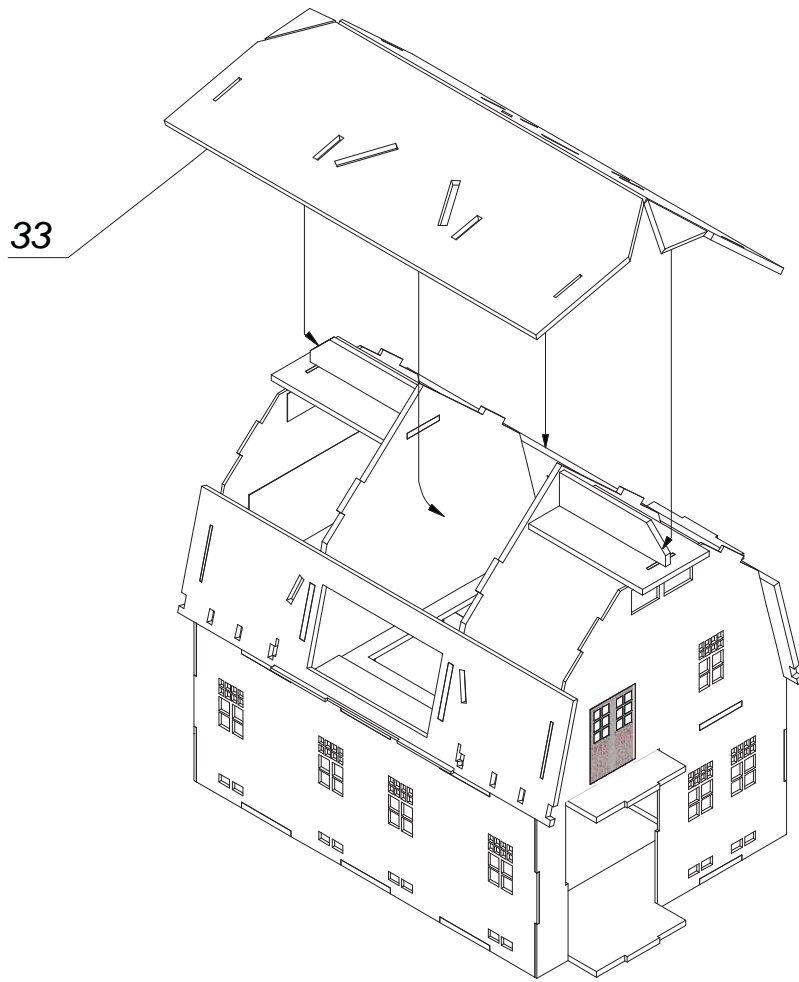
12.



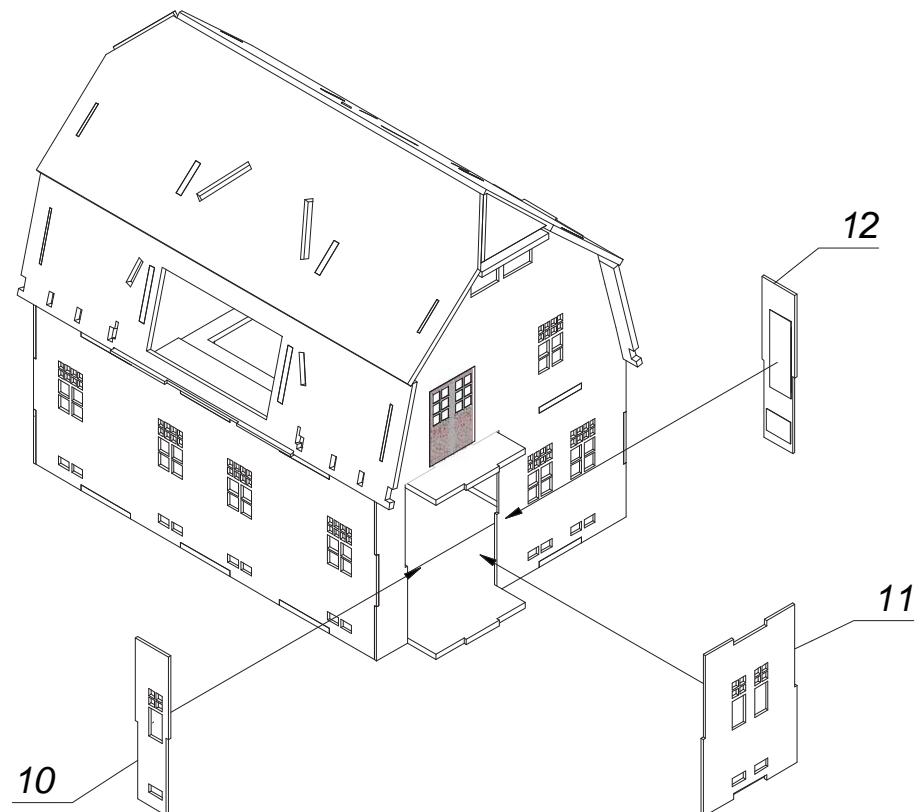
13.



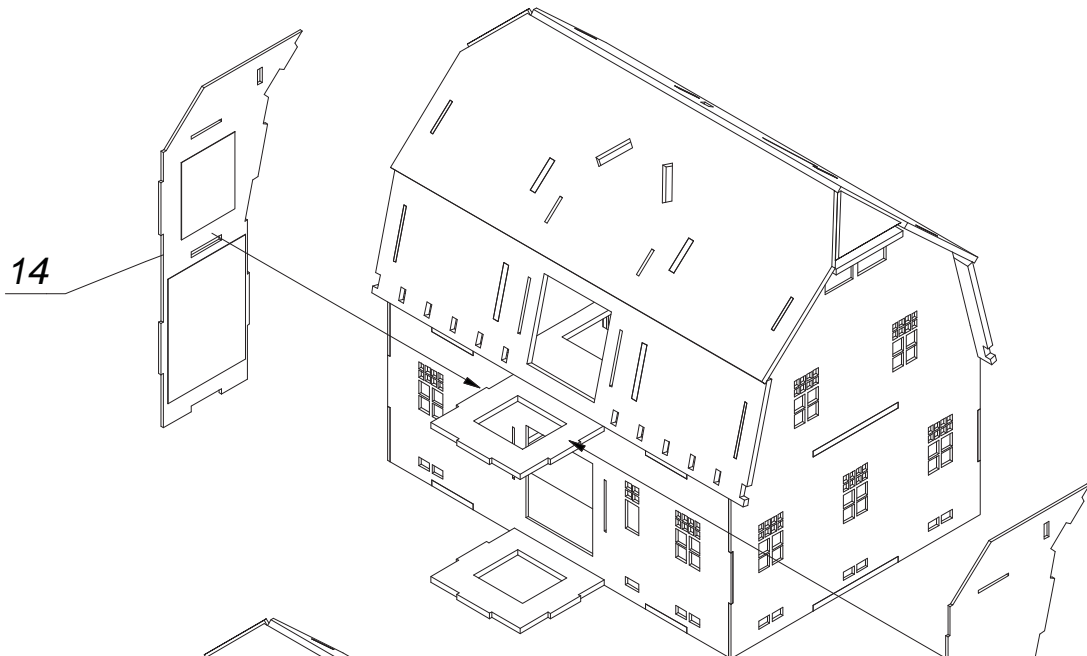
14.



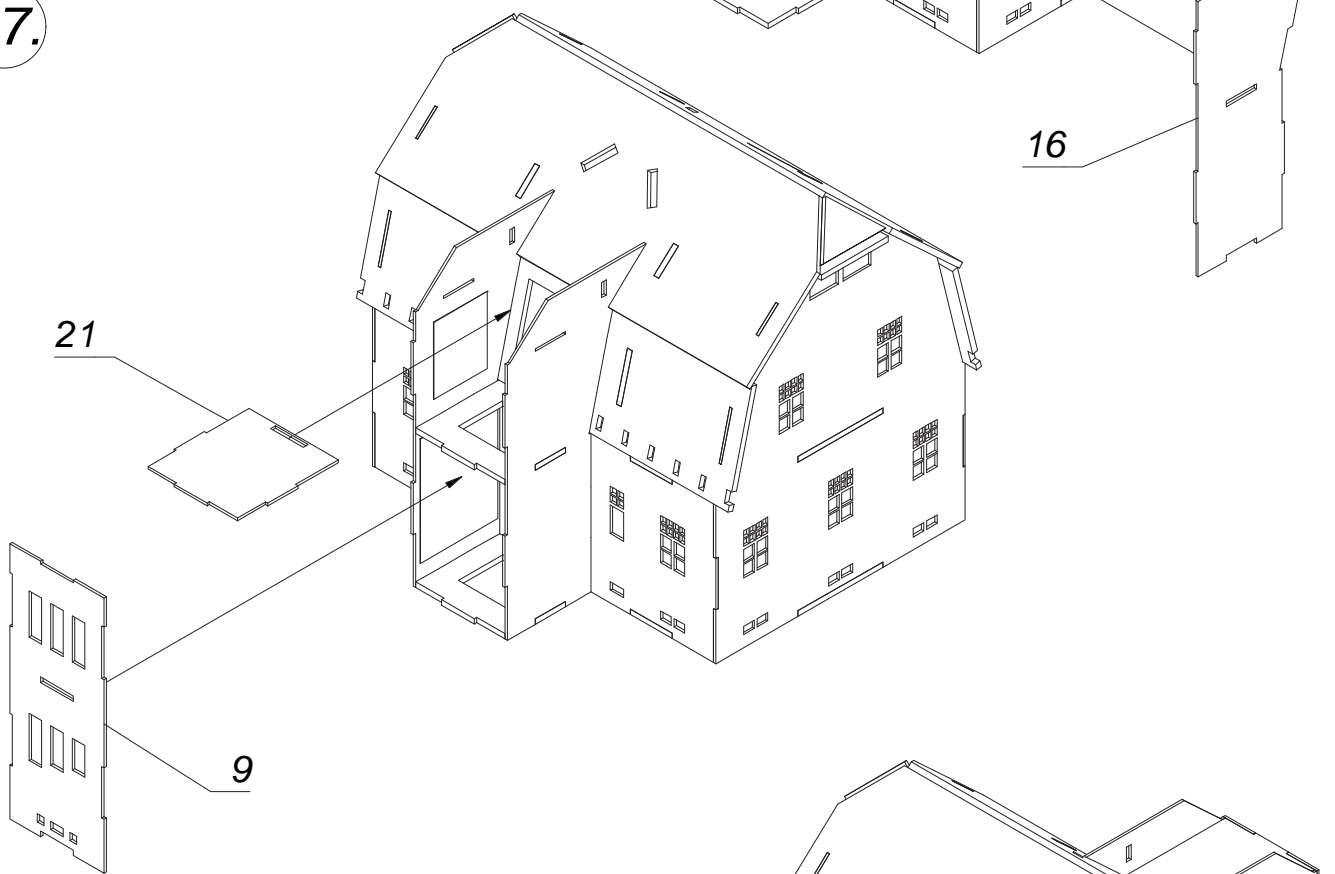
15.



16.



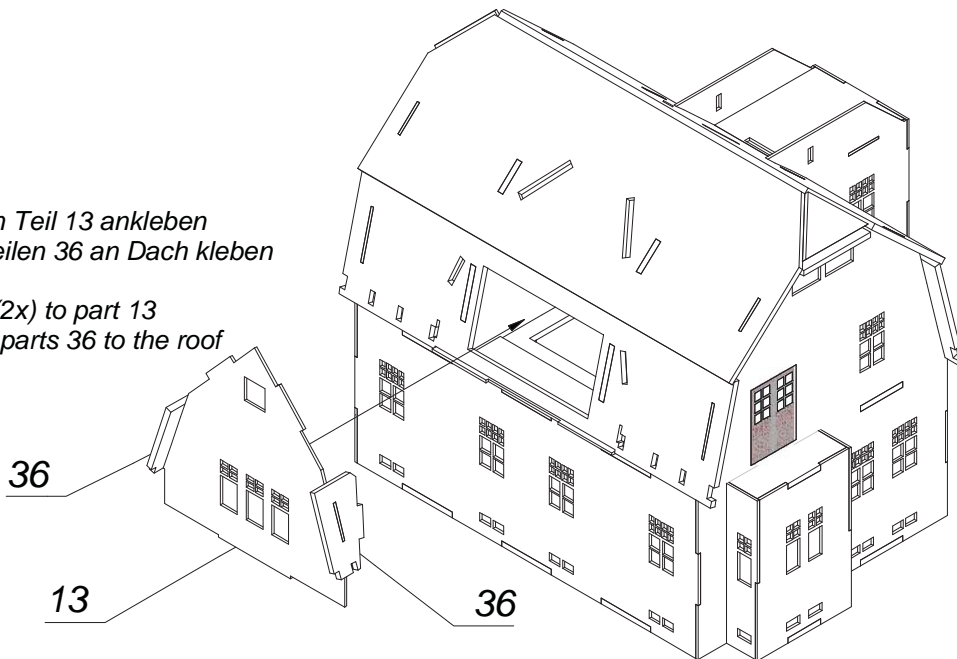
17.



18.

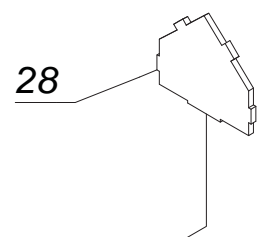
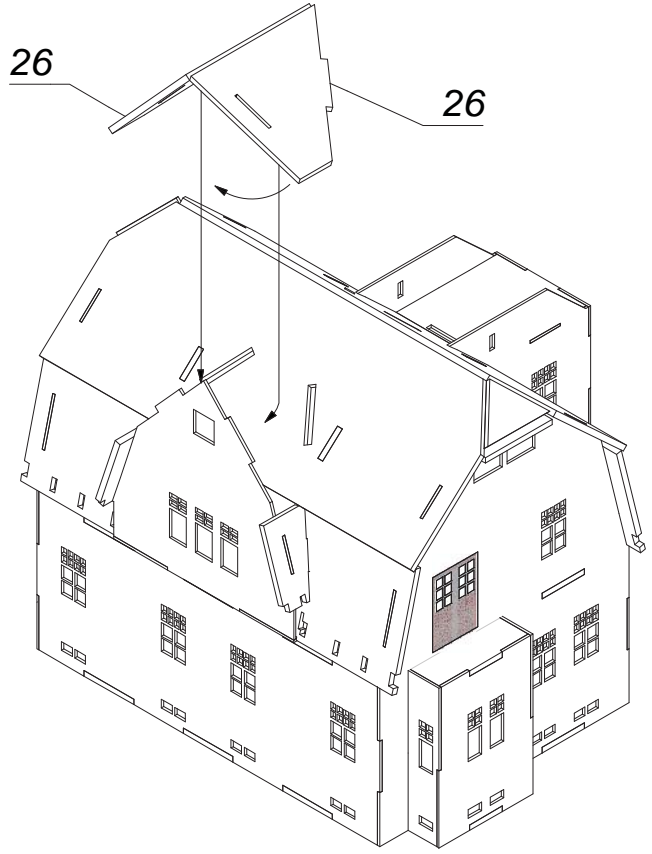
- 1. Arbeitsschritt: Teil 36(2x) an Teil 13 ankleben
- 2. Arbeitsschritt: Teil 13 mit Teilen 36 an Dach kleben

- 1. work step: add part part 36(2x) to part 13
- 2. work step: add part 13 with parts 36 to the roof

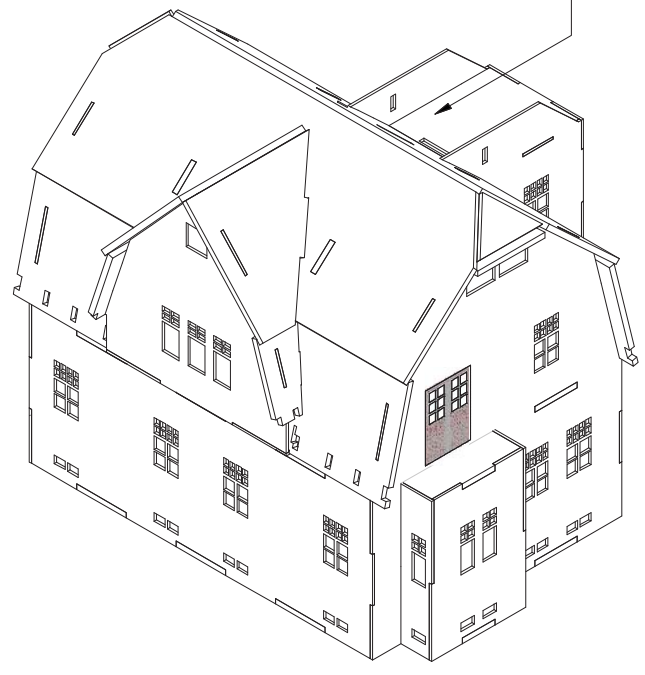




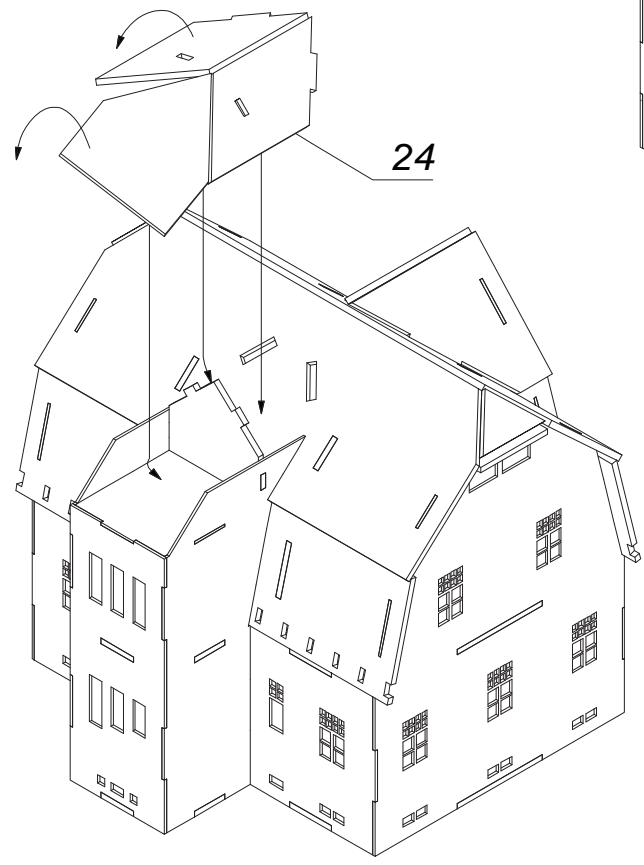
19.



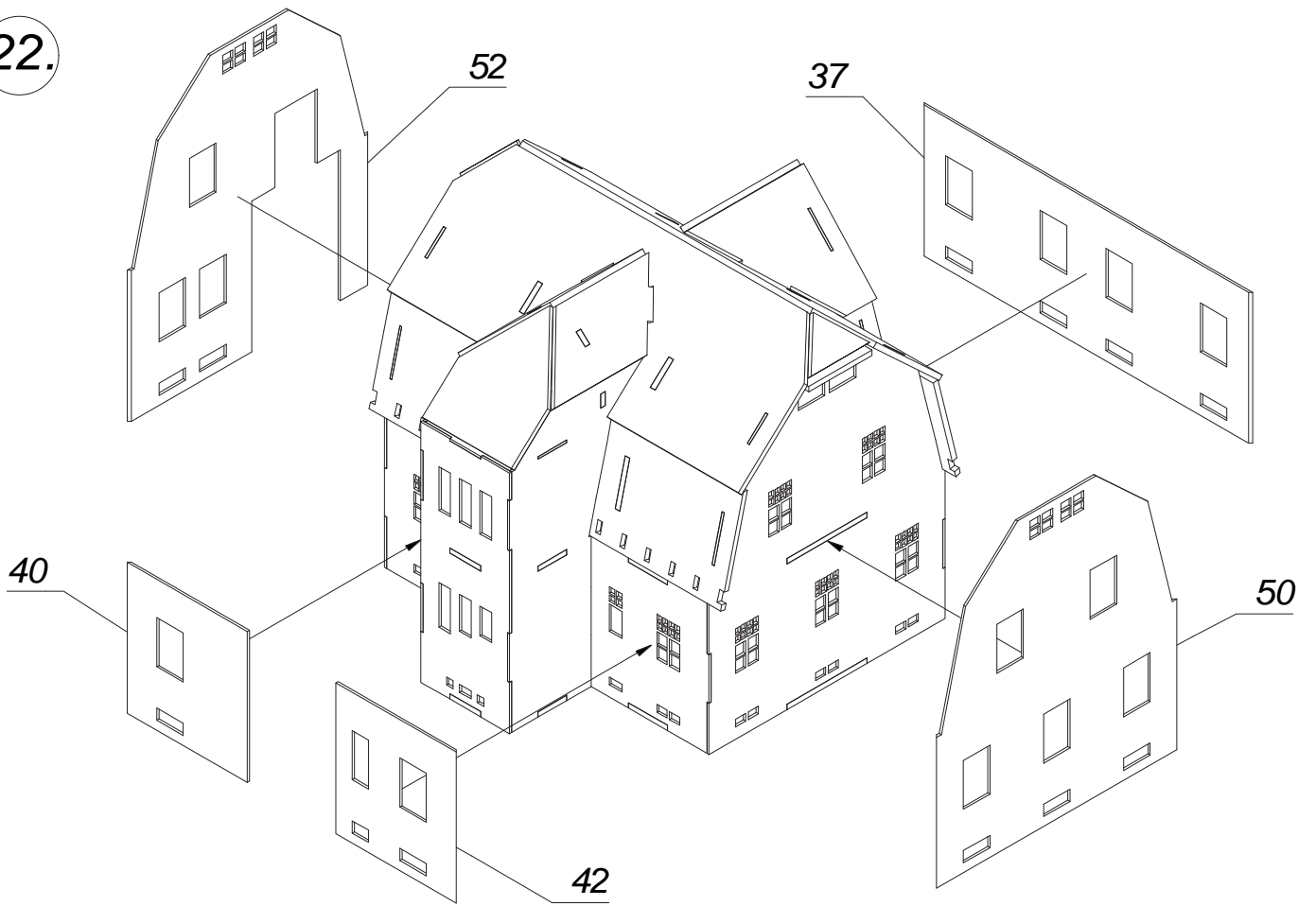
20.



21.



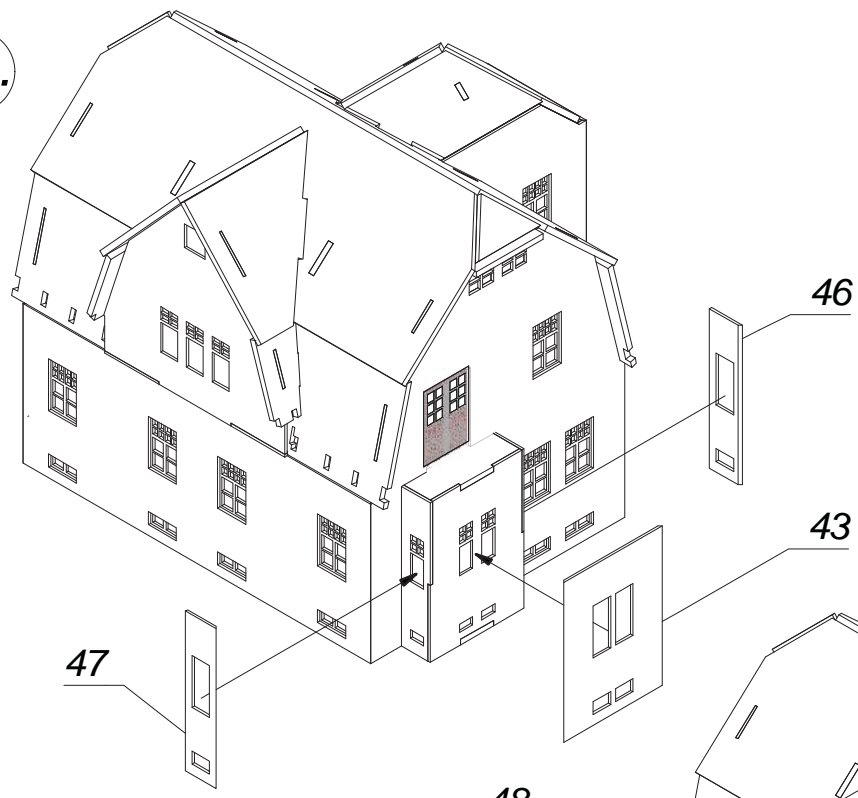
22.



23.

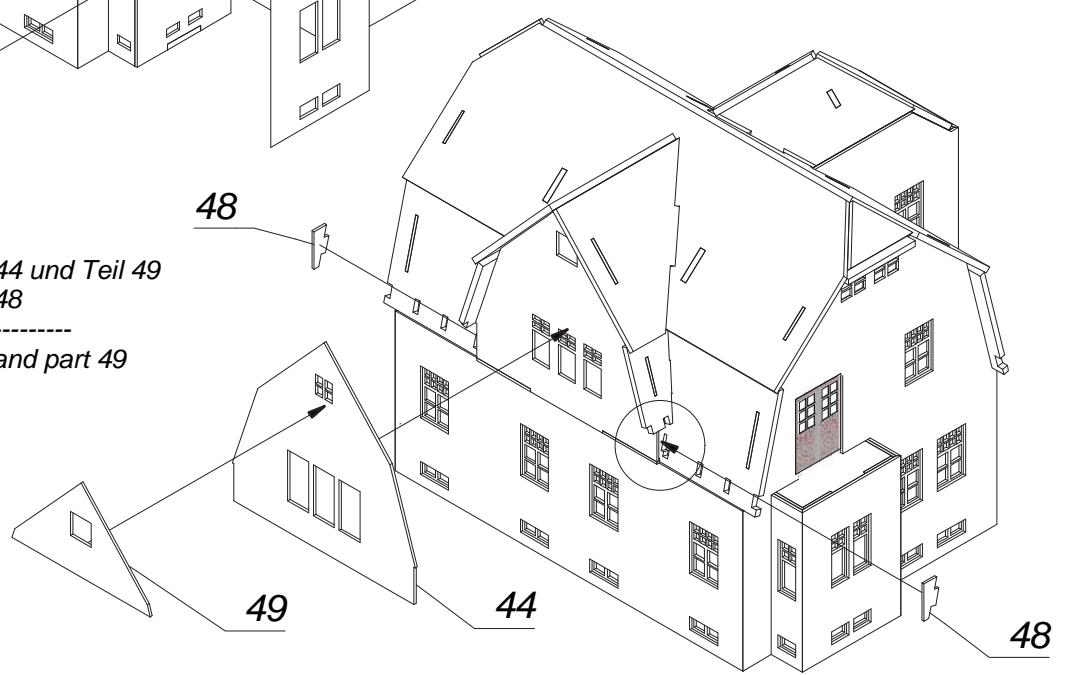


24.

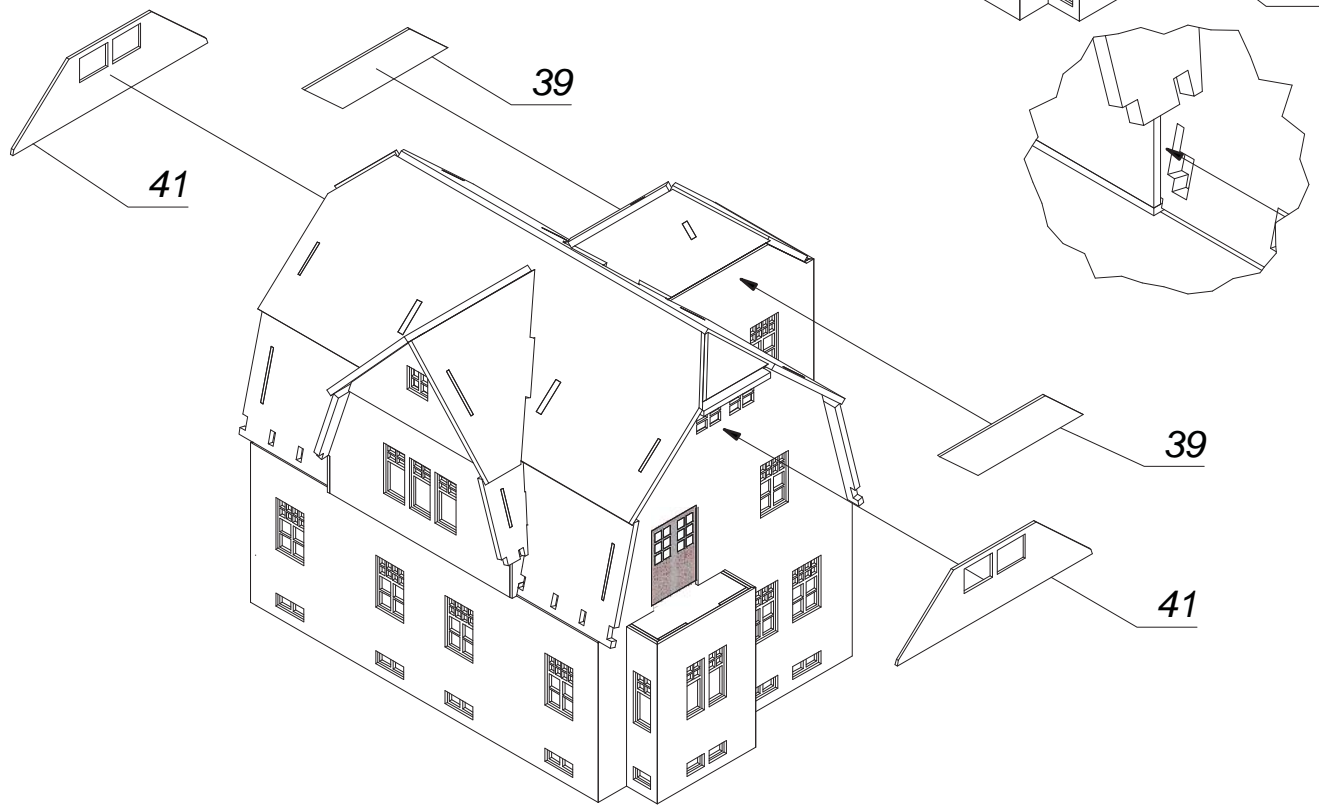


25.

- 1. Arbeitsschritt: Teil 44 und Teil 49
  - 2. Arbeitsschritt: Teil 48
- 
- 1. work step: part 44 and part 49
  - 2. work step: part 48



26.



27.



28.

31 (4x)

89

29.

89

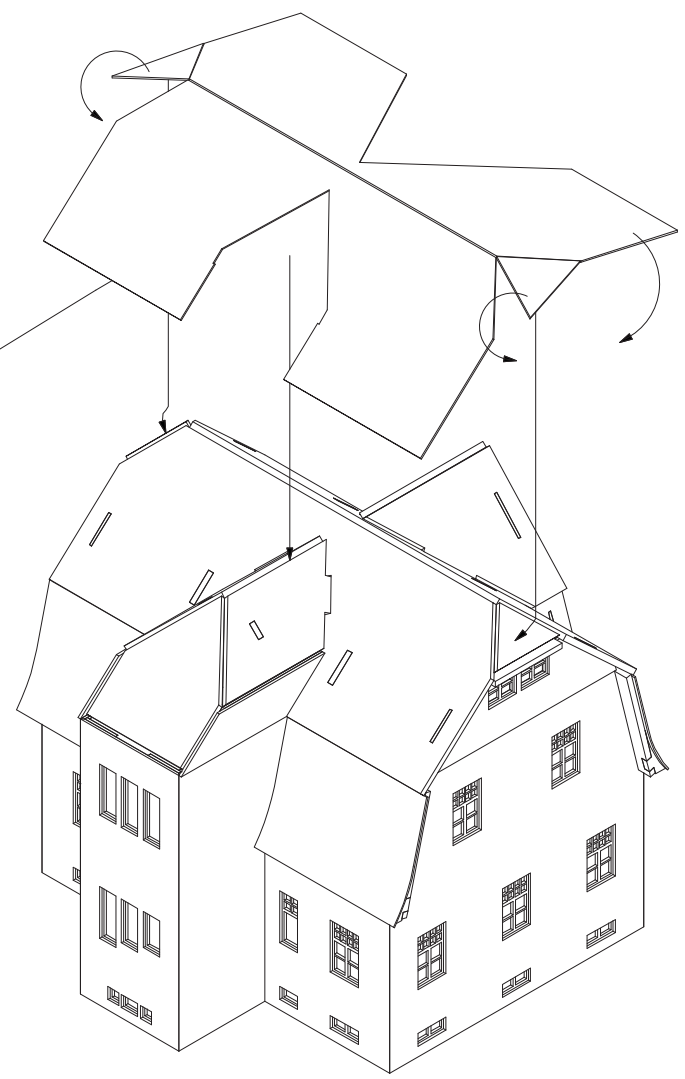
91

93



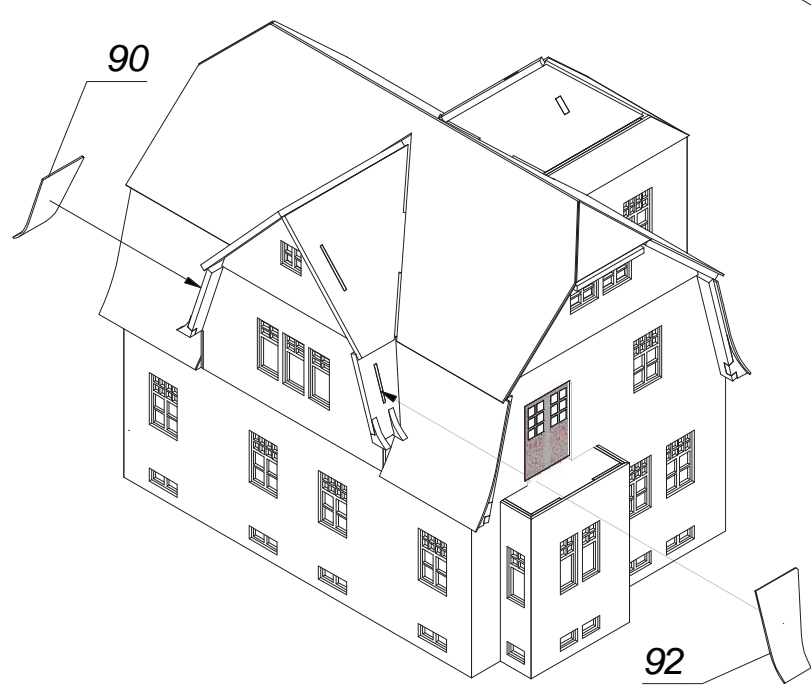
30.

88



31.

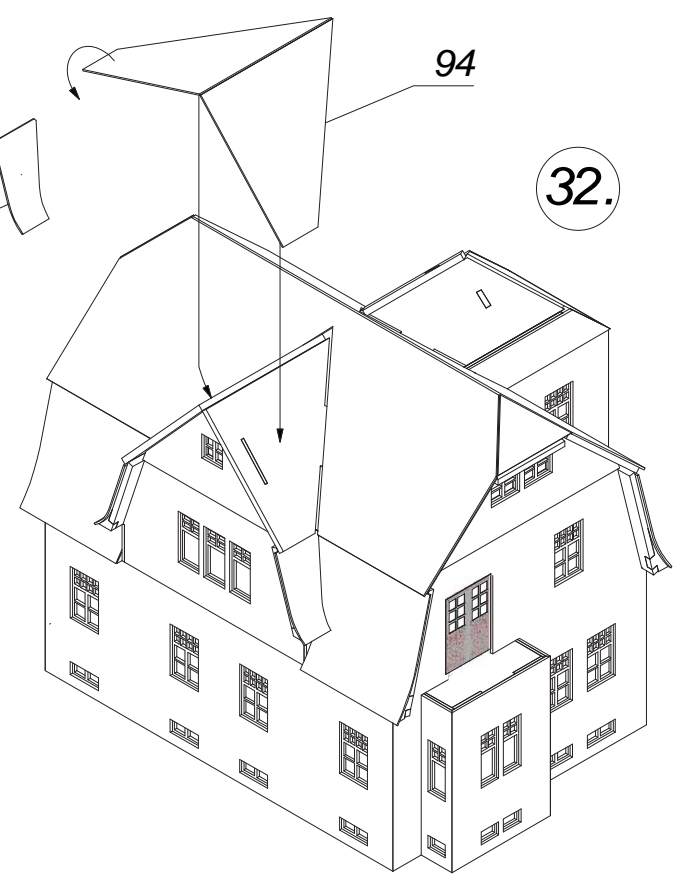
90



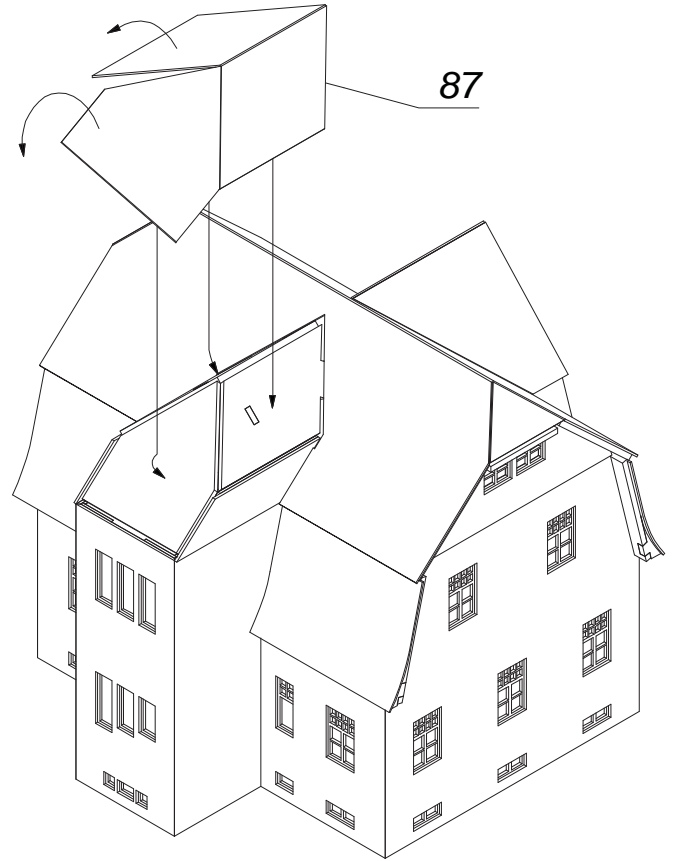
92

94

32.



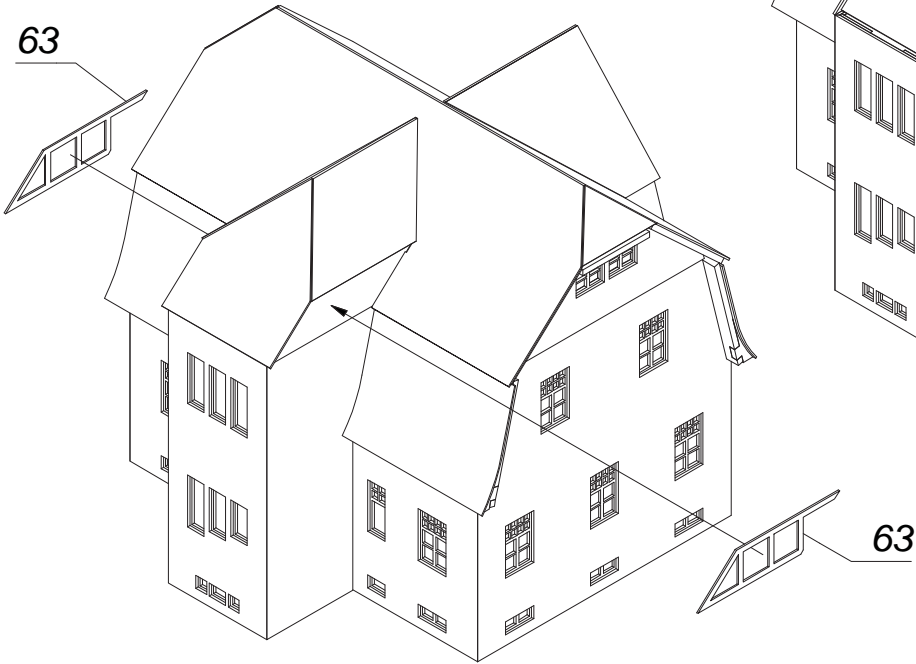
33.



34.

**Achtung!**  
**Balkengravur sichtbar!**

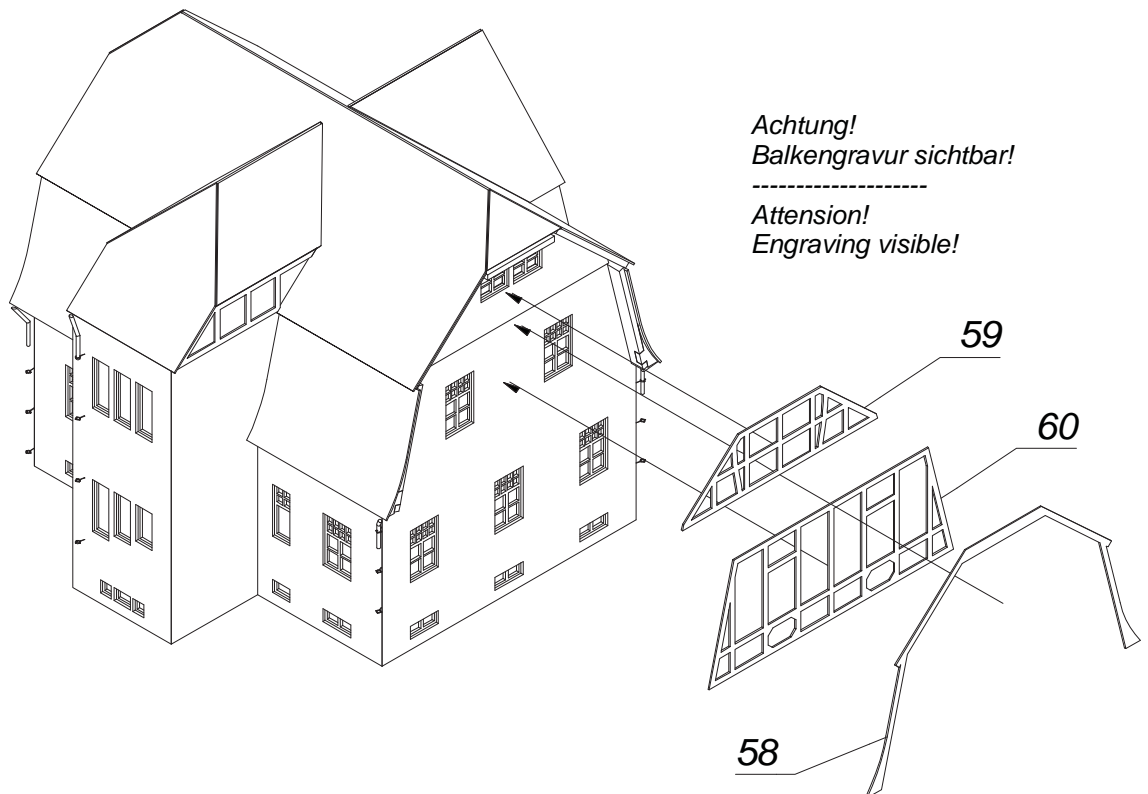
-----  
**Attention!**  
**Engraving visible!**



35.

**Achtung!**  
**Balkengravur sichtbar!**

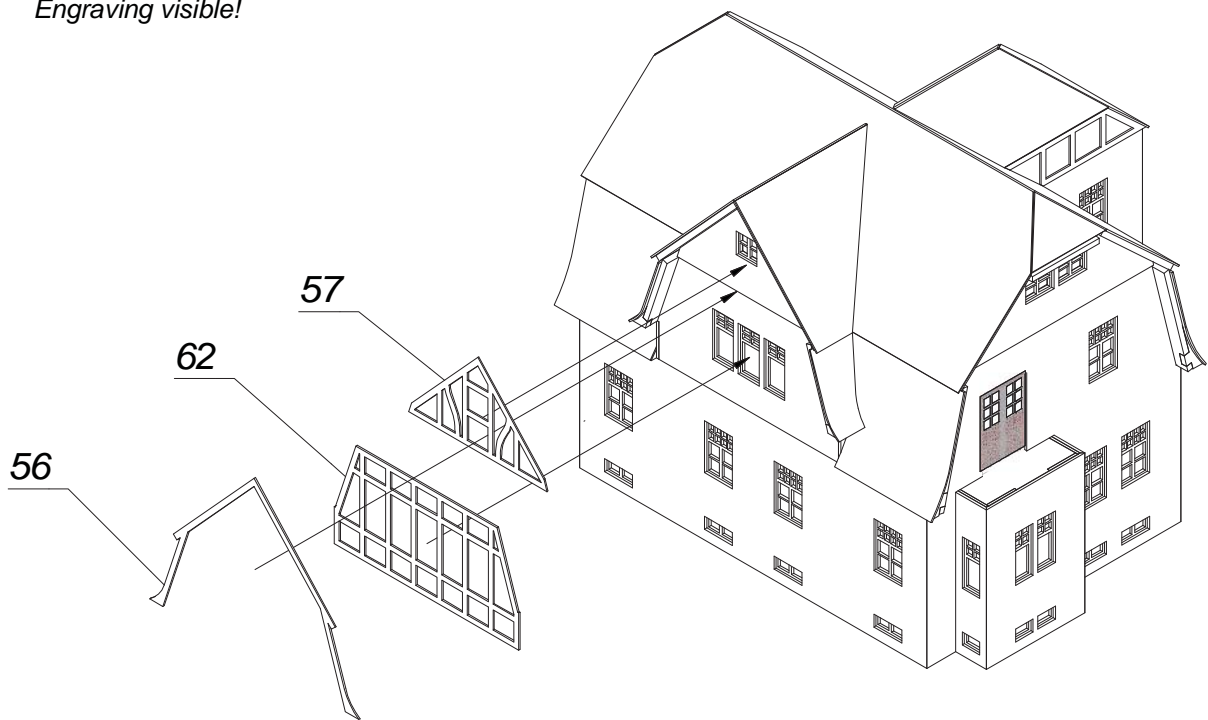
-----  
**Attention!**  
**Engraving visible!**



36.

Achtung!  
Balkengravur sichtbar!

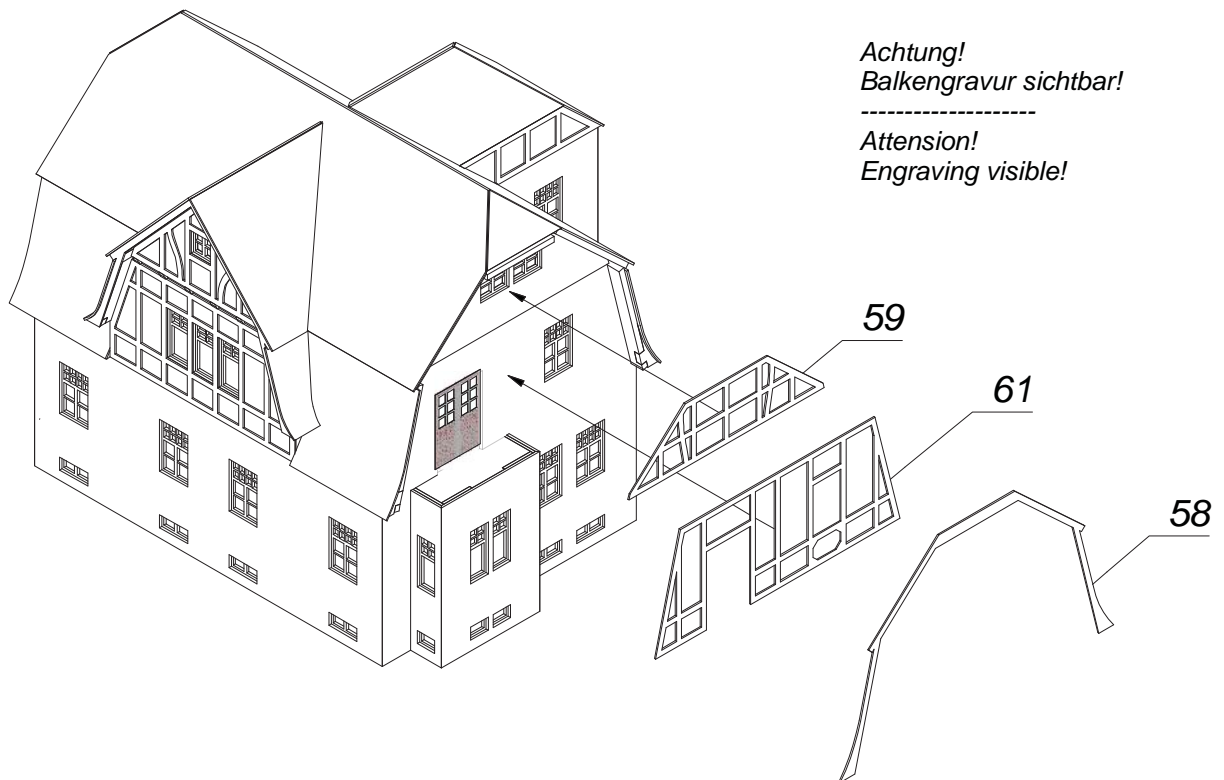
-----  
Attention!  
Engraving visible!



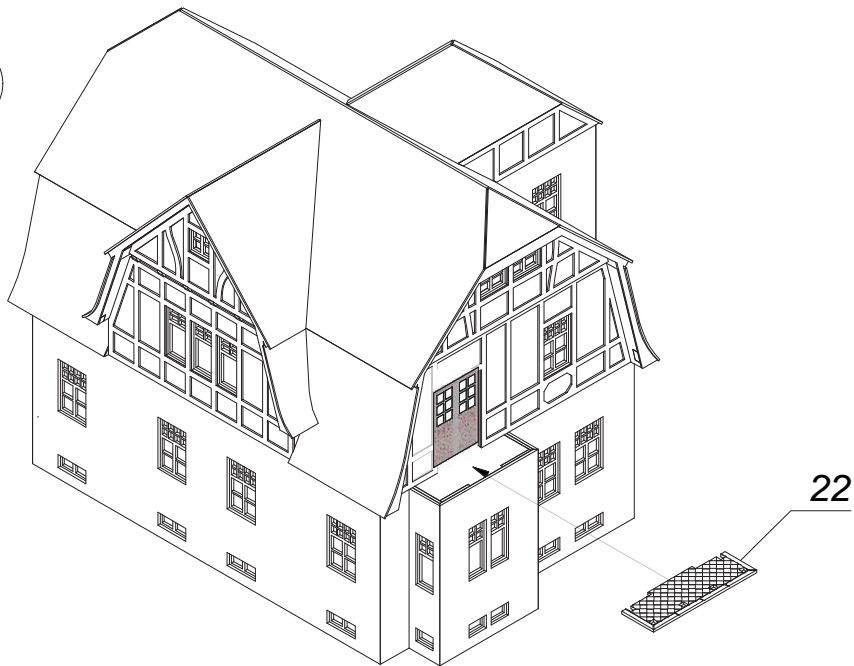
37.

Achtung!  
Balkengravur sichtbar!

-----  
Attention!  
Engraving visible!

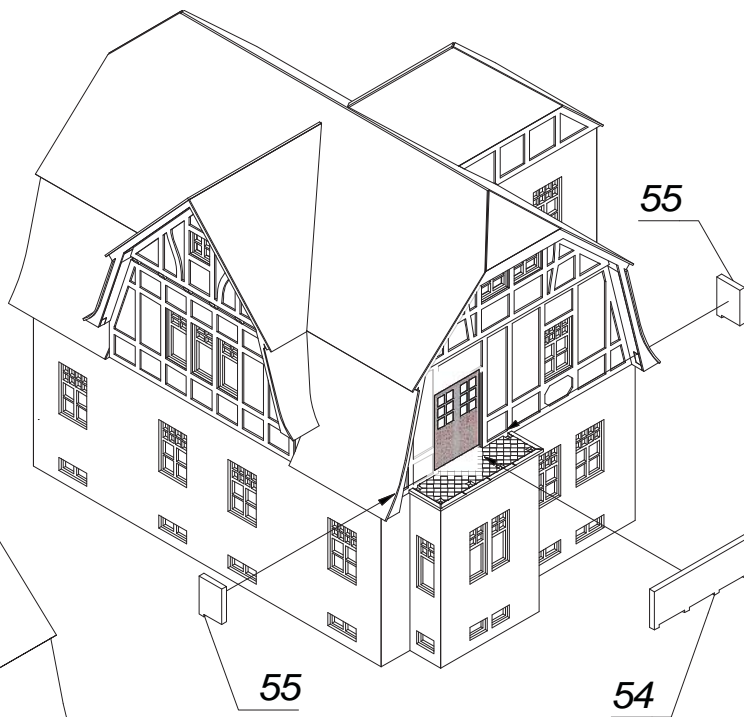


38.

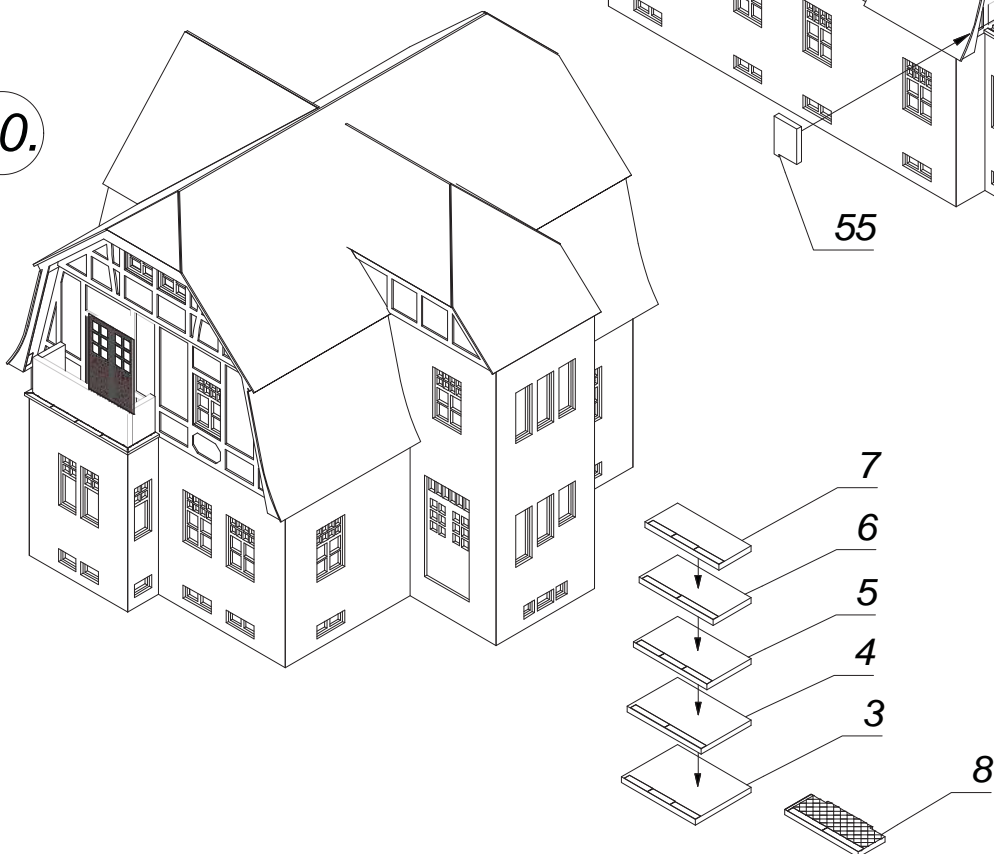


39.

1. Arbeitsschritt: Teil 55 (2x)  
 2. Arbeitsschritt: Teil 54
- 
1. work step: part 55 (2x)  
 2. work step: part 54

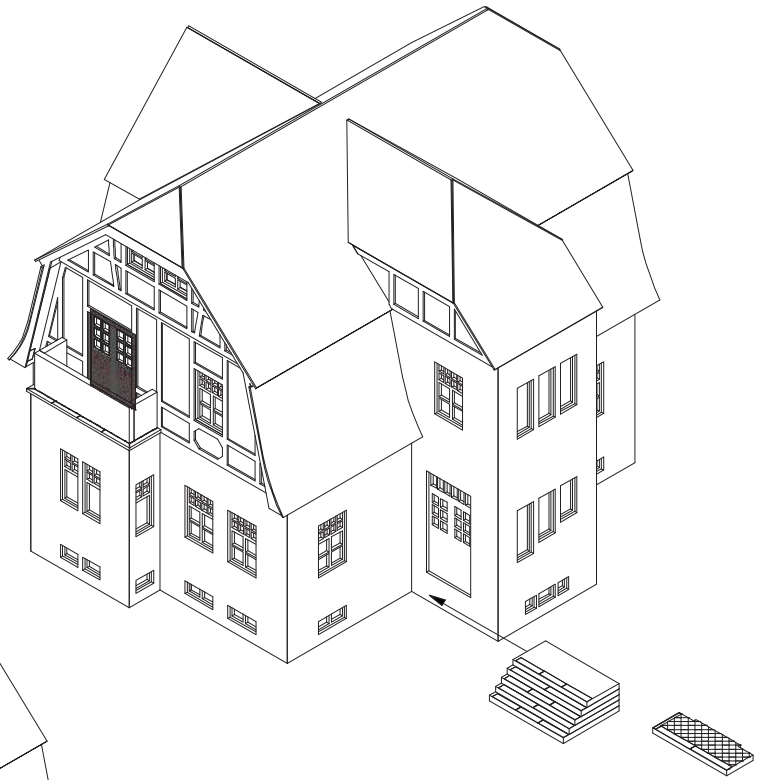


40.

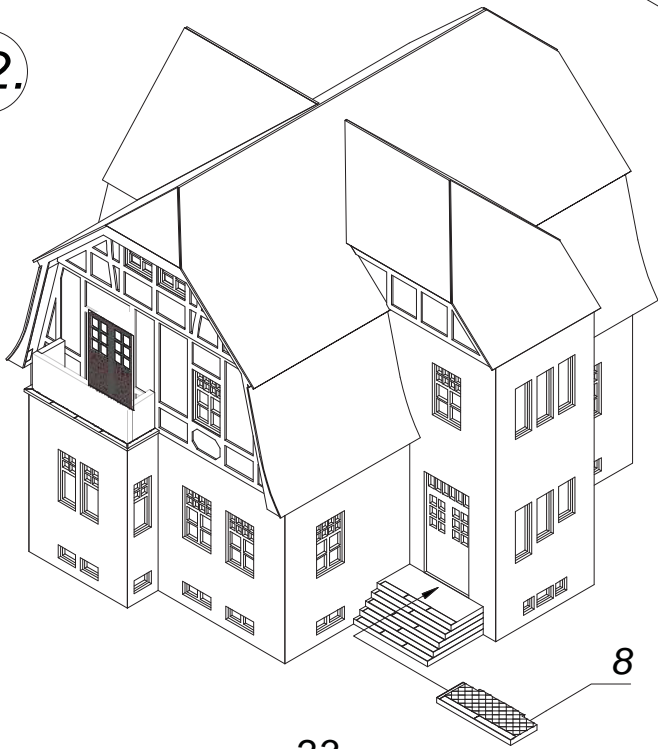




41.



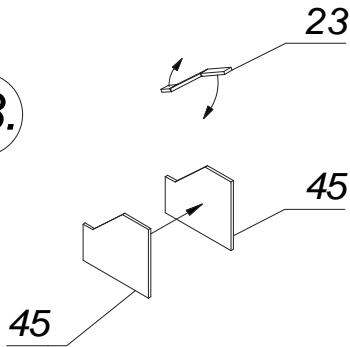
42.



8

23

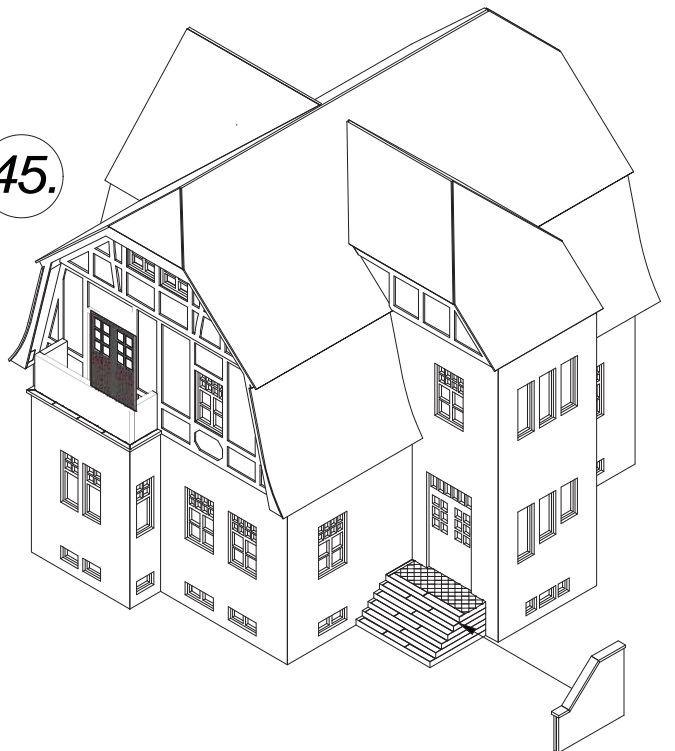
43.



45

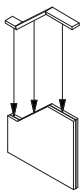
45

45.



44.

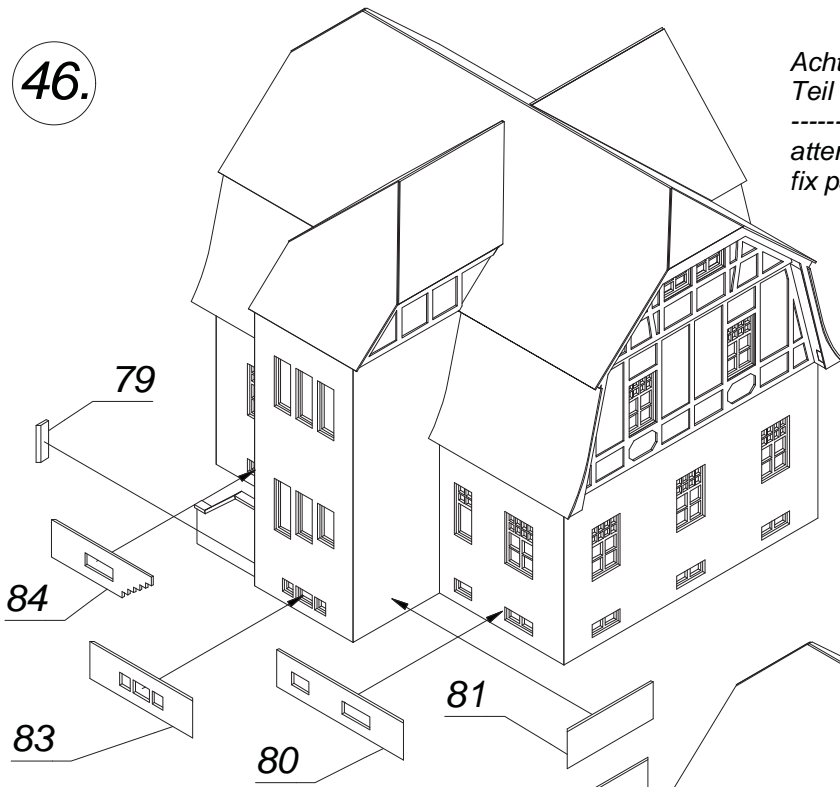
glatte Fläche nach oben!  
 -----  
 plain surface upturned



46.

Achtung!  
Teil 80 vor Teil 81 anbringen

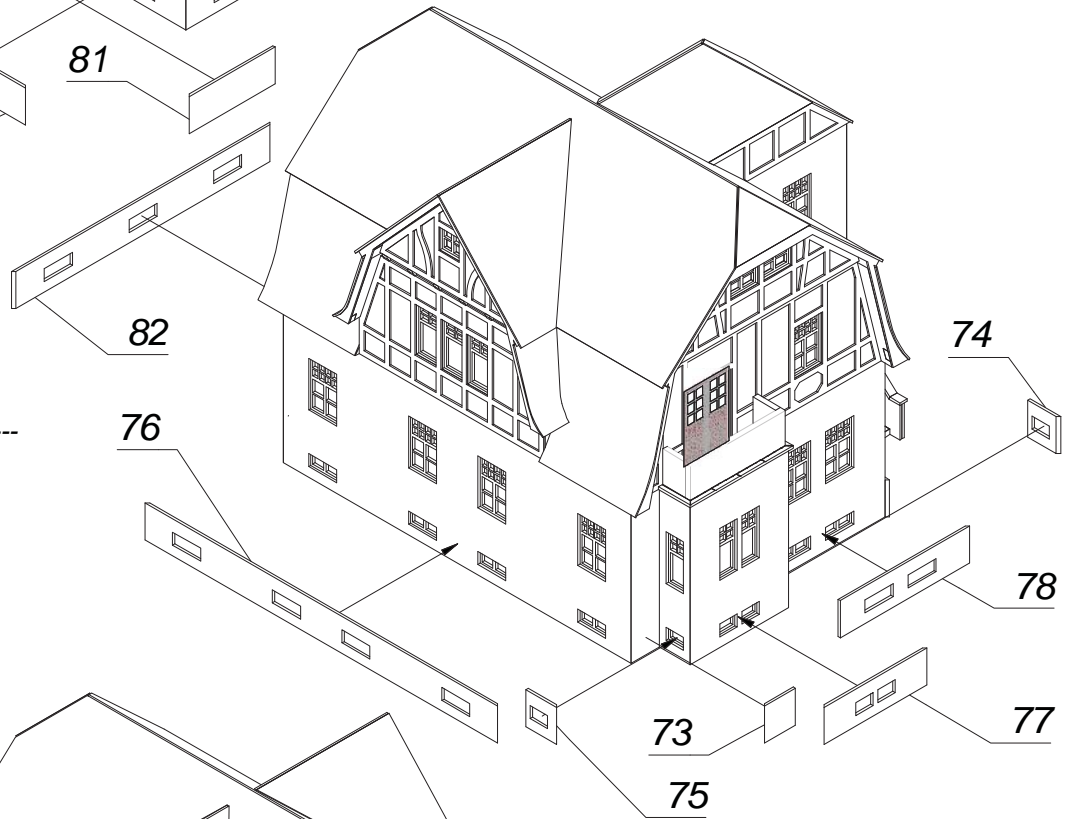
attention!  
fix part 80 before part 81



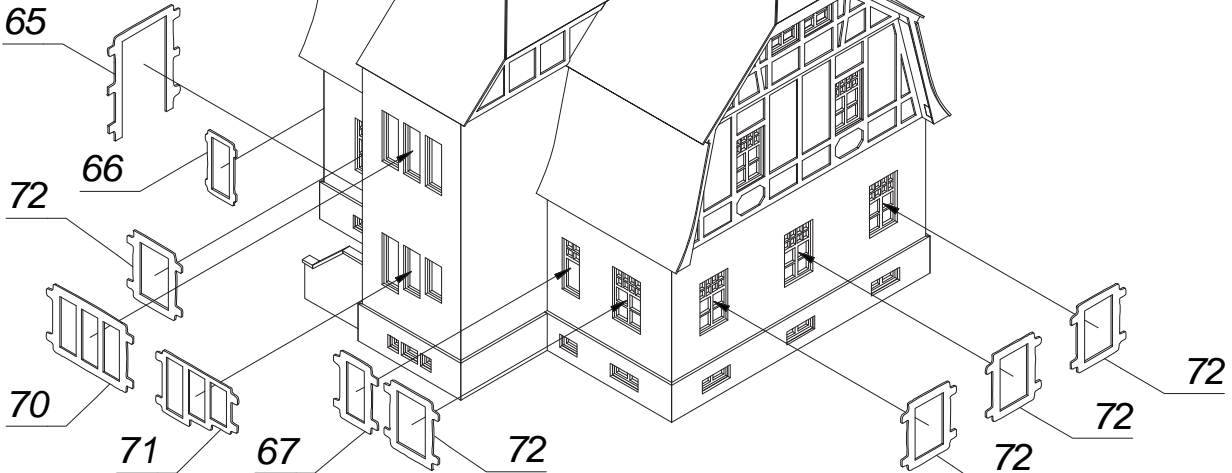
47.

Achtung!  
Teil 78 und Teil 73 vor  
Teil 74 und Teil 75 anbringen

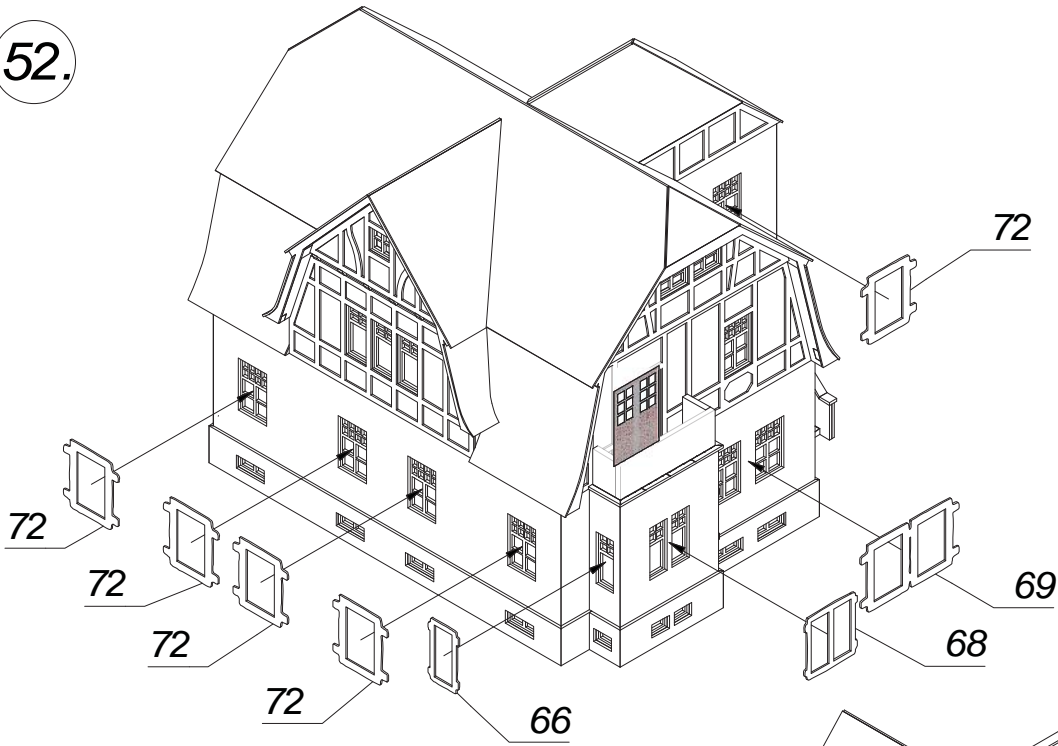
attention!  
fix part 78 and part 73 before  
part 74 and part 75



48.



52.

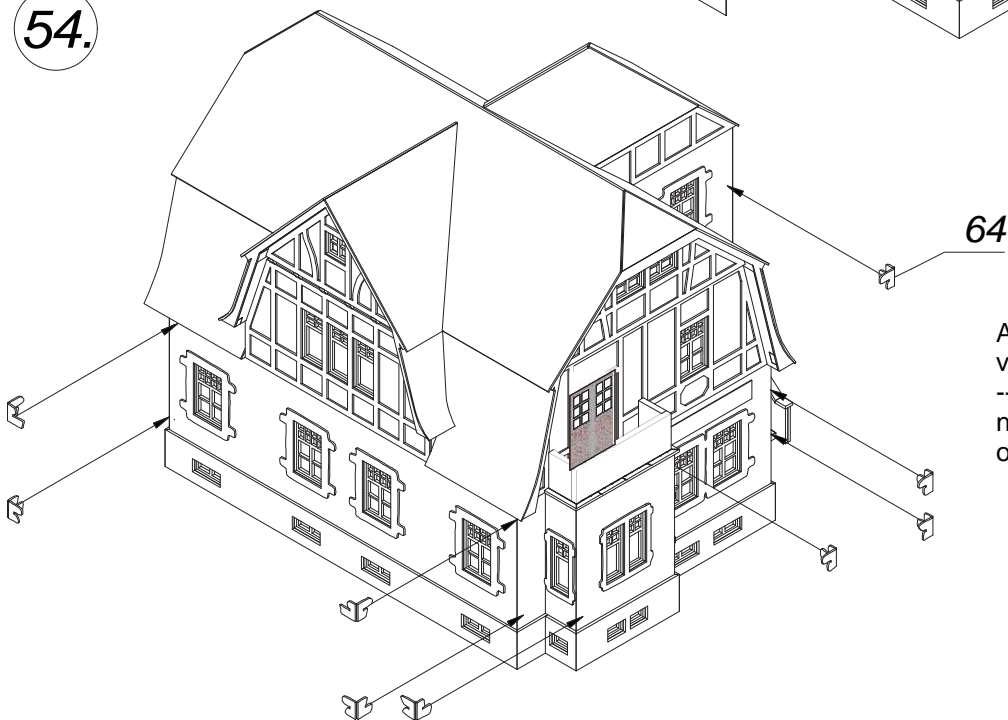


53.

S = Schilder nach Wahl  
 -----  
 label at one`s own choice

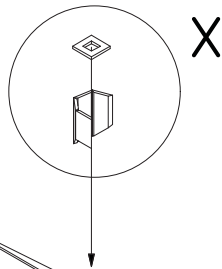


54.

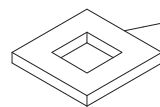


Anzahl und Positionierung  
 von Teil 64 nach Wahl  
 -----  
 number and positioning  
 of part 64 at one`s own choice

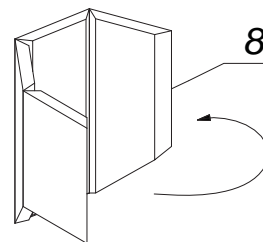
56.



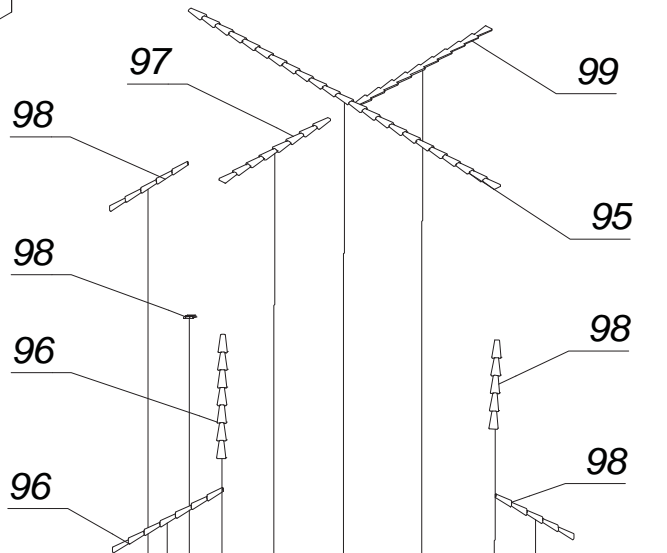
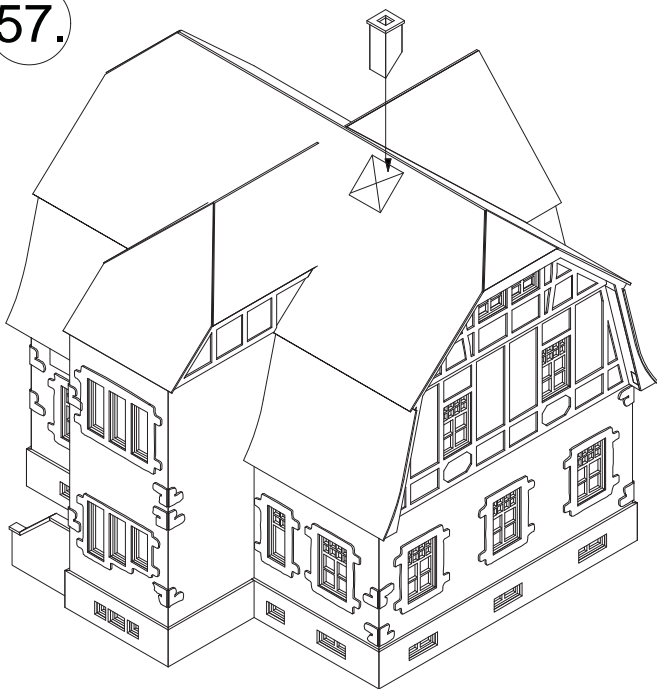
86



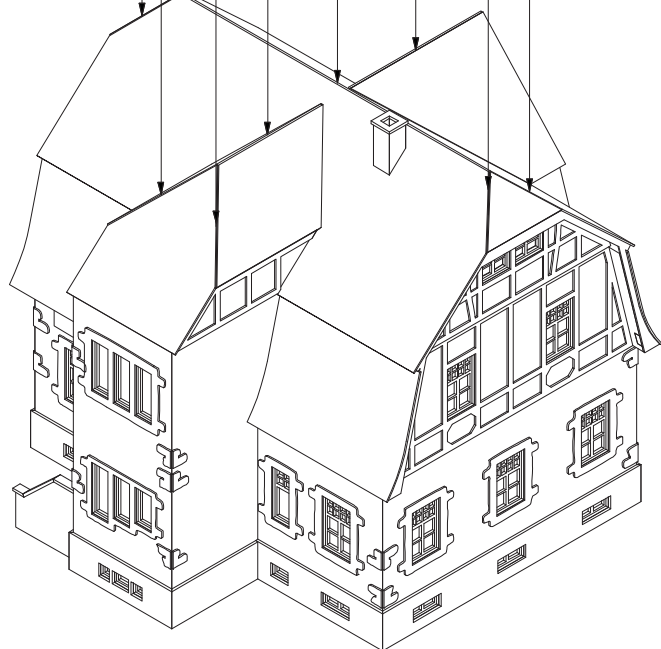
85



57.



58.







*... wie im Original*

## **63712 Weingut „Hauser-Bühler“ - Gesindehaus N**

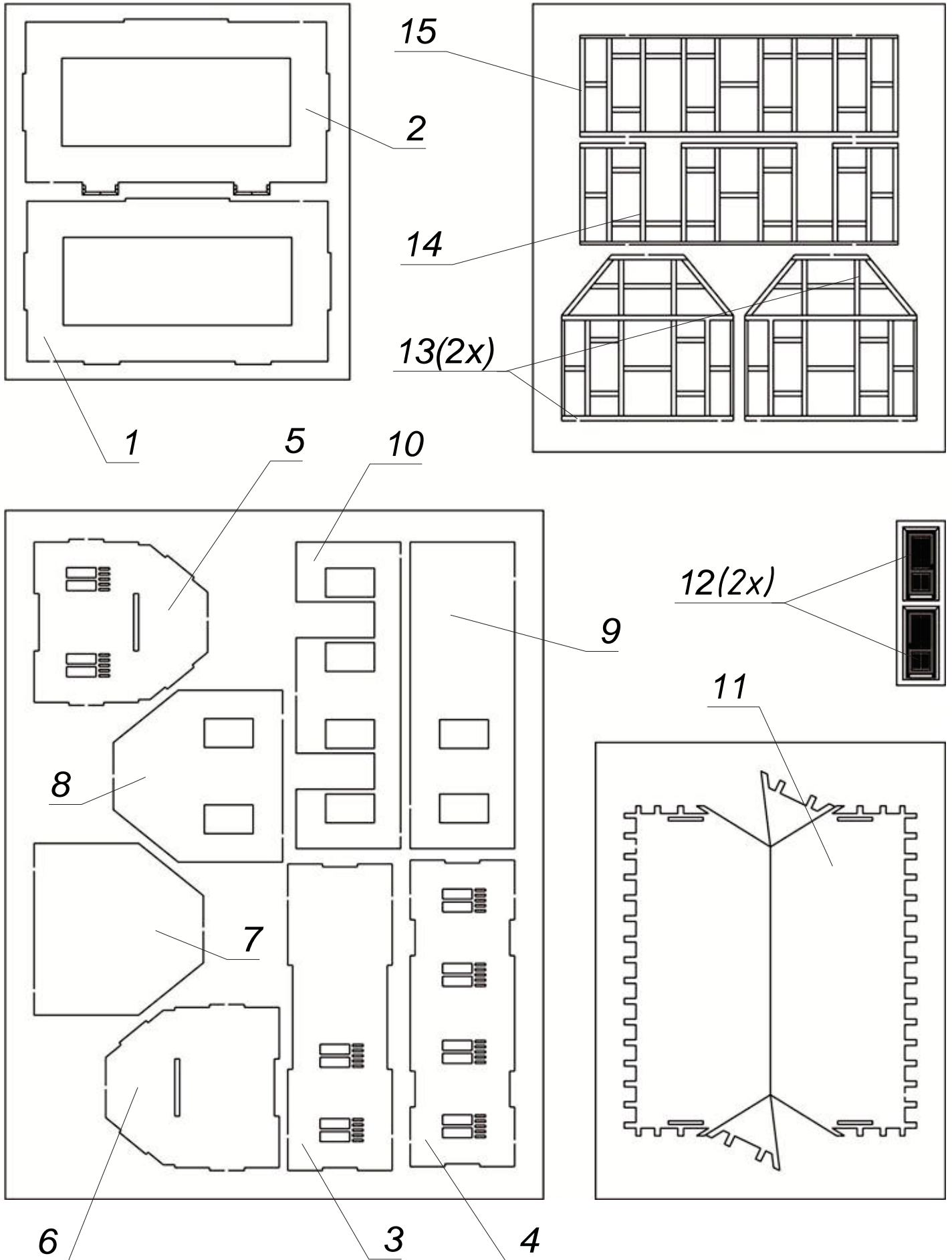
*Winery "Hauser-Bühler" - Servants' House N*

*Domaine viticole "Hauser-Bühler" - Maison des domestiques N*

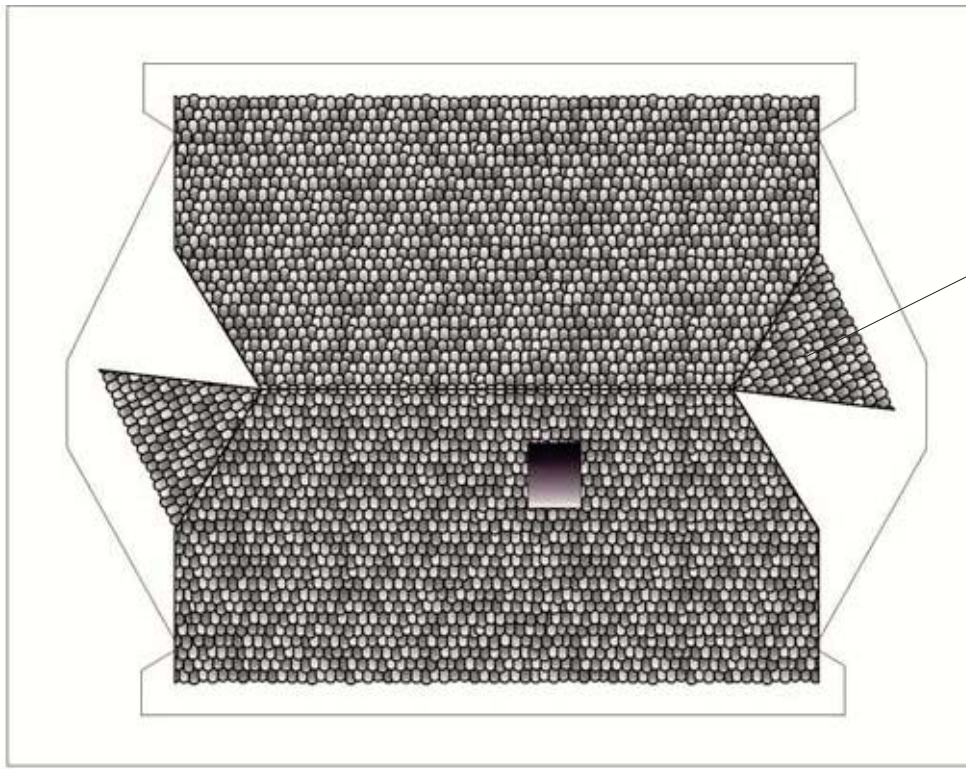
*Propiedad vinícola "Hauser-Bühler" - Casa en empleados N*

*Wijnhuis "Hauser-Bühler" - Personeelshuis N*

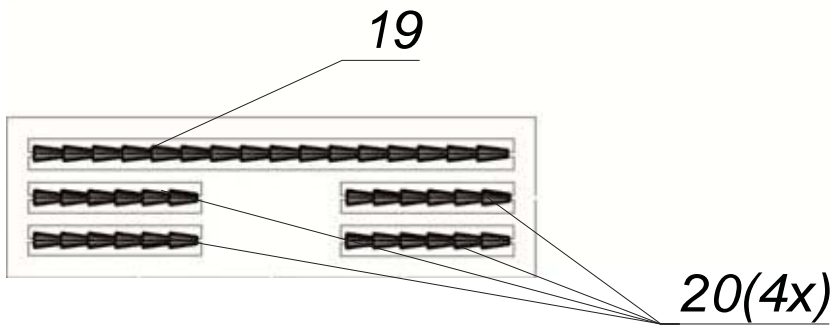






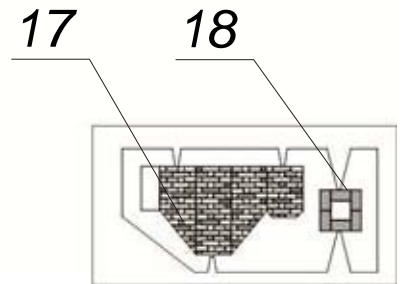


16



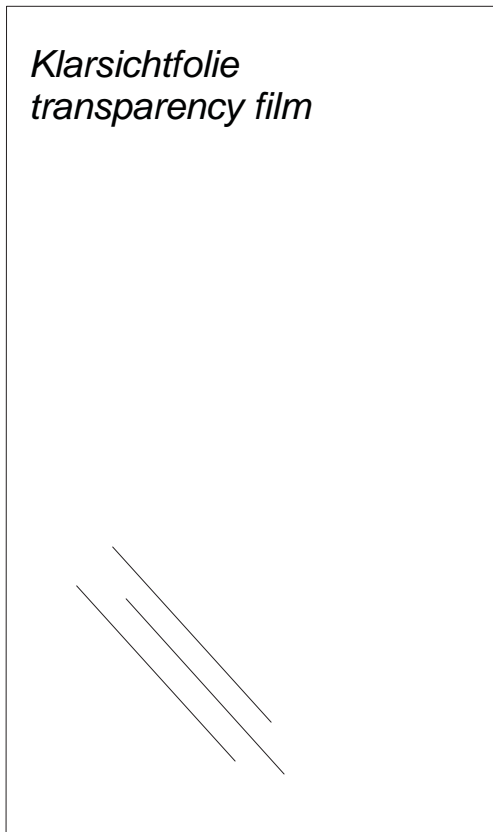
19

20(4x)



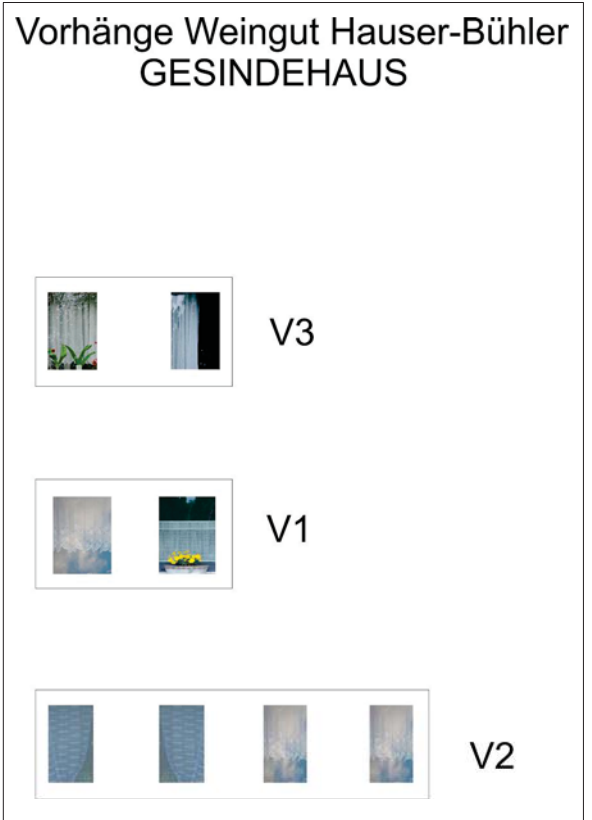
17

18



Klarsichtfolie  
transparency film

G



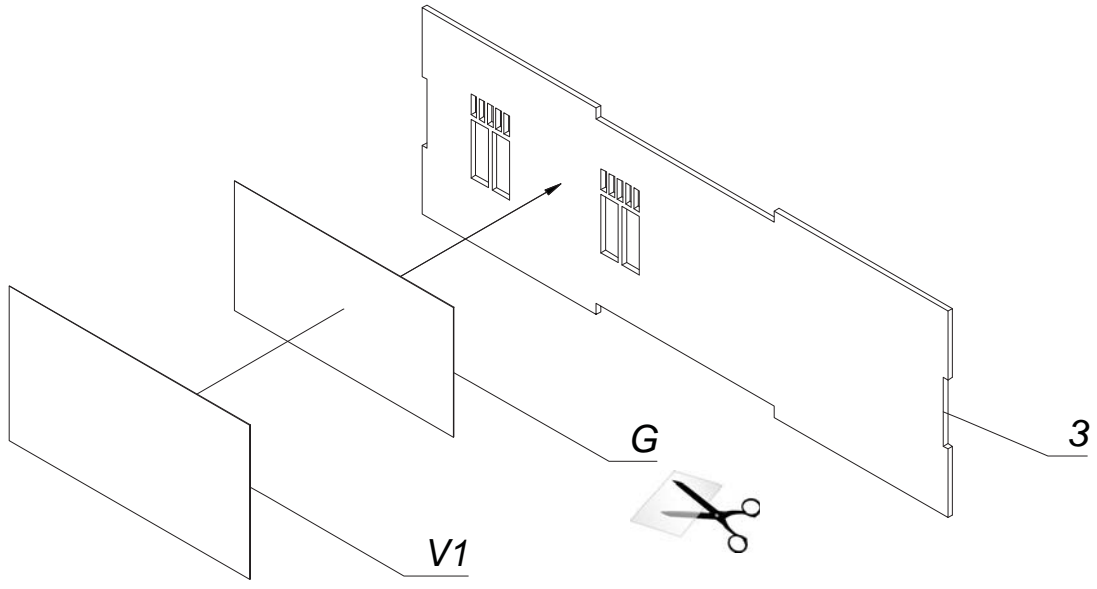
Vorhänge Weingut Hauser-Bühler  
GESINDEHAUS

V3

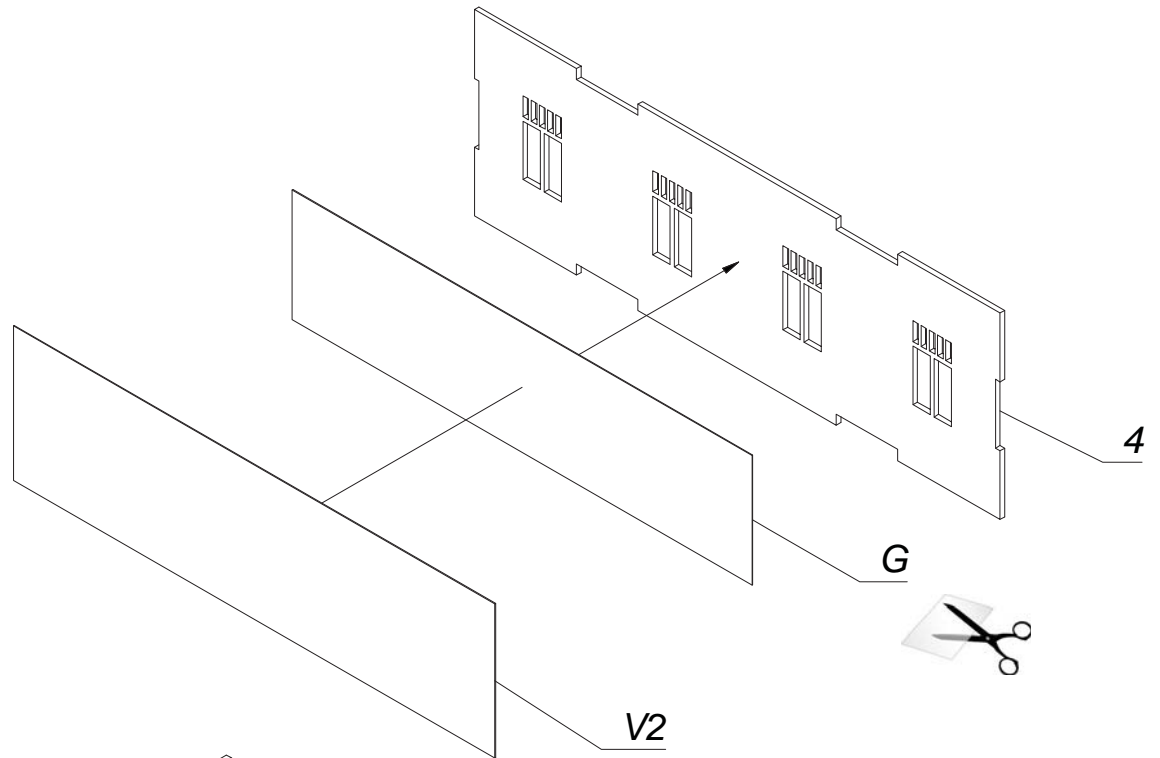
V1

V2

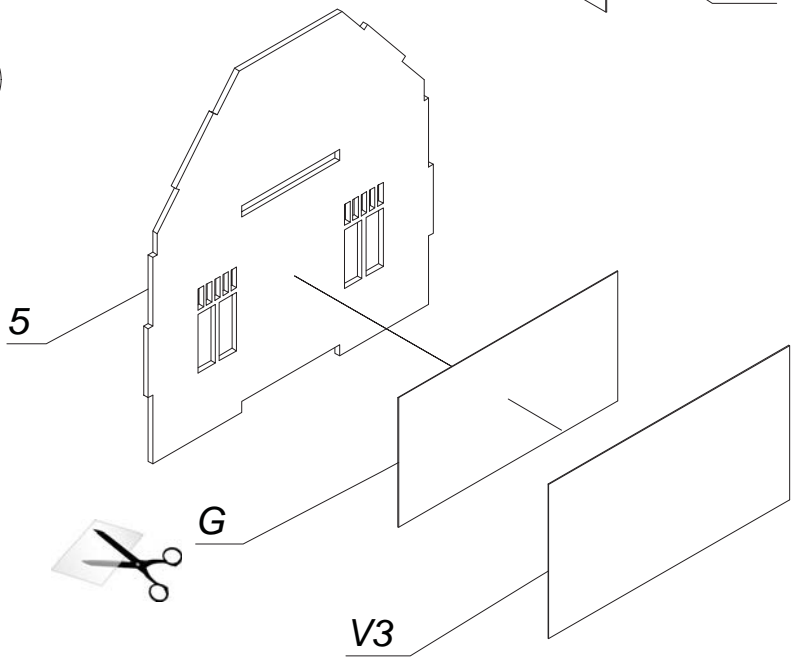
1.



2.

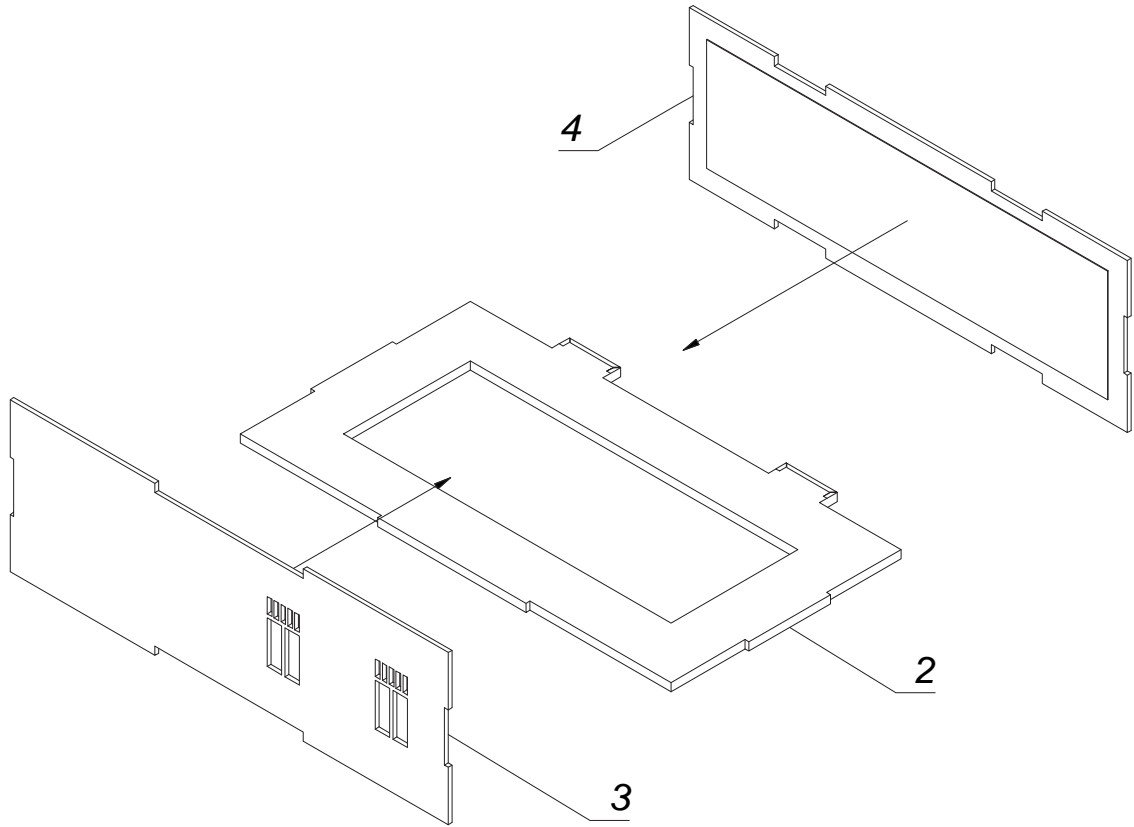


3.

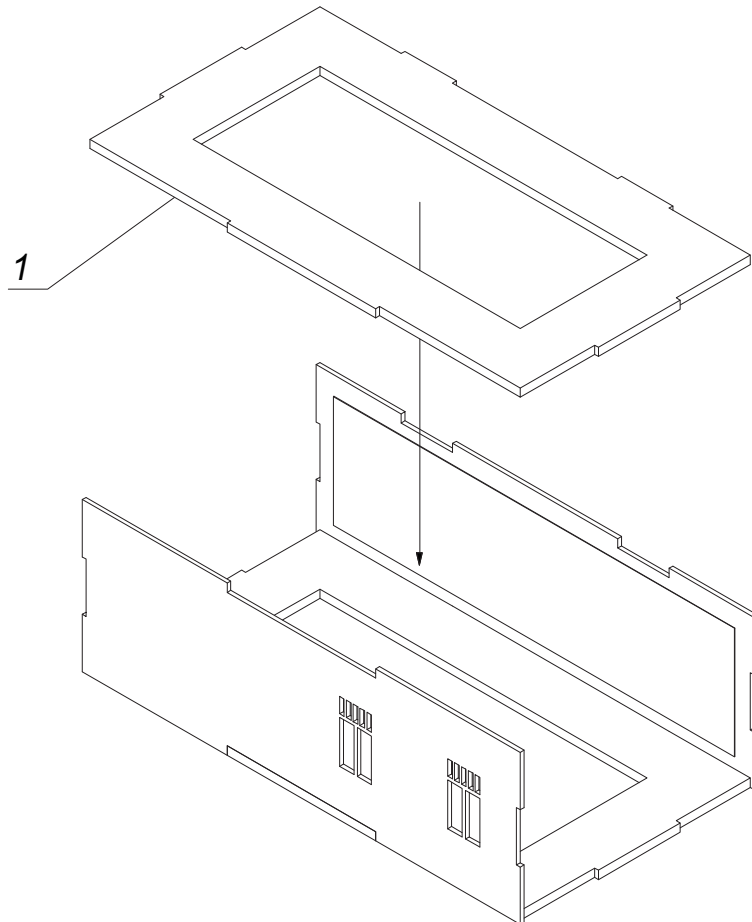




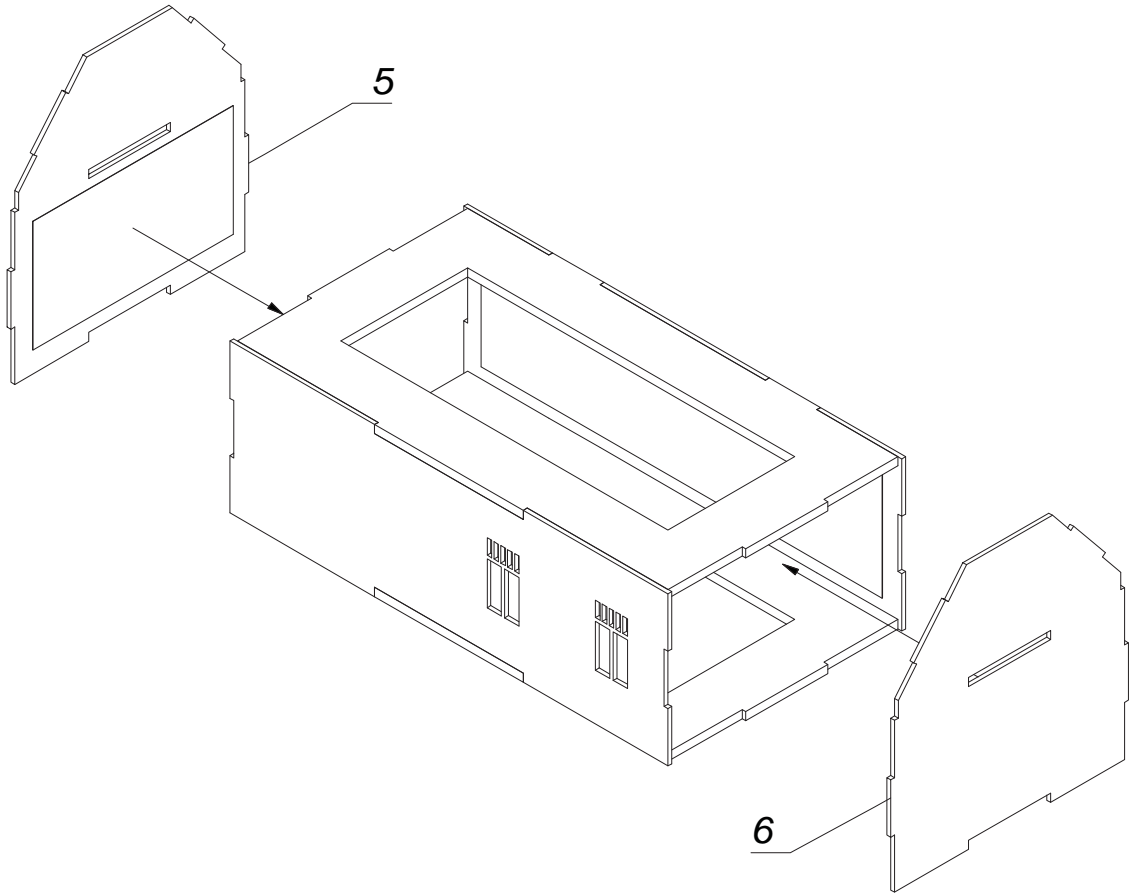
4.



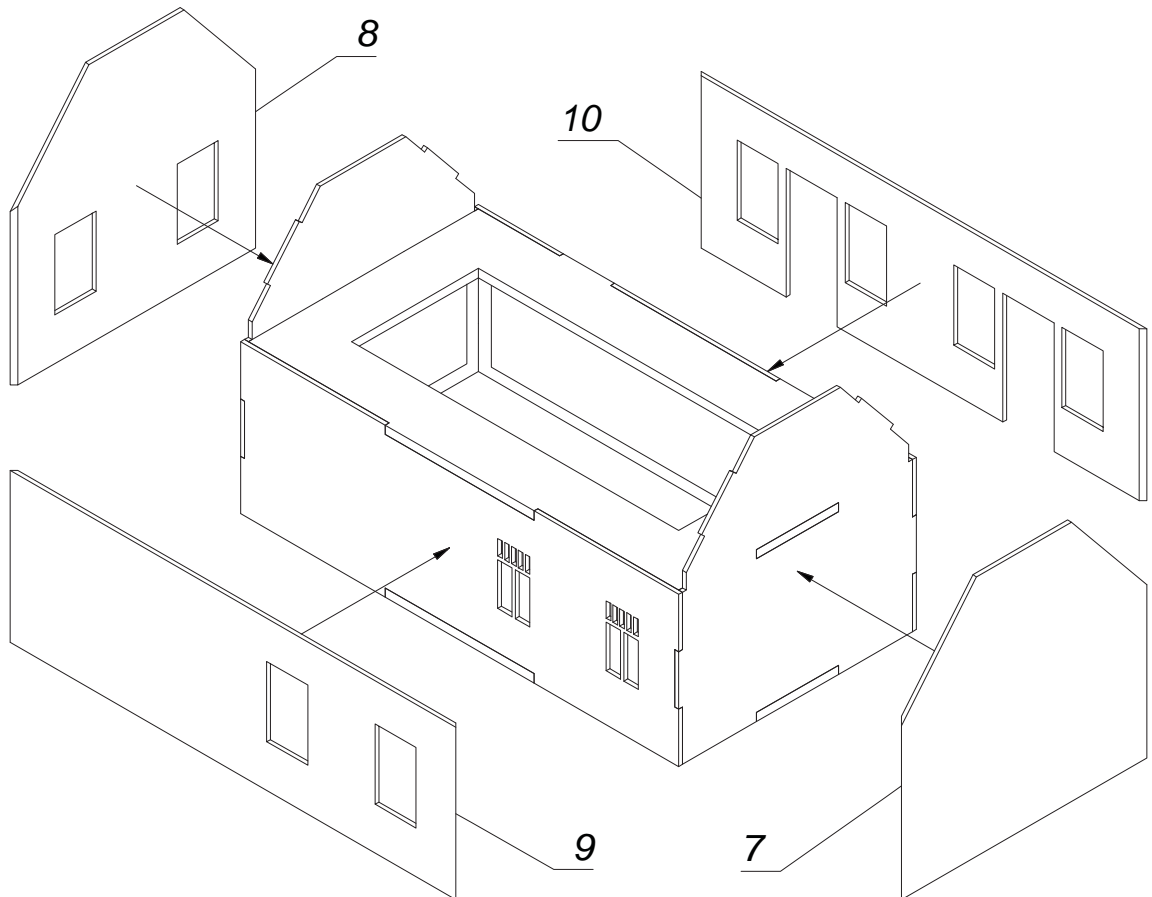
5.



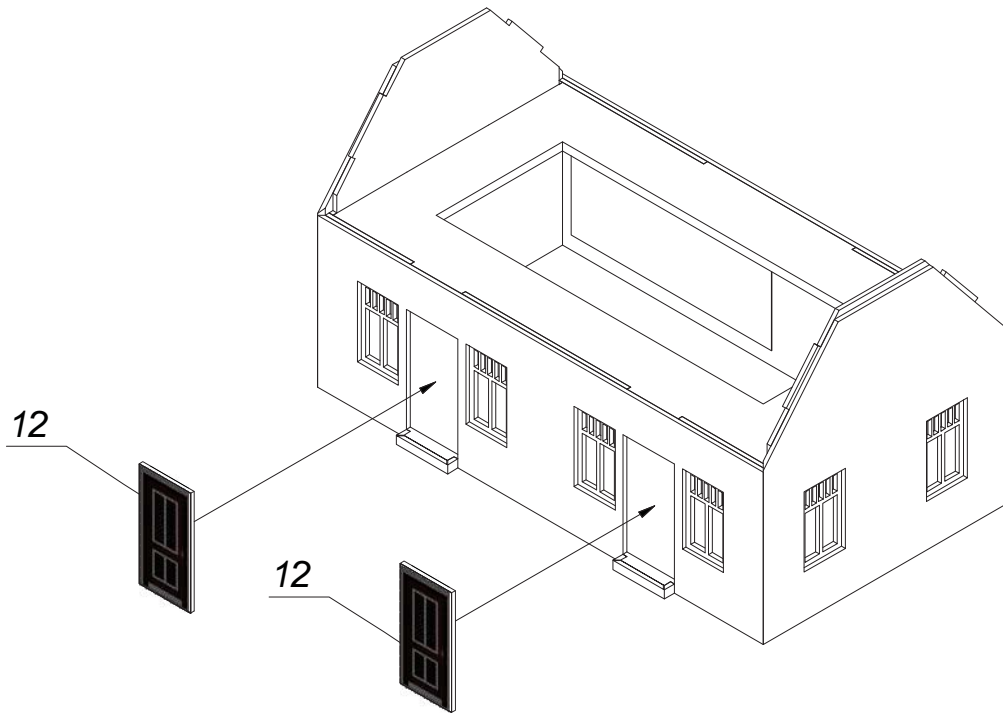
6.



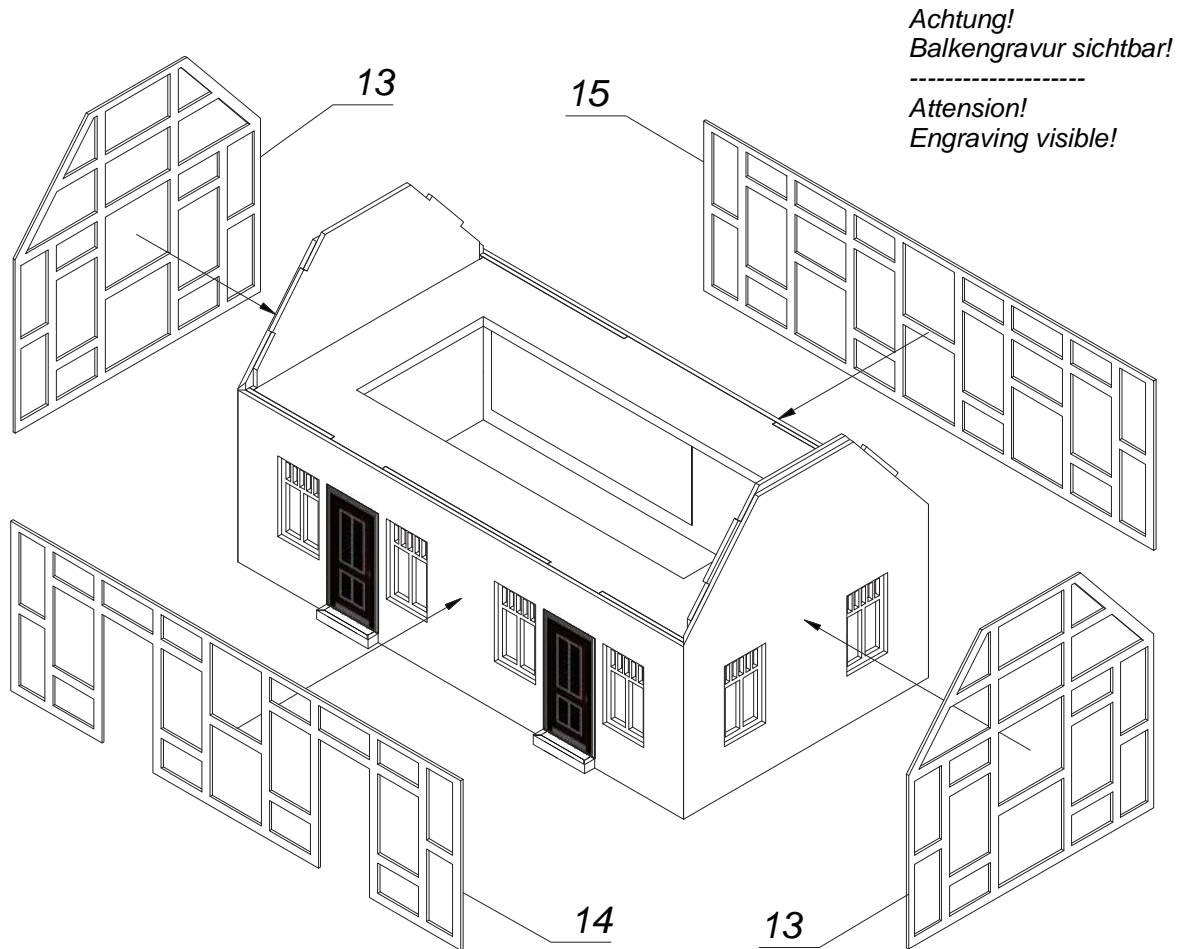
7.



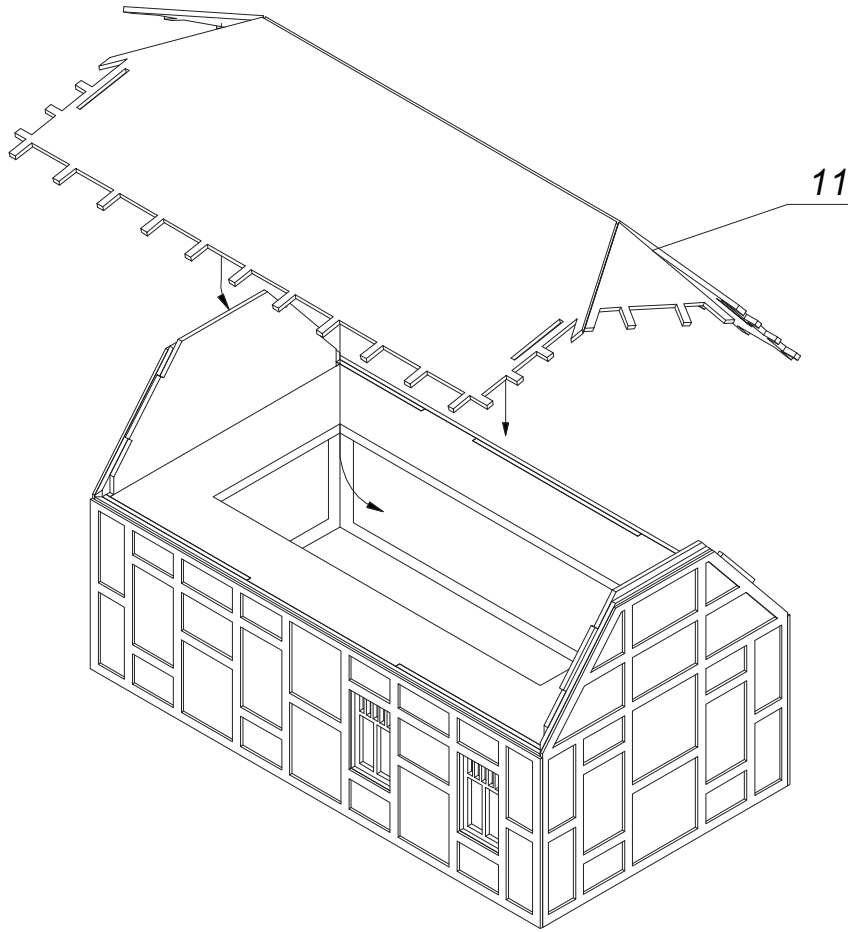
8.



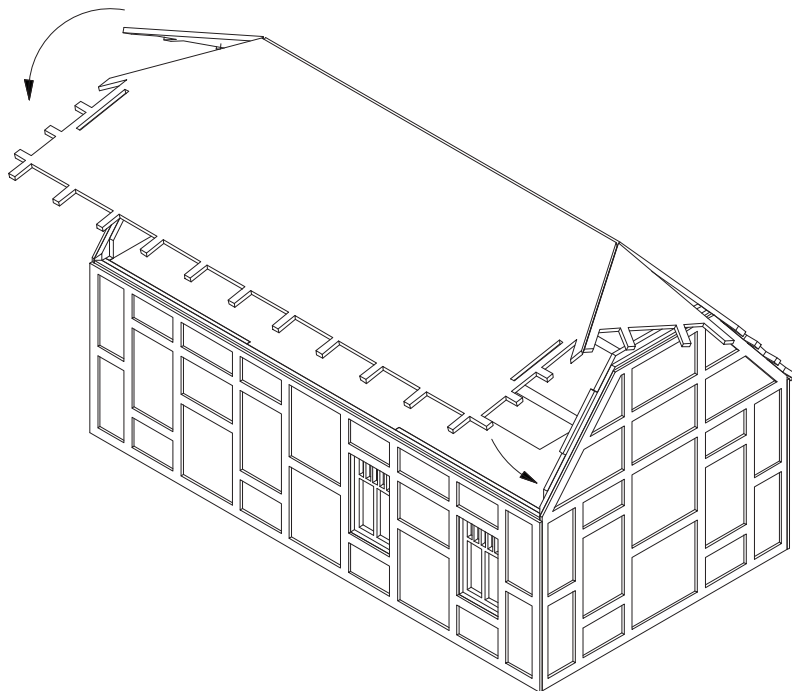
9.



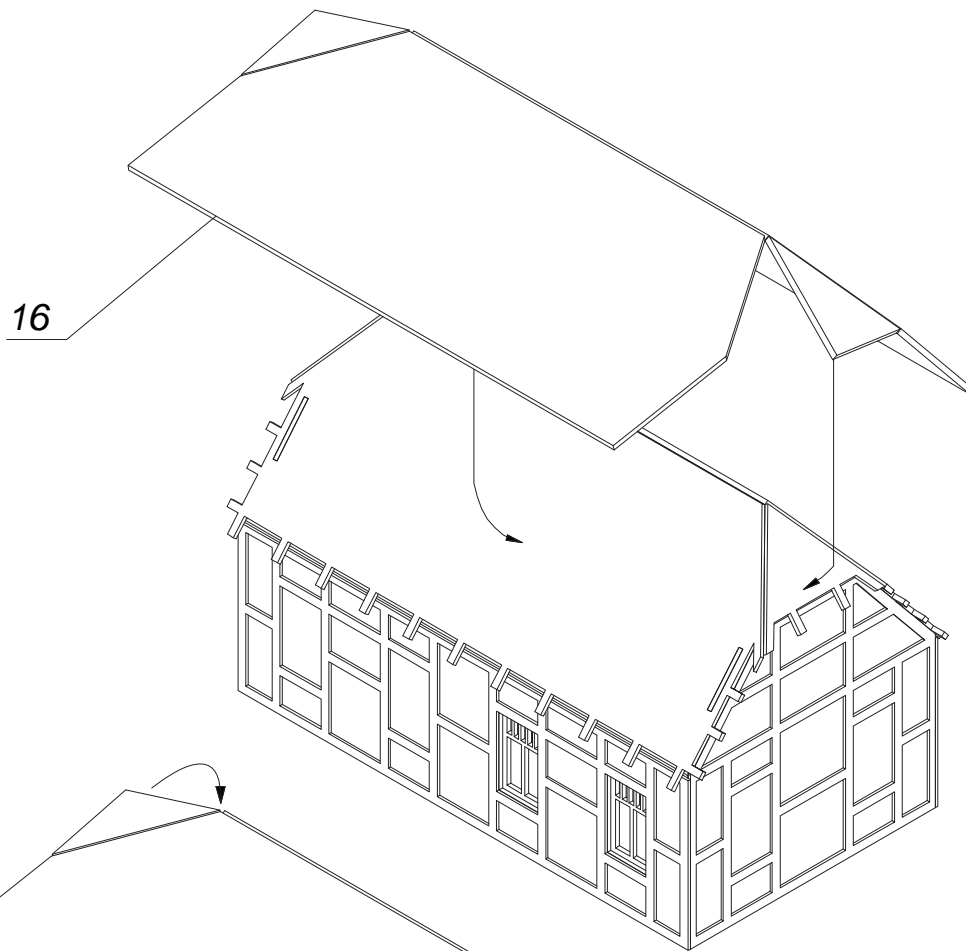
10.



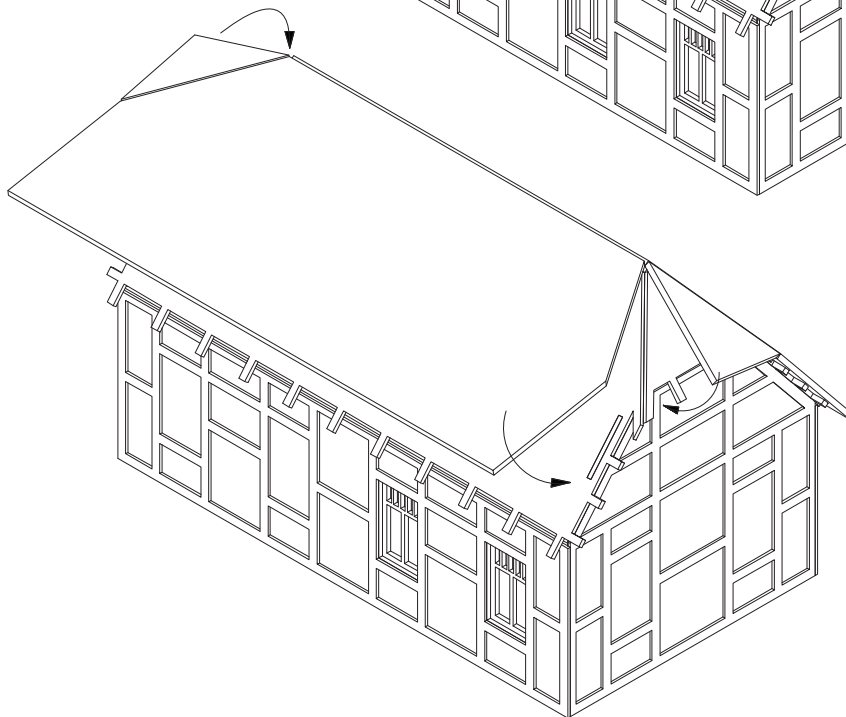
11.



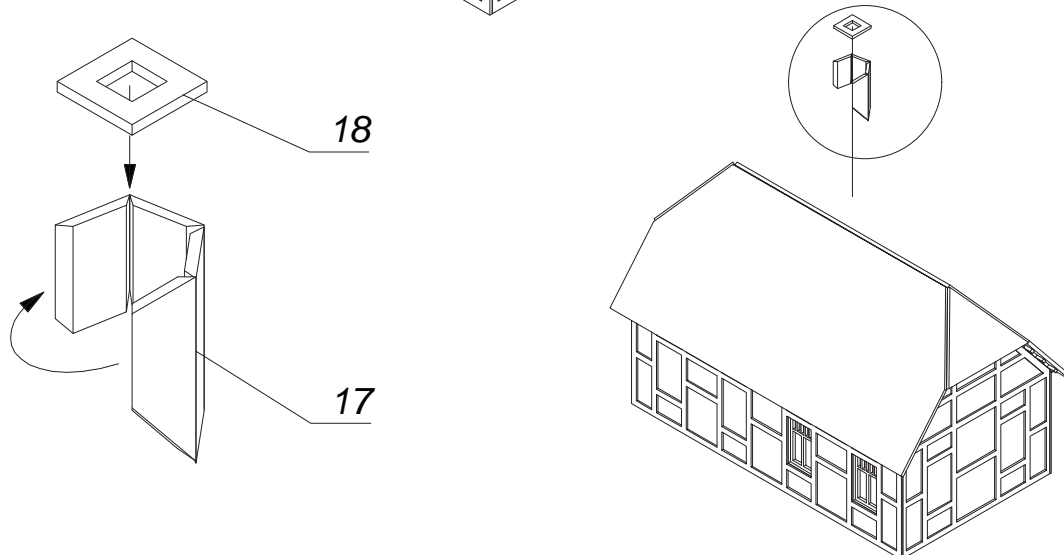
12.



13.

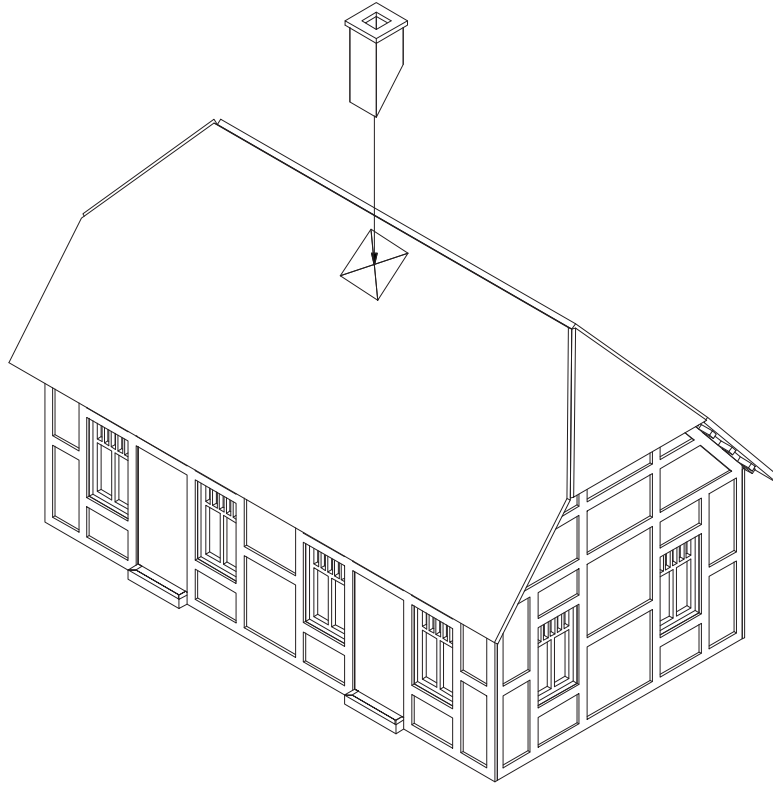


14.

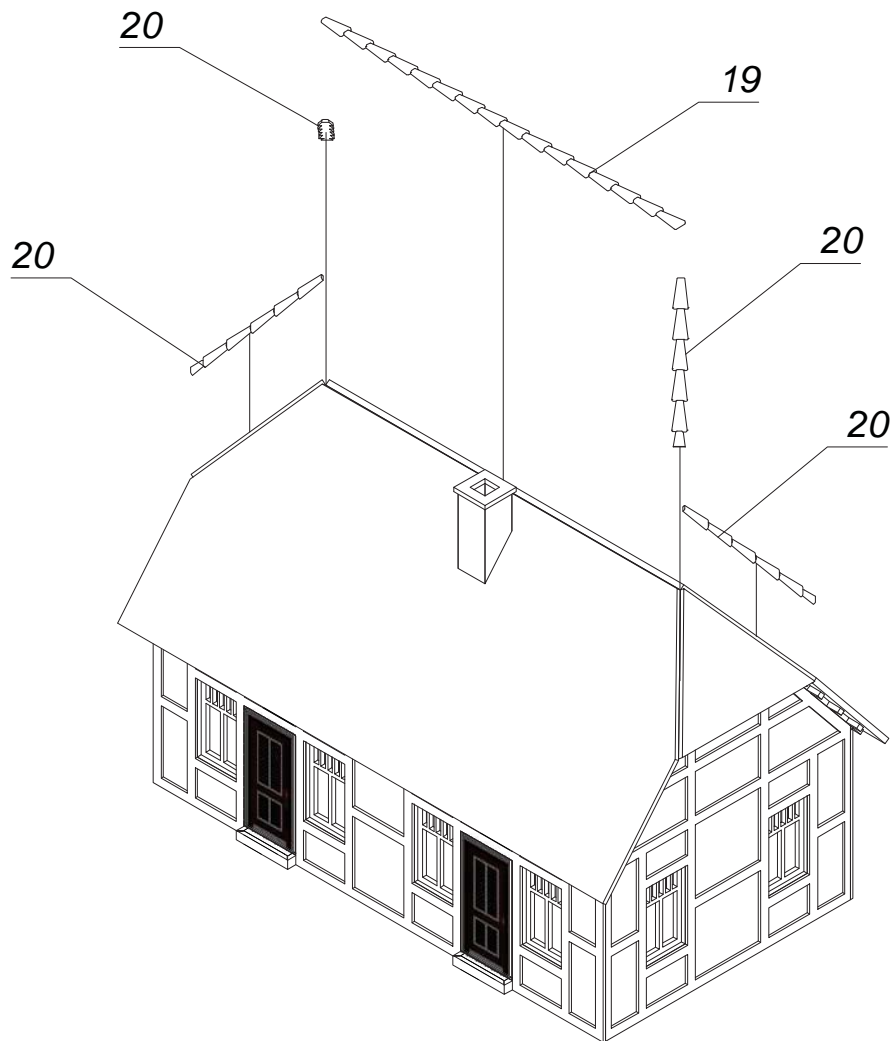




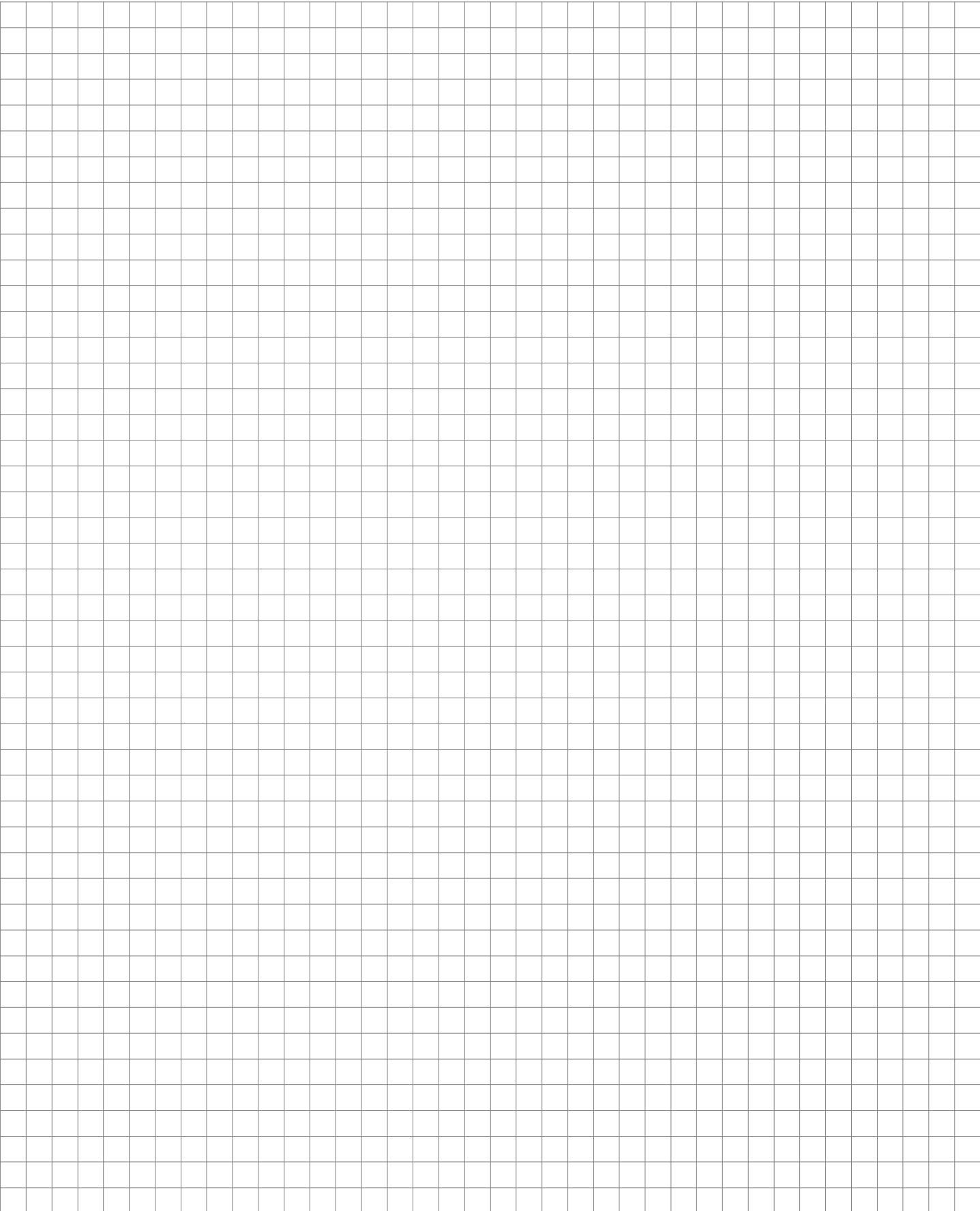
15.



16.



**Platz für Ihre Notizen:**  
**Space for your notes:**





*... wie im Original*

**Ebenfalls erhältlich / Also available:**



**N** 63600 Laser-Cut Bausatz Wohnhaus  
Laser-Cut Kit Residential House



**N** 63406 Laser-Cut Bausatz Werkstatt  
Laser-Cut Kit Workshop